

**STANDARD ARRIVAL CHART
INSTRUMENT (STAR) - ICAO**

APP	123.6
	235.32
	121.5
TWR	119.05
SMC	121.6
ATIS	126.65

**KUALA TERENGGANU/
SULTAN MAHMUD (WMKN)**

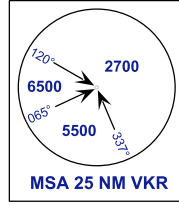
VOR/DME ARC RWY 04
PALNO 1G GUNBO 1G

BANK ANGLE : 25° OR 3°/SEC

TRANSITION ALTITUDE
11 000 FT

ELEV, ALT, HGT IN FT
DIST IN NM
BRG ARE MAG
VAR 0°W

WMR 107
7000 FT ALT
GND



TERENGGANU
VOR/DME 112.9
VKR
CH 76X

CTR
KUALA
TERENGGANU
10 000
SEA/GND

