

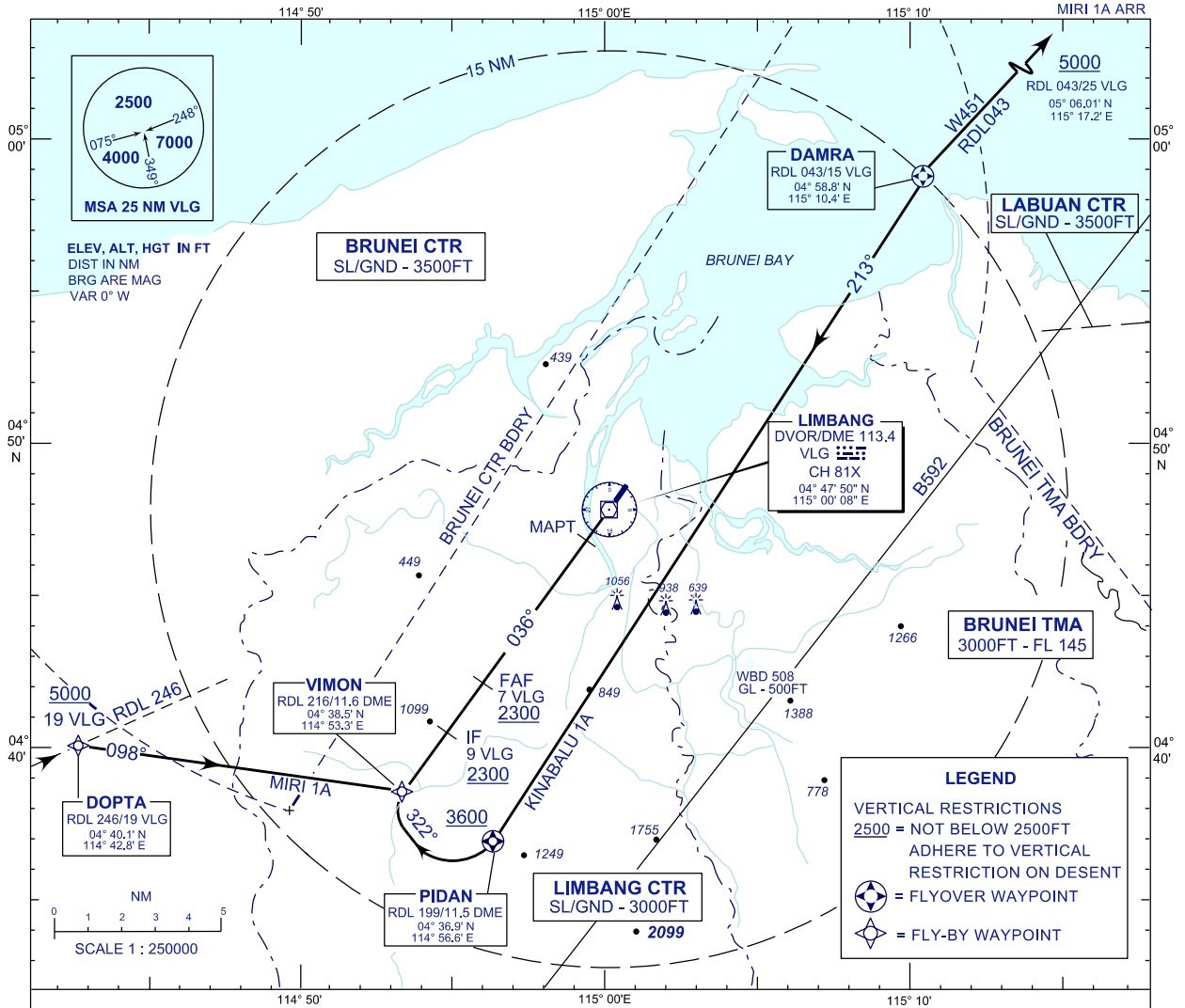
**STANDARD ARRIVAL CHART  
INSTRUMENT (STAR) - ICAO**

TRANSITION ALTITUDE  
11000FT

TWR 124.30  
SMC 121.95  
EMERG 121.50

**LIMBANG/LIMBANG(WBGJ)  
RWY 04  
RNAV TRACKING**

KINABALU 1A ARR  
MIRI 1A ARR



**RWY 04**

**KINABALU ONE ALPHA ARRIVAL**

FROM DAMRA RDL 043/15 DME VLG VOR INBOUND

- \* TRACK 213° TO PIDAN
- \* AT PIDAN TURN RIGHT TRACK 322° TO VIMON
- \* TO INTERCEPT RDL 216 FOR VOR/DME APPROACH

**MIRI ONE ALPHA ARRIVAL**

FROM DOPTA RDL 246/19 DME VLG VOR INBOUND

- \* TRACK 098° TO VIMON,
- \* To INTERCEPT RDL 216 FOR VOR/DME APPROACH

**CHANGES : FREQ 118.500 (SRY) PERMANENTLY WITHDRAWN**