

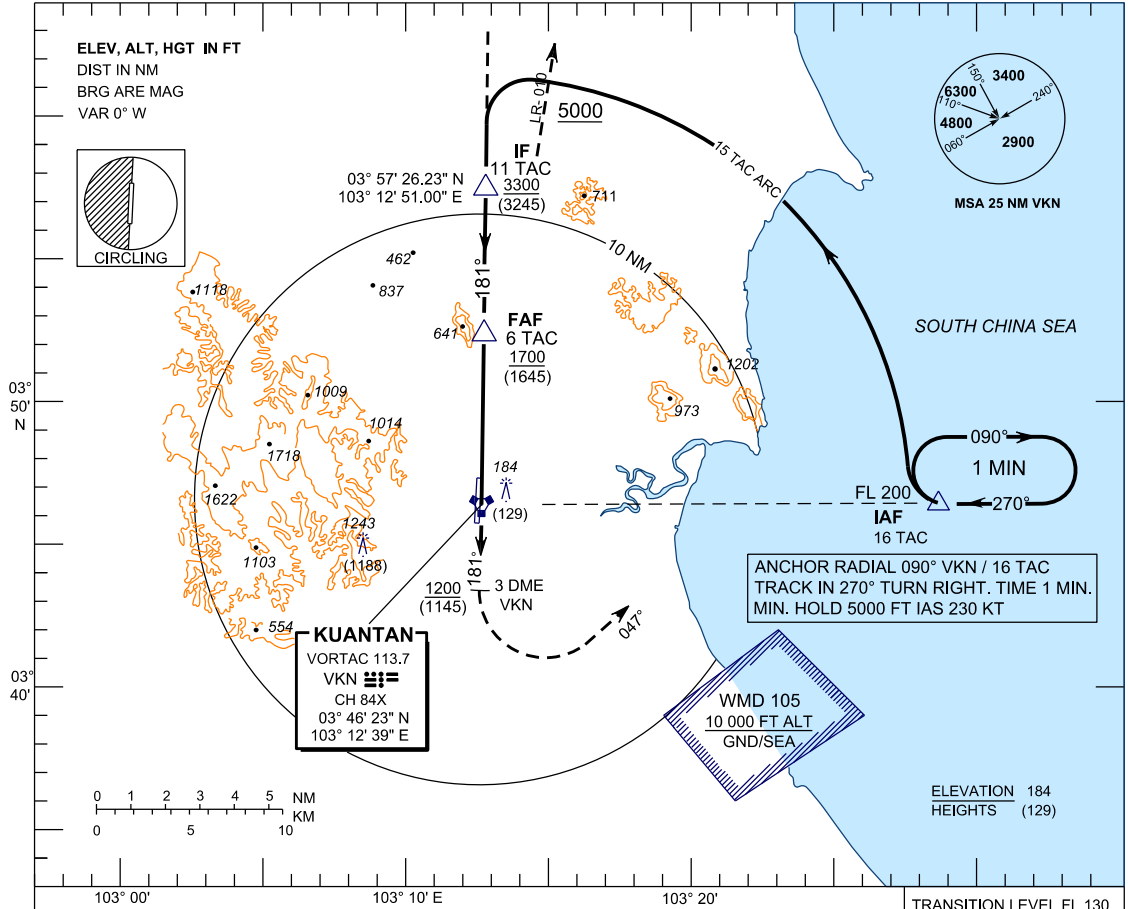
INSTRUMENT APPROACH CHART - ICAO

AERODROME ELEV. 55 FT
HEIGHT RELATED TO
THR RWY 18 - ELEV 55 FT

TWR 118.1, 238.1
GND 263.9, 120.4
APP 119.7, 121.5
ATIS 127.5, 253.8
SRA 261.6, 118.7

KUANTAN/SULTAN AHMAD SHAH (WMKD) RWY 18

TACAN 1 (HI / LO)



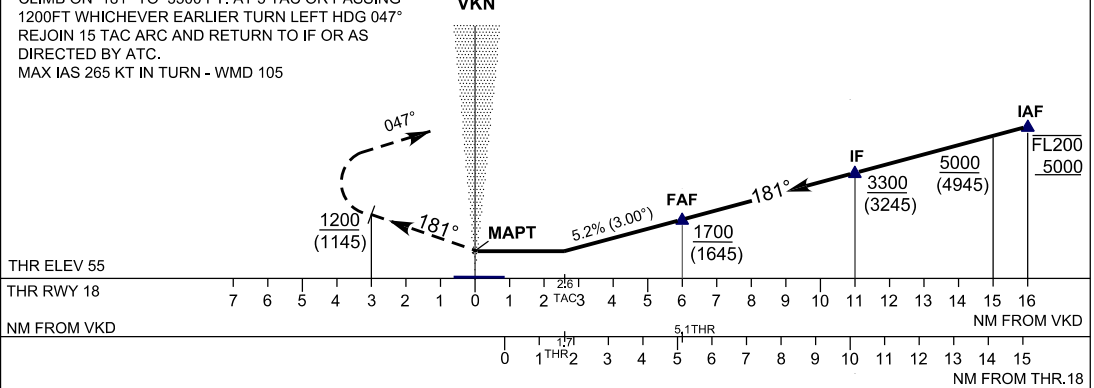
MISSED APPROACH

CLIMB ON 181° TO 3300 FT. AT 3 TAC OR PASSING 1200FT WHICHEVER EARLIER TURN LEFT HDG 047° REJOIN 15 TAC ARC AND RETURN TO IF OR AS DIRECTED BY ATC.
MAX IAS 265 KT IN TURN - WMD 105

VORTAC VKN

USE QNH

TRANSITION LEVEL FL 130
TRANSITION ALT 11000



THR ELEV 55
THR RWY 18

NM FROM VKD

NM FROM VKD

NM FROM THR.18

AIRCRAFT CATEGORY	OCA(OCH)			
	A	B	C	D
STRAIGHT - IN - APPROACH	660 (605) / 2.6 TAC			
CIRLING & MIN VISIBILITY - KM (NM)	600(545)	900(845)	1100(1045)	
	1.9(1.0)	2.8(1.5)	3.7(2.0)	4.6(2.5)

CAUTION : CIRLING IS NOT AUTHORISED WEST OF RUNWAY 18/36

DME DISTANCE	6	5	4	3	2.6
ALTITUDE	2600	2287	1968	1650	1332

	90	120	150
GROUN SPEED (KT)			
MINUTES : SECONDS	3:20	2:30	2:00
5.2% DESCENT (FT/MIN)	480	640	800

	180	210	240
GROUN SPEED (KT)			
MINUTES : SECONDS	1:40	1:26	1:15
5.2% DESCENT (FT/MIN)	1000	1115	1275