

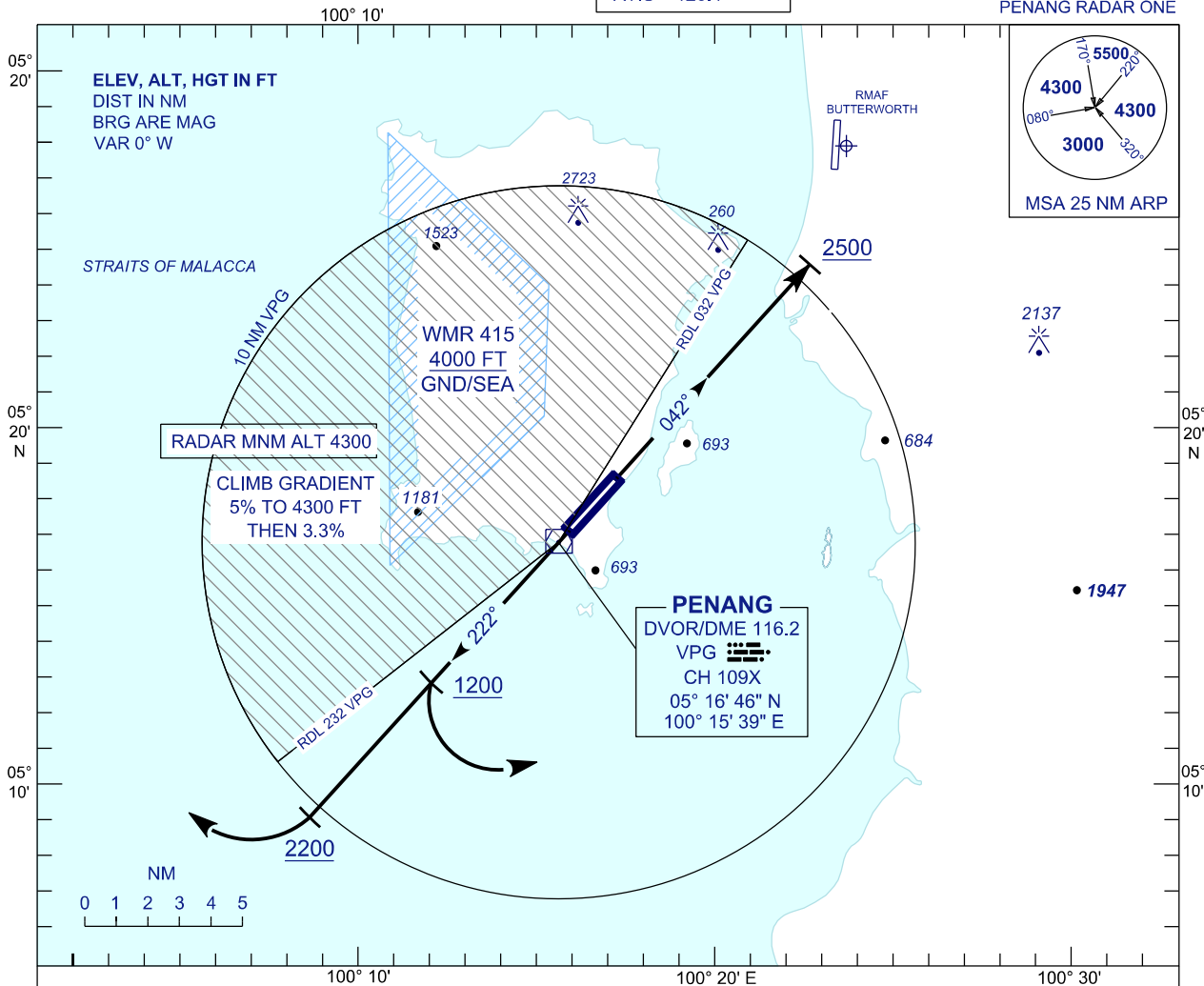
**STANDARD DEPARTURE CHART
INSTRUMENT (SID) - ICAO**

TRANSITION ALTITUDE
11000FT

APP 125.925
TWR 121.1
SMC 121.6, 121.9
ATIS 126.4

**PENANG / PENANG
INTERNATIONAL AIRPORT (WMKP)
RWY 04/22**

PENANG RADAR ONE



**STANDARD RADAR DEPARTURE
PENANG RADAR ONE**

RWY 22 - EASTERLY DEPARTURE

AFTER TAKE-OFF PROCEED ON RUNWAY HEADING (TRACK 222°) UNTIL PASSING 1200 FT OR ABOVE, THEN FOLLOW THE ASSIGNED HEADING.
CONTACT BUTTERWORTH APPROACH WHEN AIRBORNE.

RWY 22 - WESTERLY DEPARTURE

AFTER TAKE-OFF PROCEED ON RUNWAY HEADING (TRACK 222°) UNTIL PASSING 2200 FT OR ABOVE, THEN FOLLOW THE ASSIGNED HEADING.
CONTACT BUTERWORTH APPROACH WHEN AIRBORNE.

NOTE: ATC WILL ISSUE THE ASSIGNED HEADING BEFORE DEPARTURE

**RWY 04
PDG 5%**

AFTER TAKE-OFF PROCEED ON RUNWAY HEADING (TRACK 042°) UNTIL PASSING 2500 FT OR ABOVE, THEN FOLLOW THE ASSIGNED HEADING.
CONTACT BUTTERWORTH APPROACH WHEN AIRBORNE.

COMMUNICATION FAILURE:

- * SQUAWK 7600
- * MAINTAIN ASSIGNED HEADING - CLIMB TO MSA OR AT LEAST LAST ASSIGNED LEVEL (IF HIGHER)
- * MAINTAIN MSA OR ASSIGNED LEVEL AS APPROPRIATE FOR 2 MINUTES, THEN CLIMB TO FLIGHT PLAN LEVEL AND INTERCEPT FLIGHT PLAN TRACK (AS AMMENDED BY ATC IF APPLICABLE)

CHANGES : CHANGE APP FREQUENCY.