

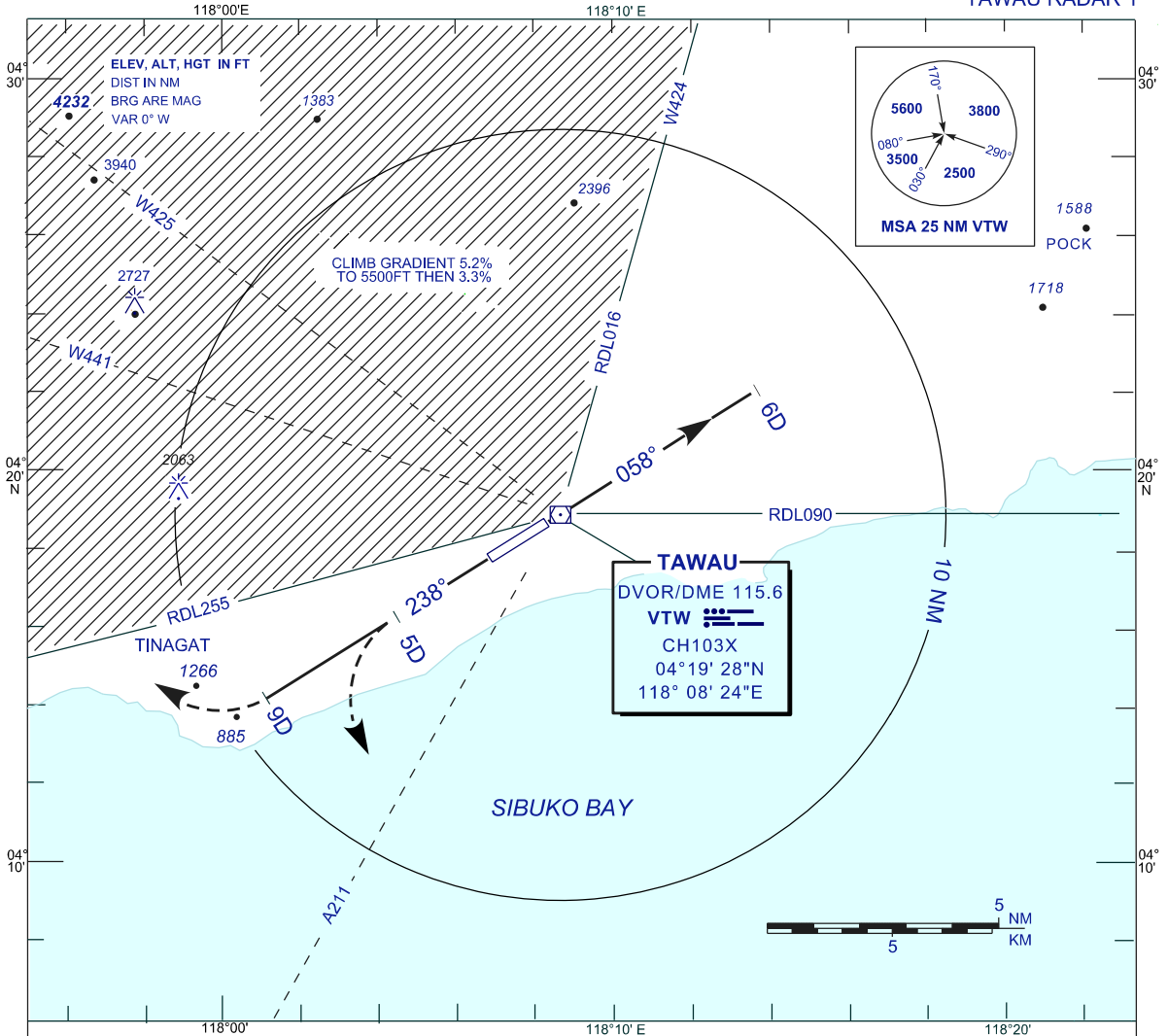
**STANDARD DEPARTURE CHART  
INSTRUMENT (SID) - ICAO**

TRANSITION ALTITUDE  
11 000 FT

SMC 121.90  
TWR 122.50  
APP 123.55  
ATIS 126.25

**TAWAU/TAWAU (WBKW)  
RWY 06/24**

TAWAU RADAR 1



**TAWAU RADAR ONE DEPARTURE**

**RWY06**

TRACK HEADING 058° AT 6 DME  
TURN TO ASSIGNED HEADING  
CONTACT TAWAU APPROACH  
WHEN AIRBORNE

**RWY24**

TRACK HEADING 238° AT 5 DME  
TURN LEFT OR AT 9 DME  
TURN RIGHT TO ASSIGNED HEADING  
CONTACT TAWAU  
APPROACH WHEN AIRBORNE

		RATE OF CLIMB					
		75	100	150	200	250	300
GND SPEED -KT							
GRADIENT	3.3%	251	334	501	668	835	1003
	5.2%	395	527	790	1053	1316	1580

**CLIMB GRADIENT :**  
MINIMUM CLIMB GRADIENT 3.3% UNLESS OTHERWISE SPECIFIED USE 5.2% CLIMB GRADIENT FROM LIFT - OFF IF ASSIGNED HEADING WILL TAKE AIRCRAFT INTO HATCHED AREA.

**COMMUNICATION FAILURE :**

IMMEDIATELY SQUAWK 7600  
MAINTAIN ASSIGNED HEADING CLIMB TO MSA OR LAST ASSIGNED LEVEL IF HIGHER  
MAINTAIN MSA OR ASSIGNED LEVEL AS APPLICABLE FOR 2 MINUTES  
THEN CLIMB TO FLIGHT PLANNED LEVEL AND INTERCEPT FLIGHT PLANNED TRACK  
(AS AMENDED BY ATC, IF APPLICABLE)