

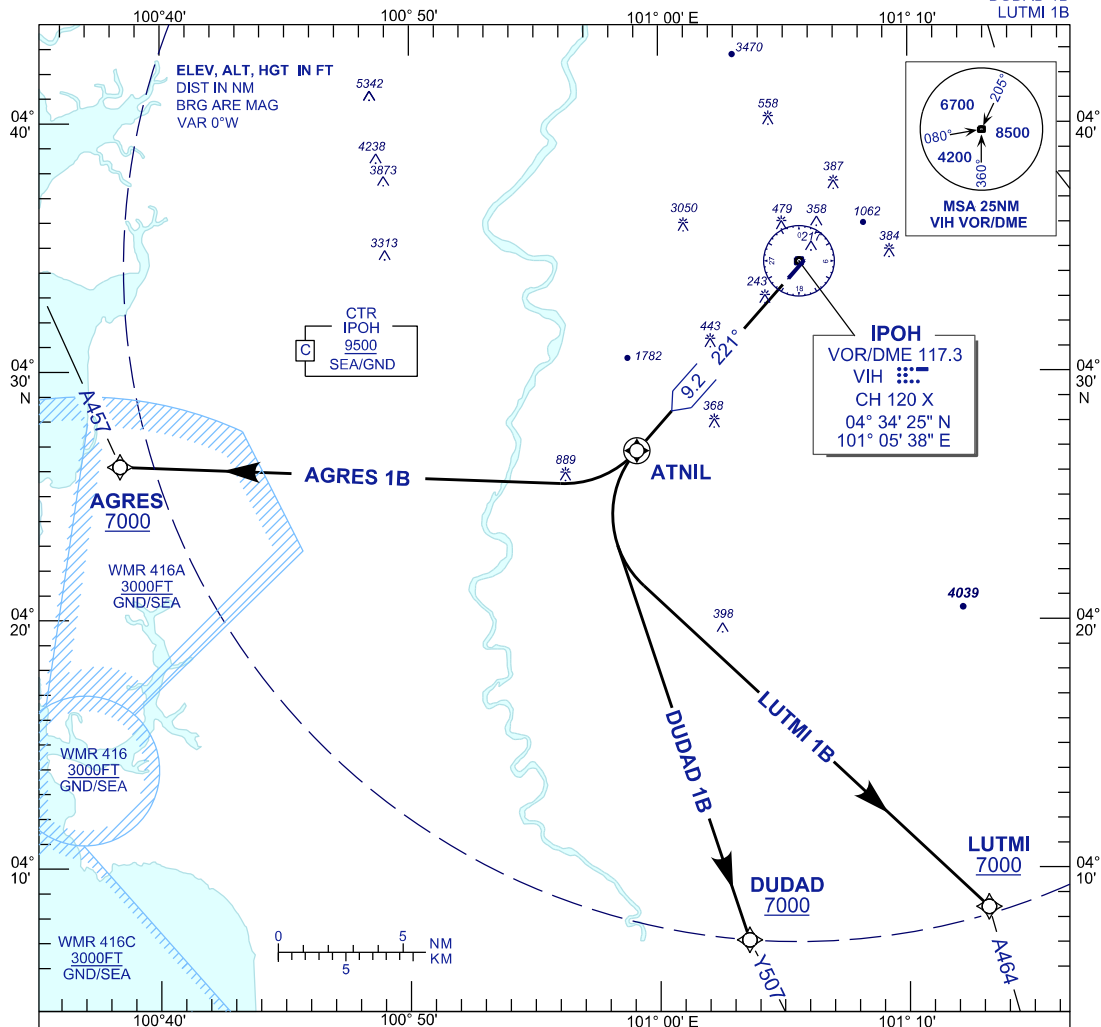
**STANDARD DEPARTURE CHART
INSTRUMENT (SID) - ICAO**

TRANSITION ALTITUDE
11000 FT

TWR 122.1
SMC 121.6
ATIS 127.05

**IPOH/SULTAN
AZLAN SHAH (WMKI)
RNAV (GNSS) RWY 22**

AGRES 1B
DUDAD 1B
LUTMI 1B



COMMUNICATION FAILURE :

SQUAWK 7600

- IF UNDER PILOT NAVIGATION, MAINTAIN LAST ASSIGNED LEVEL FOR 3 MINUTES, IF NO ONWARD CLEARANCE IS RECEIVED. SUBSEQUENTLY CLIMB TO COMPLY WITH SID.
- IF UNDER RADAR VECTORED : MAINTAIN VECTOR FOR 2 MINUTES, IF BELOW MSA, CLIMB TO MSA, THEN TRACK TO INTERCEPT CLEARED OR PREVIOUSLY ASSIGNED SID TO DESTINATION.

AERONAUTICAL DATA TABULATION

	FIX / POINT	COORDINATES
VIH VOR/DME	117.3 MHZ/120X	04°34'25.00"N 101°05'38.10"E
AGRES	RDL253 VIH / 28.4 DME	04°26'10.35"N 100°38'23.42"E
ATNIL	RDL221 VIH / 10 DME	04°26'47.50"N 100°59'06.80"E
DUDAD	RDL184 VIH / 27.3 DME	04°07'05.50"N 101°03'35.85"E
LUTMI	RDL164 VIH / 27 DME	04°08'24.94"N 101°13'11.78"E

CHANGES: AMEND SID NAME.