

**STANDARD DEPARTURE CHART
INSTRUMENT (SID) - ICAO**

APP	124.200	TWR	118.800
	118.650		GND
	135.250	ATIS	126.450

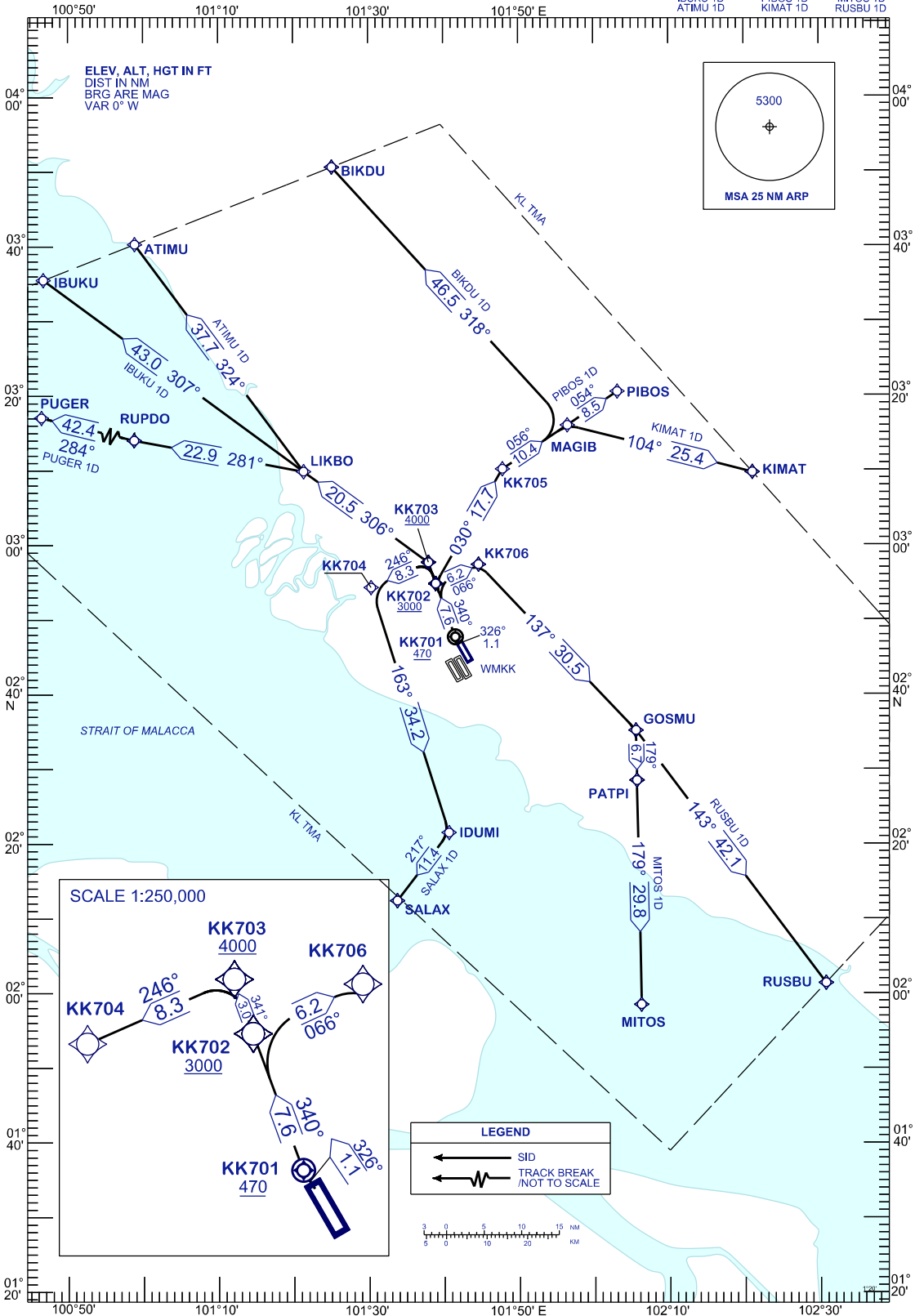
**SEPANG/KL INTERNATIONAL AIRPORT (WMKK)
RNAV (GNSS) RWY 32R**

PUGER 1D
IBUKU 1D
ATIMU 1D

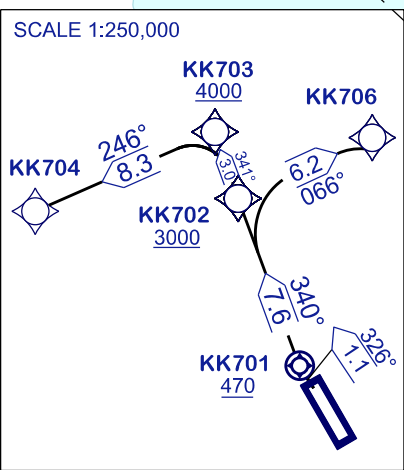
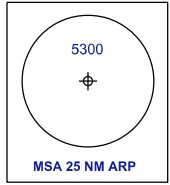
BIKDU 1D
PIBOS 1D
KIMAT 1D

SALAX 1D
MITOS 1D
RUSBU 1D

TRANSITION ALT 11000 FT



ELEV. ALT. HGT IN FT
DIST IN NM
BRG ARE MAG
VAR 0° W



LEGEND

- ← SID
- ← [wavy line] TRACK BREAK /NOT TO SCALE



CHANGES: CHANGE BEARING & DISTANCE BETWEEN MAGIB & PIBOS,
CHANGE DISTANCE BETWEEN RUPDO TO PUGER,
ADD BEARING & DISTANCE FROM RWY TO KK701.