

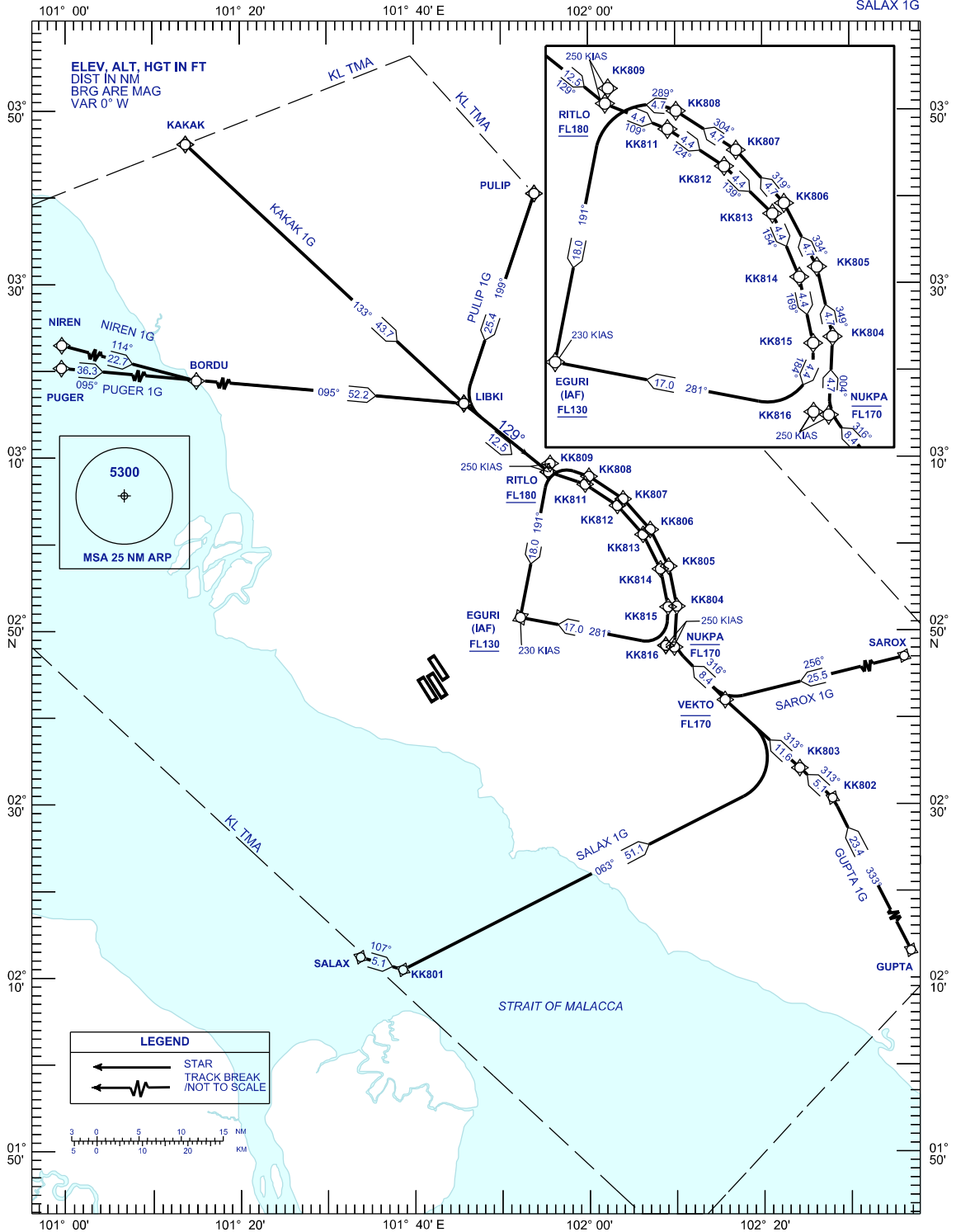
STANDARD ARRIVAL CHART INSTRUMENT (STAR) - ICAO

SEPANG/KL INTERNATIONAL AIRPORT (WMKK) RNAV (GNSS) RWY 32R, 32L, 33, 14L, 14R, 15

TRANSITION ALT 11000 FT

| | | | |
|-----|---------|------|---------|
| APP | 121.250 | TWR | 118.800 |
| | 124.200 | | 118.500 |
| | 118.650 | | 119.800 |
| | 125.850 | ATIS | 128.050 |
| | 135.750 | | |

PUGER 1G NIREN 1G KAKAK 1G KAKAK 1G
SAROX 1G PULIP 1G GUPTA 1G
PMS EAST SAROX 1G GUPTA 1G
SALAX 1G SALAX 1G



CHANGES: CHANGE BEARING & DISTANCE BETWEEN PUGER TO BORDU.