

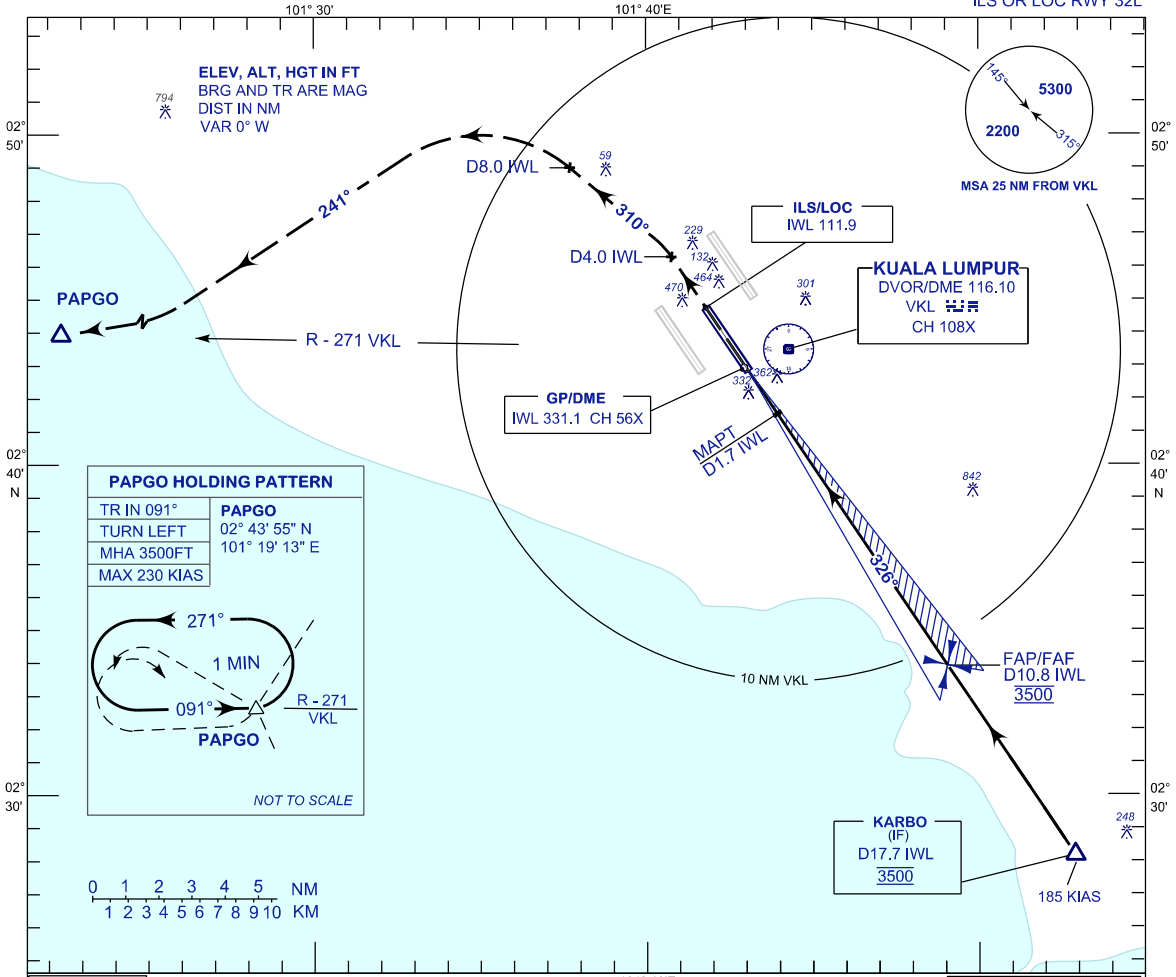
**INSTRUMENT  
APPROACH  
CHART - ICAO**

**AERODROME ELEV 69 FT**  
HEIGHT RELATED TO  
THR RWY 32L - ELEV 48 FT

APP 118.65 124.65 135.75	TWR 118.50	SMC 121.80 122.525	ATIS 128.05
-----------------------------------	---------------	--------------------------	----------------

**SEPANG/KL INTERNATIONAL  
AIRPORT (WMKK)**

ILS OR LOC RWY 32L

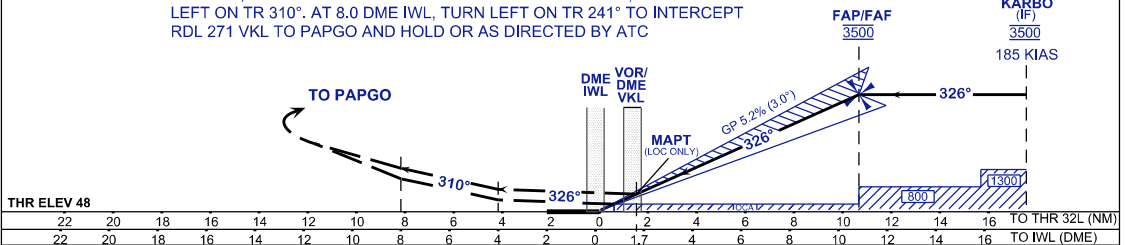


USE QNH  
ILS RDH 52 FT

**MISSED APPROACH**

AT MAPT, CLIMB TO 3500FT ON TR 326° UNTIL 4.0 DME IWL, TURN LEFT ON TR 310°. AT 8.0 DME IWL, TURN LEFT ON TR 241° TO INTERCEPT RDL 271 VKL TO PAPGO AND HOLD OR AS DIRECTED BY ATC

TRANSITION LEVEL FL130  
TRANSITION ALT 11 000



THR ELEV 48

OCA (OCH)	A	B	C	D
ILS/DME CAT I	288 (240)			
LOC/DME (GP INOP)	570 (522)			

GROUND SPEED (GS)	KT	80	100	120	140	160	180
FAP - RWY32L (10.7 NM)	MIN:SEC	8:01	6:25	5:21	4:35	4:01	3:34
RATE OF DESCEND (318.4 FT/NM)	FT/MIN	420	530	630	740	840	950

DME IWL	NM	10.8	9.8	8.8	7.8	6.8	5.8	4.8	3.8	2.8	1.8	0.8
DIST THR/RWY32L	NM	10.7	9.6	8.6	7.6	6.6	5.6	4.6	3.6	2.6	1.6	0.6
ALTITUDE	FT	3500	3157	2838	2520	2201	1883	1564	1246	928	609	291