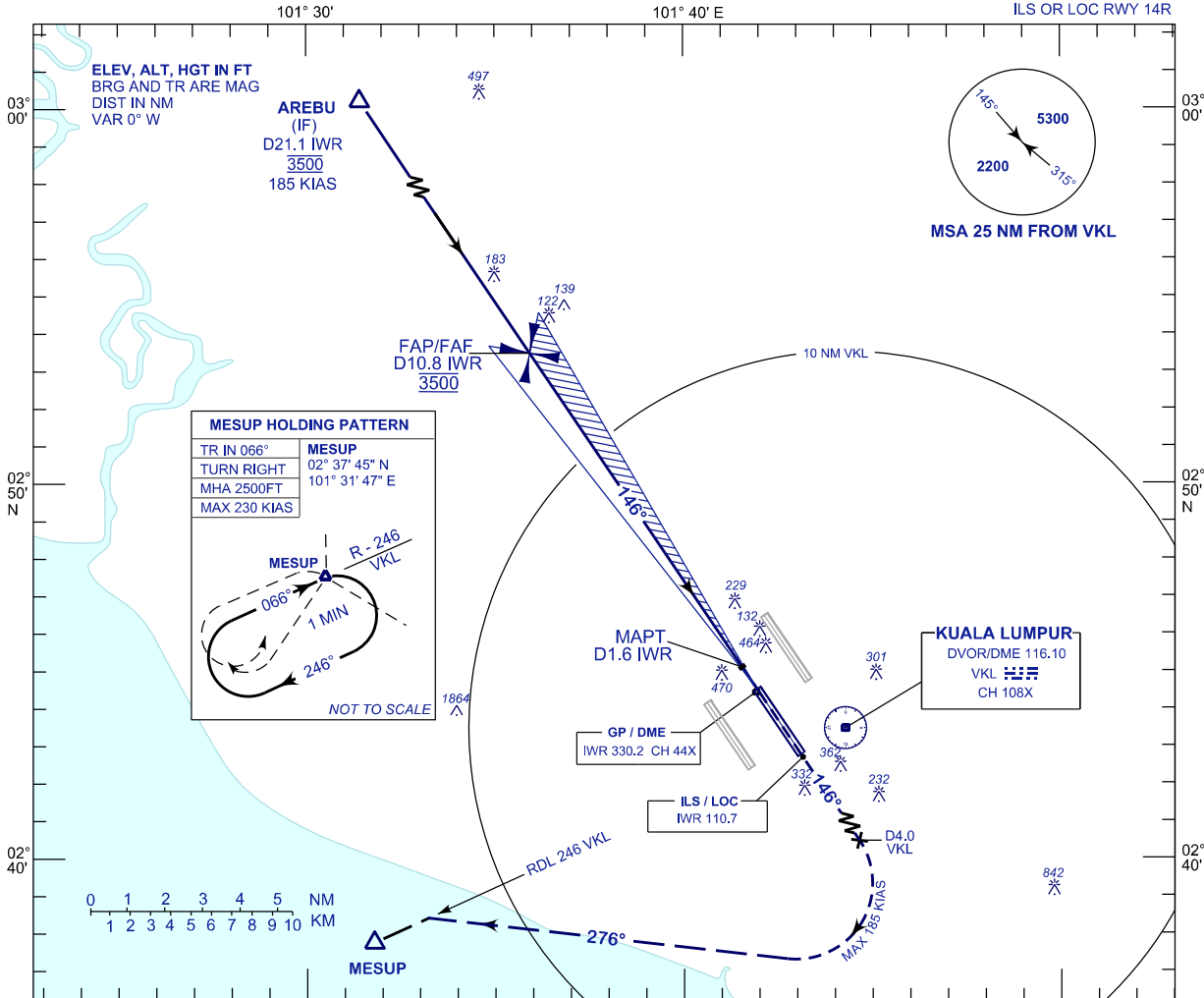


**INSTRUMENT
APPROACH
CHART - ICAO**

AERODROME ELEV 69 FT
HEIGHT RELATED TO
THR RWY 14R - ELEV 54 FT

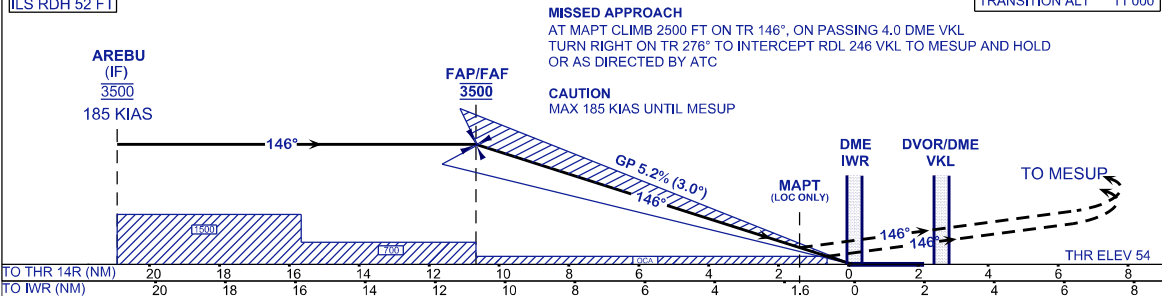
APP 118.65 120.35 135.75	TWR 118.80	SMC 121.80 122.525	ATIS 128.05
-----------------------------------	---------------	--------------------------	----------------

**SEPANG/KL INTERNATIONAL
AIRPORT (WMKK)**



USE QNH
ILS RDH 52 FT

TRANSITION LEVEL FL130
TRANSITION ALT 11 000



OCA (OCH)	A	B	C	D
ILS/DME CAT I		300 (246)		
LOC/DME (GP INOP)		650 (596)		

GROUND SPEED (GS)	KT	80	100	120	140	160	180
FAP - RWY14R (10.7 NM)	MIN:SEC	8:00	6:24	5:20	4:35	4:00	3:34
RATE OF DESCEND (318.4 FT/NM)	FT/MIN	420	530	630	740	840	950

DME IWR	NM	10.9	9.9	8.9	7.9	6.9	5.9	4.9	3.9	2.9	1.9	0.9
DIST THR/RWY14R	NM	10.7	9.7	8.7	7.7	6.7	5.7	4.7	3.7	2.7	1.7	0.7
ALTITUDE	FT	3500	3195	2877	2558	2240	1921	1603	1284	966	647	329

CHANGES : AMEND DISTANCE FM FAP/FAF TO IWR DME D10.9 TO D10.8.