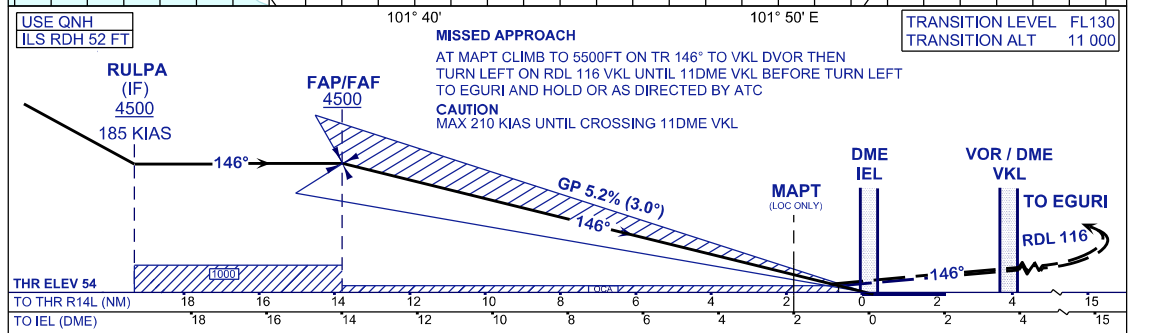
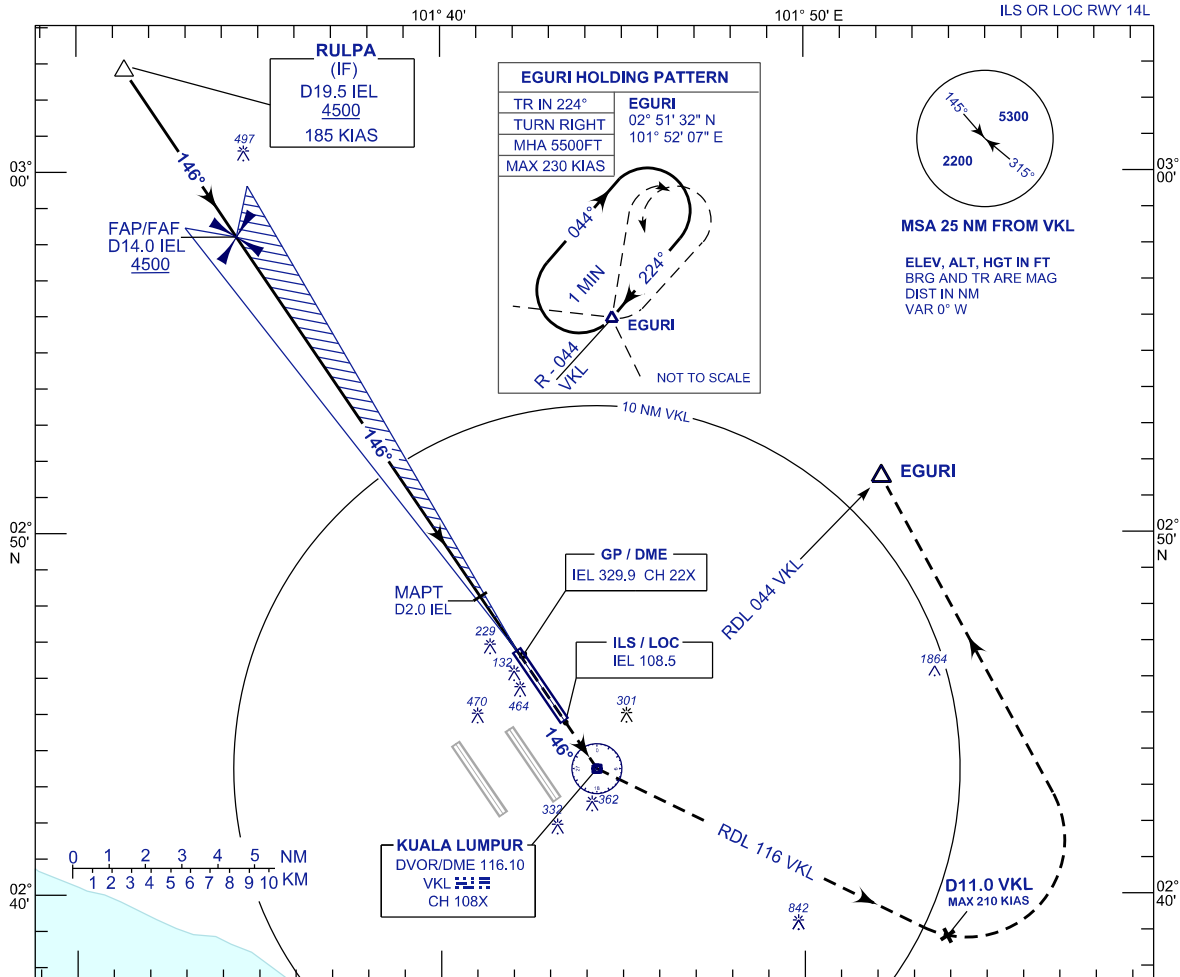


**INSTRUMENT
APPROACH
CHART - ICAO**

AERODROME ELEV 69 FT
HEIGHT RELATED TO
THR RWY 14L - ELEV 54 FT

APP 118.65 120.35 135.75	TWR 118.80	SMC 121.65	ATIS 128.05
-----------------------------------	---------------	---------------	----------------

**SEPANG/KL INTERNATIONAL
AIRPORT (WMKK)**



OCA (OCH)	A	B	C	D	GROUND SPEED (GS)	KT	80	100	120	140	160	180	200
ILS/DME CAT I	300 (246)				FAP - RWY14L (13.8 NM)	MIN:SEC	10:21	8:17	6:54	5:55	5:11	4:36	4:09
LOC/DME (GP INOP)	500 (446)				RATE OF DESCEND (318.4 FT/NM)	FT/MIN	420	530	630	740	840	950	1060

DME IEL	NM	14.0	13.0	12.0	11.0	10.0	9.0	8.0	7.0	6.0	5.0	4.0	3.0	2.0	1.0
DIST THR/RWY14L	NM	13.8	12.8	11.8	10.8	9.8	8.8	7.8	6.8	5.8	4.8	3.8	2.8	1.8	0.8
ALTITUDE	FT	4500	4182	3864	3546	3227	2909	2590	2272	1953	1635	1317	998	680	361