

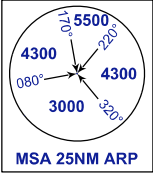
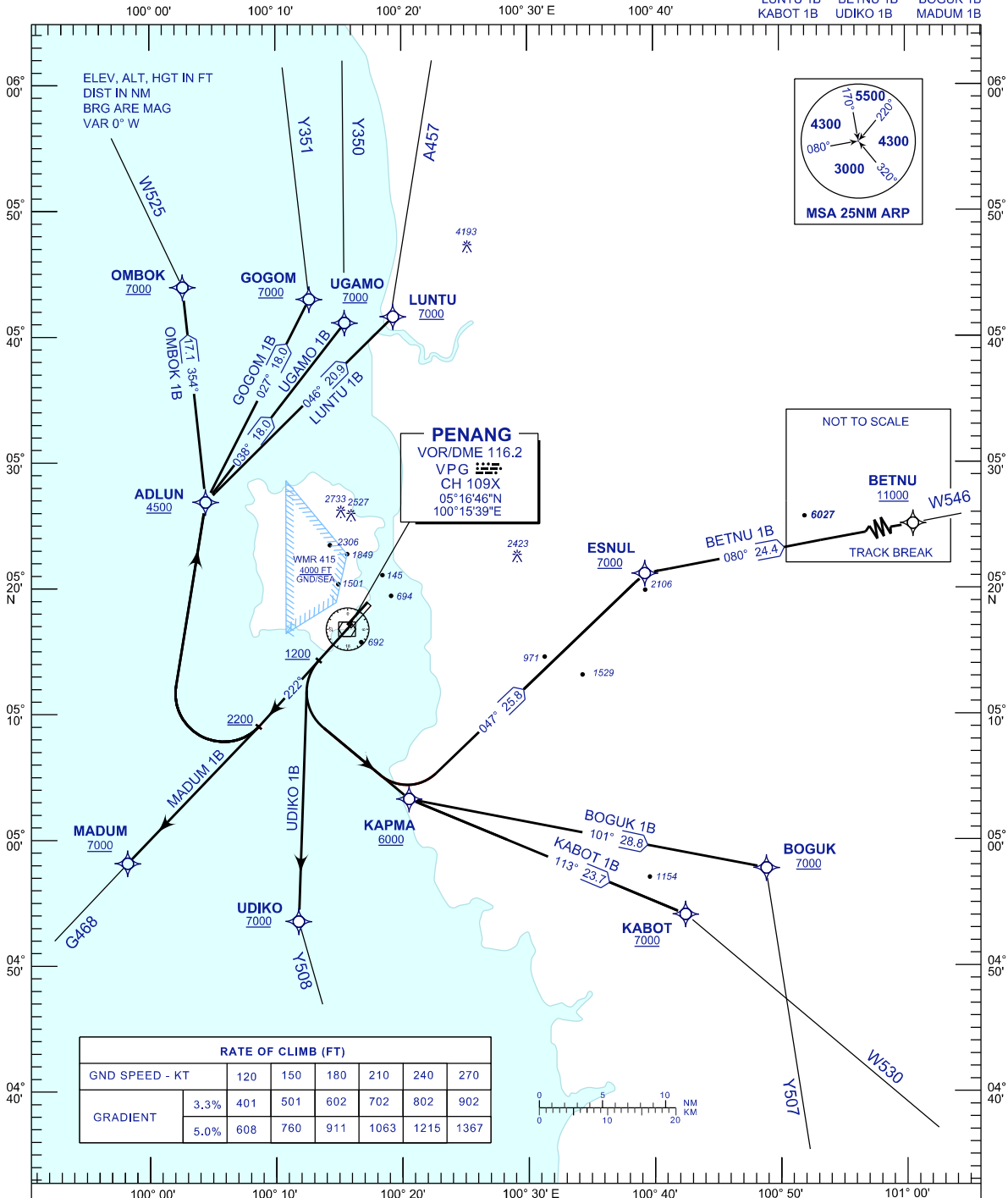
**STANDARD DEPARTURE CHART
INSTRUMENT (SID) - ICAO**

TRANSITION ALTITUDE
11000 FT

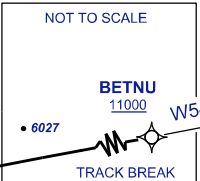
APP 125.925
TWR 121.1
SMC 121.6, 121.9
ATIS 126.4

**PENANG/PENANG
INTERNATIONAL AIRPORT (WMKP)
RNAV (GNSS) RWY 22**

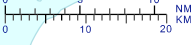
OMBOK 1B GOGOM 1B UGAMO 1B
LUNTU 1B BETNU 1B BOGUK 1B
KABOT 1B UDIKO 1B MADUM 1B



PENANG
VOR/DME 116.2
VPG
CH 109X
05°16'46"N
100°15'39"E



RATE OF CLIMB (FT)						
GND SPEED - KT	120	150	180	210	240	270
GRADIENT 3.3%	401	501	602	702	802	902
GRADIENT 5.0%	608	760	911	1063	1215	1367



COMMUNICATION FAILURE :

- SQUAWK 7600
- IF UNDER PILOT NAVIGATION, MAINTAIN LAST ASSIGNED LEVEL FOR 3 MINUTES, IF NO ONWARD CLEARANCE IS RECEIVED. SUBSEQUENTLY CLIMB TO COMPLY WITH SID.
- IF UNDER RADAR VECTORING : MAINTAIN VECTOR FOR 2 MINUTES, IF BELOW MSA, CLIMB TO MSA, THEN TRACK TO INTERCEPT CLEARED OR PREVIOUSLY ASSIGNED SID TO DESTINATION.

CHANGES: CHANGE APP FREQUENCY VALUE.