

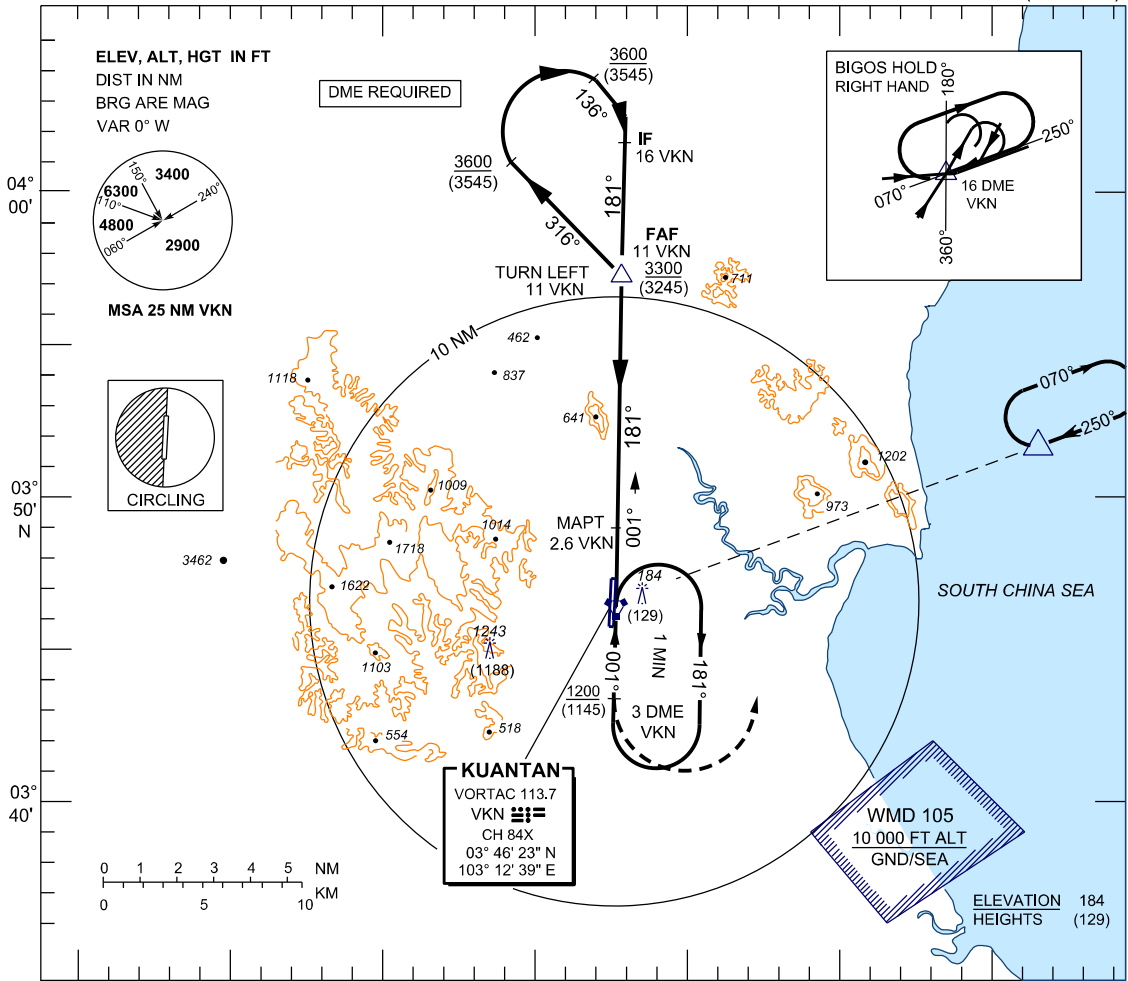
INSTRUMENT APPROACH CHART - ICAO

AERODROME ELEV 55 FT
 HEIGHT RELATED TO
 THR RWY 18 - ELEV 55 FT

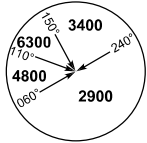
TWR 118.1, 238.1
 GND 263.9, 120.4
 APP 119.7, 121.5
 ATIS 127.5, 253.8
 SRA 261.6, 118.7

KUANTAN/SULTAN AHMAD SHAH (WMKD)
RWY 18

VOR Z
 (CAT C/D)



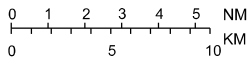
ELEV, ALT, HGT IN FT
 DIST IN NM
 BRG ARE MAG
 VAR 0° W



MSA 25 NM VKN



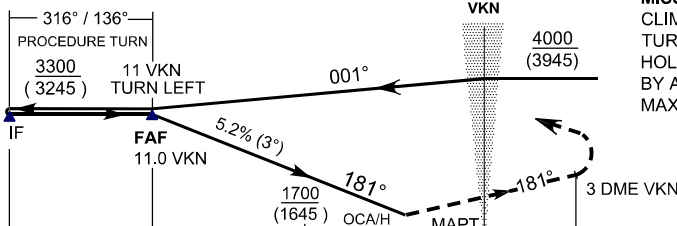
CIRCLING



103° 00' 103° 10'E 103° 20'

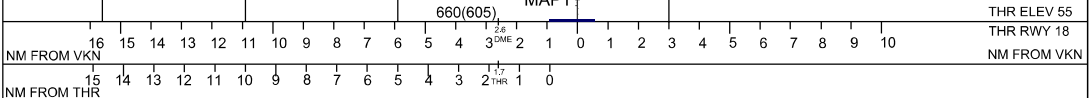
TRANSITION LEVEL FL 130
 TRANSITION ALT 11000

USE QNH



MISSED APPROACH

CLIMB ON 181° TO 4000 FT. AT 3 DME TURN LEFT HDG 047° TO BIGOS HOLDING PATTERN OR AS DIRECTED BY ATC.
 MAX IAS 265 KT IN TURN - WMD 105



OCA (H) FT.		
AIRCRAFT CATEGORY	C	D
STRAIGHT-IN - APPROACH	660 (605) / 2.6 DME	
CIRCLING	970 (915)	1800 (1745)
CIRCLING & MIN VISIBILITY - KM(NM)	3.7 (2.0)	4.6(2.5)

TIME TO THR RWY 18 FROM FAF DIST. 10 NM			
GROUND SPEED (KT)	70	90	120
MIN : SEC	8:35	6:40	5:00
5.2% DESCENT (FT / MIN)	370	480	640

CAUTION : CIRCLING IS NOT AUTHORISED WEST OF RUNWAY 18/36

ALTITUDE VS DME DISTANCE TO THR RWY 18										
DME DISTANCE	11	10	9	8	7	6	5	4	3	2.6
ALTITUDE	3300	2970	2650	2340	2020	1700	1380	950	740	660

THR ELEV 55
 THR RWY 18
 NM FROM VKN