

STANDARD ARRIVAL CHART INSTRUMENT (STAR) - ICAO

**KUANTAN/SULTAN
AHMAD SHAH (WMKD)
RWY 36 (RNAV)**

TRANSITION ALTITUDE
11,000 FT

TWR 118.1, 238.1
GND 263.9, 120.4
APP 119.7, 121.5
ATIS 127.5, 253.8
SRA 261.6, 118.7

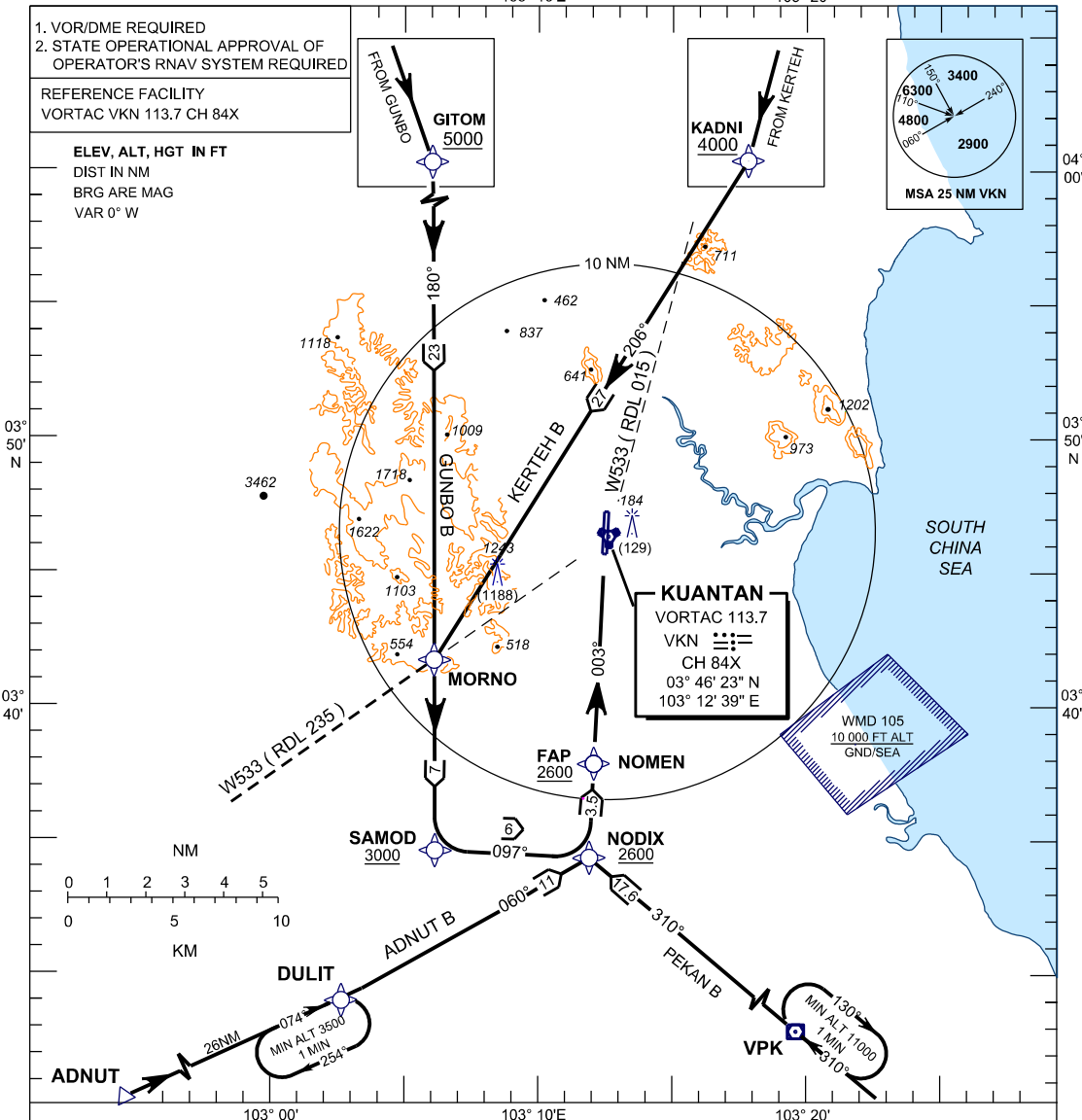
BANK ANGLE = 25° OR 3°/SEC

ADNUT B PEKAN B
GUNBO B KERTEH B

- VOR/DME REQUIRED
- STATE OPERATIONAL APPROVAL OF OPERATOR'S RNAV SYSTEM REQUIRED

REFERENCE FACILITY
VORTAC VKN 113.7 CH 84X

ELEV, ALT, HGT IN FT
DIST IN NM
BRG ARE MAG
VAR 0° W



ADNUT B ARRIVAL

- FROM ADNUT DIRECT TO DULIT
- THENCE TURN LEFT TO NODIX
- INTERCEPT LOC

GUNBO B ARRIVAL

- FROM GUNBO RDL 341 VKN DIRECT TO VKN
- AT GITOM TURN RIGHT DIRECT TO MORNO
- THENCE TO SAMOD TO NODIX
- INTERCEPT LOC

KERTEH B ARRIVAL

- FROM KERTEH (VKP) ON W533 DIRECT TO VKN
- AT KADNI DIRECT TO MORNO
- THENCE TO SAMOD TO NODIX
- INTERCEPT LOC

PEKAN B ARRIVAL

- FROM PEKAN (VPK) ON RDL 310 TO NODIX
- INTERCEPT LOC

VERTICAL RESTRICTIONS

ADHERE TO VERTICAL RESTRICTIONS eg. 5000 = NOT BELOW 5000 FT ON DESCENT UNLESS SPECIFICALLY CANCELLED BY ATC

COMMUNICATION FAILURE :

- * SQUAWK 7600
- * IF UNDER PILOT NAVIGATION, CONTINUE ON STAR AND LAND
- * IF UNDER 'RADAR VECTORING' : MAINTAIN VECTOR FOR 1 MINUTE
- * IF BELOW 'MSA', CLIMB TO 'MSA', THEN TRACK TO INTERCEPT CLEARED OR PREVIOUSLY ASSIGNED STAR AND LAND