

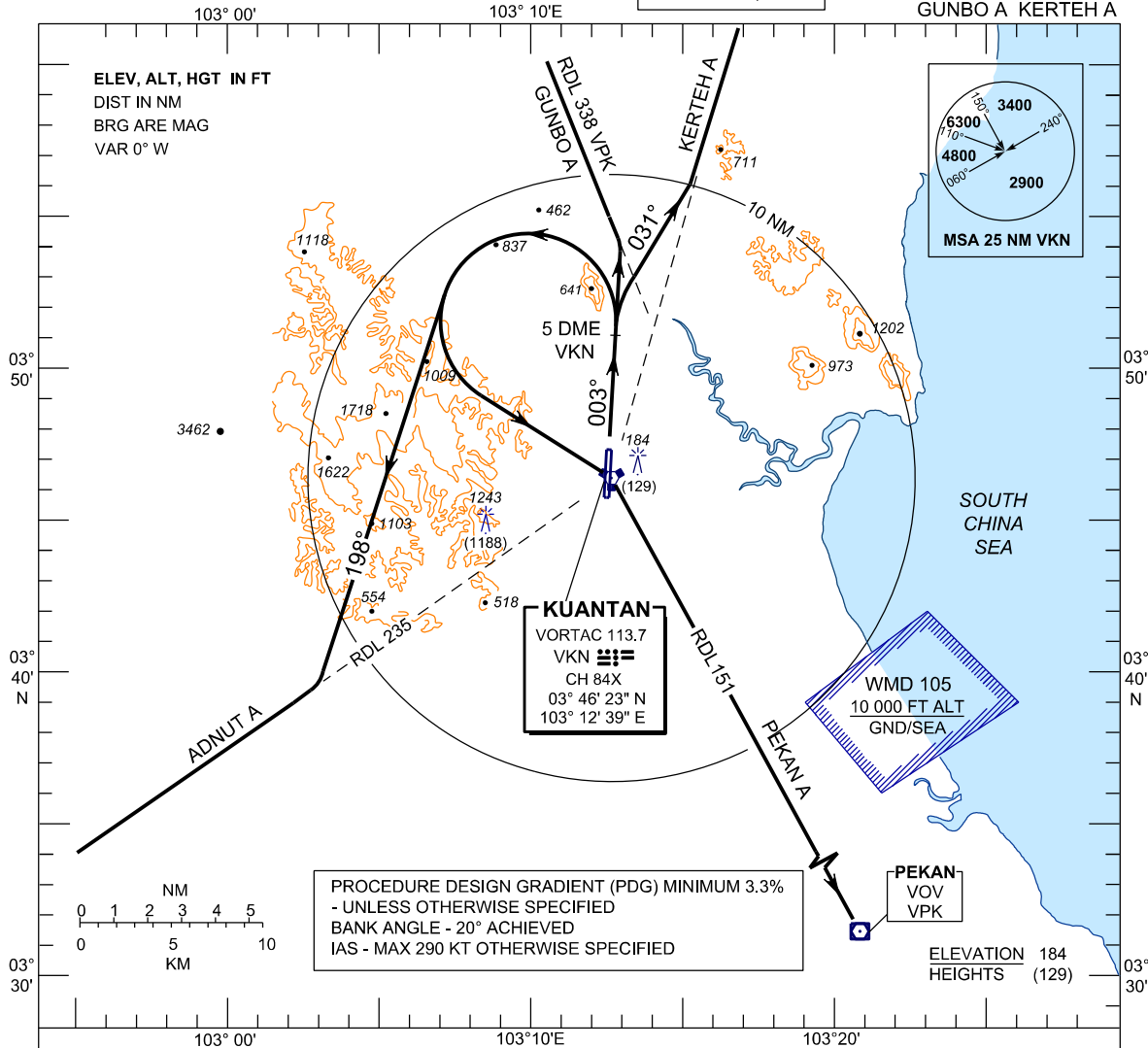
**STANDARD DEPARTURE CHART
INSTRUMENT (SID) - ICAO**

TRANSITION ALTITUDE
11,000 FT

TWR 118.1, 238.1
GND 263.9, 120.4
APP 119.7, 121.5
ATIS 127.5, 253.8
SRA 261.6, 118.7

**KUANTAN/SULTAN
AHMAD SHAH (WMKD)
RWY 36**

ADNUT A PEKANA
GUNBO A KERTEHA A



RUNWAY 36

- PDG : FOR GUNBO A 4.3% TO 8000 FT. - CTA
- INITIAL TRACK 003°

GUNBO A DEPARTURE

- INTERCEPT RDL 338 VPK INBOUND TO GUNBO

RUNWAY 36

RIGHT TURN

- PDG : FOR KERTEHA 3.6% TO 5000 FT - CTR
- INITIAL TRACK 003°

KERTEHA A DEPARTURE

- AT 5 DME VKN
- TURN RIGTH TRACK 031°
- INTERCEPT RDL 195 VPK INBOUND TO KERTEHA

RUNWAY 36

LEFT TURN

- PDG : FOR ADNUT A 3.7% TO 3000 FT - OBSTACLE
- PDG : FOR PEKANA 3.7% TO 3000 FT - OBSTACLE
- INITIAL TRACK 003°

ADNUT A DEPARTURE

- AT 5 DME VKN
- TURN LEFT TRACK 198°
- INTERCEPT RDL 235 VKN OUTBOUND TO ADNUT

PEKANA A DEPARTURE

- AT 5 DME VKN
- TURN LEFT TRACK TO VKN
- INTRCEPT VKN OUTBOUND RDL 151 TO PEKANA

COMMUNICATION FAILURE :

- * SQUAWK 7600
- * IF UNDER PILOT NAVIGATION MAINTAIN LAST ASSIGNED LEVEL FOR 3 MINUTES, IF NO ONWARD CLEARANCE IS RECEIVED SUBSEQUENTLY CLIMB TO COMPLY WITH SID
- * IF UNDER ' RADAR VECTORING ' : MAINTAIN VECTOR FOR 2 MINUTES
- * IF BELOW ' MSA ' , CLIMB TO ' MSA ' , THEN TRACK TO INTERCEPT CLEARED OR PREVIOUSLY ASSIGNED SID TO DESTINATION