

**STANDARD DEPARTURE CHART
INSTRUMENT (SID) - ICAO**

TWR 118.1, 238.1
GND 263.9, 120.4
APP 119.7, 121.5
ATIS 127.5, 253.8
SRA 261.6, 118.7

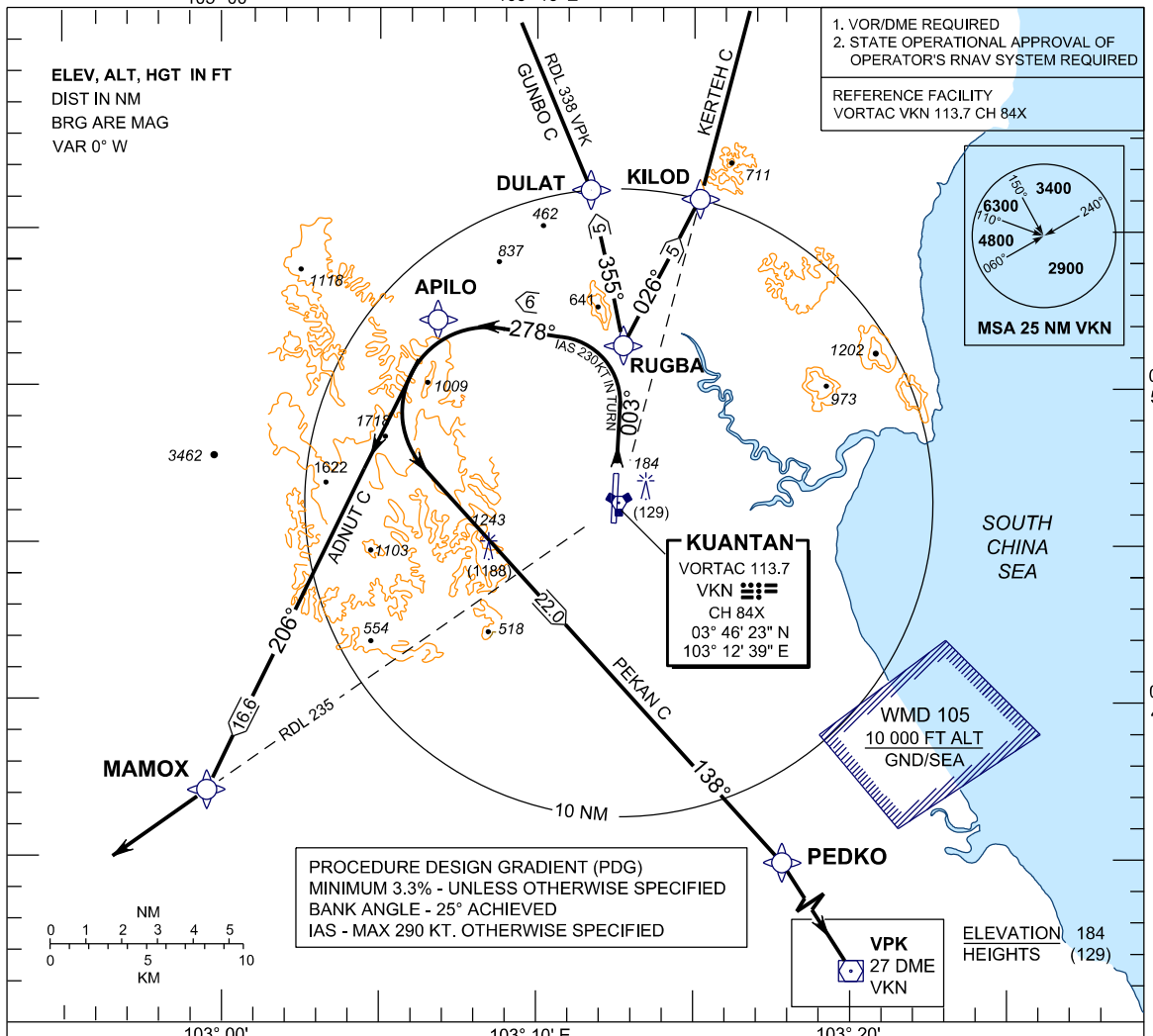
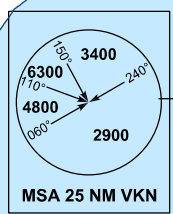
**KUANTAN/SULTAN
AHMAD SHAH (WMKD)
RWY 36 (RNAV)**

ADNUT C PEKAN C
GUNBO C KERTEH C

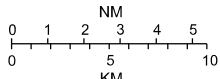
TRANSITION ALTITUDE
11,000 FT

1. VOR/DME REQUIRED
2. STATE OPERATIONAL APPROVAL OF
OPERATOR'S RNAV SYSTEM REQUIRED

REFERENCE FACILITY
VORTAC VKN 113.7 CH 84X



PROCEDURE DESIGN GRADIENT (PDG)
MINIMUM 3.3% - UNLESS OTHERWISE SPECIFIED
BANK ANGLE - 25° ACHIEVED
IAS - MAX 290 KT. OTHERWISE SPECIFIED



RUNWAY 36

- PDG : FOR GUNBO C, 4.3% TO 8000 FT. - CTA
- INITIAL TRACK 003°

GUNBO C DEPARTURE

- AT RUGBA TRACK TO DULAT TO GUNBO

RUNWAY 36

LEFT TURN
- PDG : FOR ADNUT C 3.7% TO 5000 FT - OBSTACLE
- PDG : FOR PEKAN C 3.7% TO 3000 FT - OBSTACLE
- INITIAL TRACK 003°

ADNUT C DEPARTURE

- AT RUGBA TURN LEFT
- TRACK TO APILO
- THENCE TO MAMOX TO ADNUT

PEKAN C DEPARTURE

- AT RUGBA TURN LEFT
- TRACK TO APILO
- THENCE TO PEDKO TO PEKAN

RUNWAY 36

RIGHT TURN
- PDG : FOR KERTEH C 3.6% TO 5000 FT - CTR
- INITIAL TRACK 003°

KERTEH C DEPARTURE

- AT RUGBA TURN RIGHT
- TRACK TO KILOD TO KERTEH

COMMUNICATION FAILURE :

- * SQUAWK 7600
- * IF UNDER PILOT NAVIGATION MAINTAIN LAST ASSIGNED LEVEL FOR 3 MINUTES, IF NO ONWARD CLEARANCE IS RECEIVED SUBSEQUENTLY CLIMB TO COMPLY WITH SID
- * IF UNDER ' RADAR VECTORED ' : MAINTAIN VECTOR FOR 2 MINUTES
- * IF BELOW ' MSA ' , CLIMB TO ' MSA ' , THEN TRACK TO INTERCEPT CLEARED OR PREVIOUSLY ASSIGNED SID TO DESTINATION