

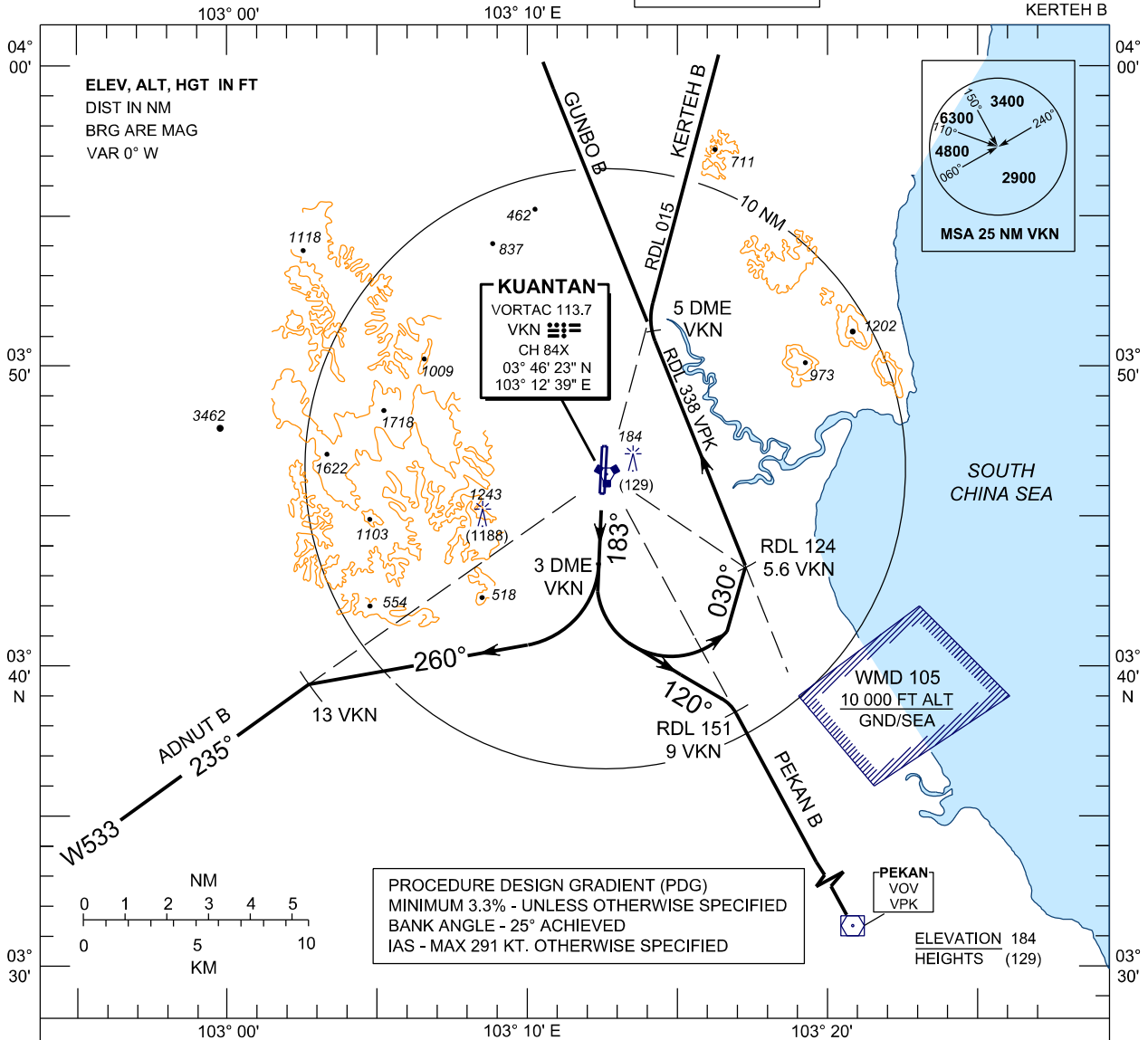
**STANDARD DEPARTURE CHART
INSTRUMENT (SID) - ICAO**

**KUANTAN/SULTAN
AHMAD SHAH (WMKD)
RWY 18**

TRANSITION ALTITUDE
11,000 FT

TWR 118.1, 238.1
GND 263.9, 120.4
APP 119.7, 121.5
ATIS 127.5, 253.8
SRA 261.6, 118.7

ADNUT B PEKAN B GUNBO B
KERTEH B



PROCEDURE DESIGN GRADIENT (PDG)
MINIMUM 3.3% - UNLESS OTHERWISE SPECIFIED
BANK ANGLE - 25° ACHIEVED
IAS - MAX 291 KT. OTHERWISE SPECIFIED

PEKAN VOV VPK
ELEVATION 184
HEIGHTS (129)

RUNWAY 18

RIGHT TURN

- PDG : FOR ADNUT B, 4.5.% TO 7000FT.
- OBSTACLE, CTA
- INITIAL TRACK 183°

ADNUT B DEPARTURE

- AT 3 DME VKN, TURN RIGHT
- TRACK 260°
- INTERCEPT RDL 235 OUTBOUND TO ADNUT

RUNWAY 18

LEFT TURN

- PDG : FOR PEKAN B, 4.3 % TO 8000FT. - CTA
- INITIAL TRACK 183°

- FOR GUNBO B, DEPARTURE AND KERTEH B, DEPARTURE

- MAX. IAS 265 KT. IN TURN - WMD 105

GUNBO B DEPARTURE

- AT 3 DME VKN, TURN LEFT- TRACK 030°
- INTERCEPT RDL 338 VPK TO GUNBO

KERTEH B DEPARTURE

- AT 3 DME VKN, TURN LEFT
- TRACK 030° TO INTECEPT RDL 338 VPK
- CROSSING 5 DME VKN
- INTERCEPT RDL 015 VKN TO KERTEH

PEKAN B DEPARTURE

- AT 3 DME VKN, TURN LEFT
- TRACK 120°
- INTERCEPT RDL 151 VKN TO PEKAN

COMMUNICATION FAILURE :

- * SQUAWK 7600
- * IF UNDER PILOT NAVIGATION MAINTAIN LAST ASSIGNED LEVEL FOR 3 MINUTES, IF NO ONWARD CLEARANCE IS RECEIVED SUBSEQUENTLY CLIMB TO COMPLY WITH SID
- * IF UNDER ' RADAR VECTORED ' : MAINTAIN VECTOR FOR 2 MINUTES
- * IF BELOW ' MSA ' , CLIMB TO ' MSA ' , THEN TRACK TO INTERCEPT CLEARED OR PREVIOUSLY ASSIGNED SID TO DESTINATION