

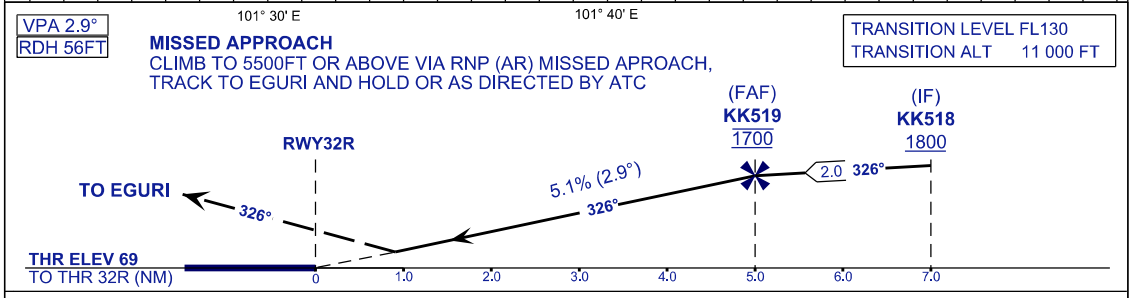
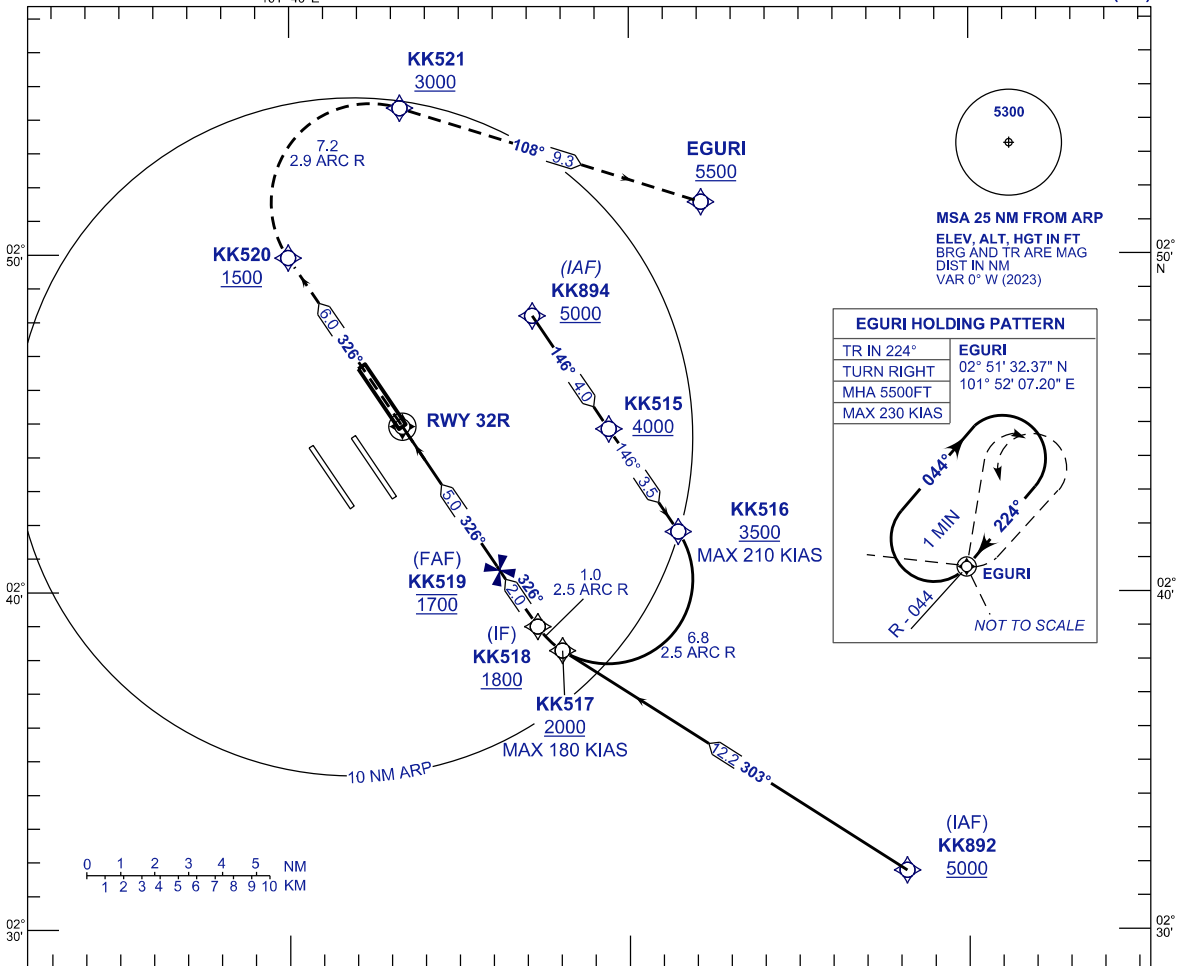
**INSTRUMENT
APPROACH
CHART - ICAO**

AERODROME ELEV 69 FT
HEIGHT RELATED TO
THR RWY 32R - ELEV 69 FT

APP 121.25 120.35 135.75	TWR 118.50 118.80	SMC 121.65	ATIS 128.05
-----------------------------------	-------------------------	---------------	----------------

**SEPANG/KL INTERNATIONAL
AIRPORT (WMKK)**

RNP Z RWY 32R (AR)



STRAIGHT - IN APPROACH		OCA (OCH)	
CATEGORY OF AIRCRAFT		C	D
RNP (0.30)		499 (430)	
CIRCLING AND ALTERNATE N/A			

AUTHORIZATION REQUIRED

- NOTES**
- 1) APPROACH NOT AUTHORIZED WHEN AIRPORT TEMPERATURE BELOW 18°C OR ABOVE 40°C.
 - 2) RF REQUIRED.
 - 3) WMKK ALTIMETER SETTING REQUIRED.
 - 4) GNSS REQUIRED.
 - 5) PAPI AND VERTICAL PATH ANGLE NOT COINCIDENT.
 - 6) RNP 0.30 FROM IAFS TO THRESHOLD.
 - 7) RNP 0.50 FROM RWY32R TO KK520
- DISTANCE IN NM. BEARING ARE MAGNETIC. ELEVATION IN FEET AMSL.

CHANGES : FOR WPT KK521 CHANGE FM FLY-OVER TO FLY BY, ALT KK519 TO READ AS AT 1700 IN PROFILE VIEW.