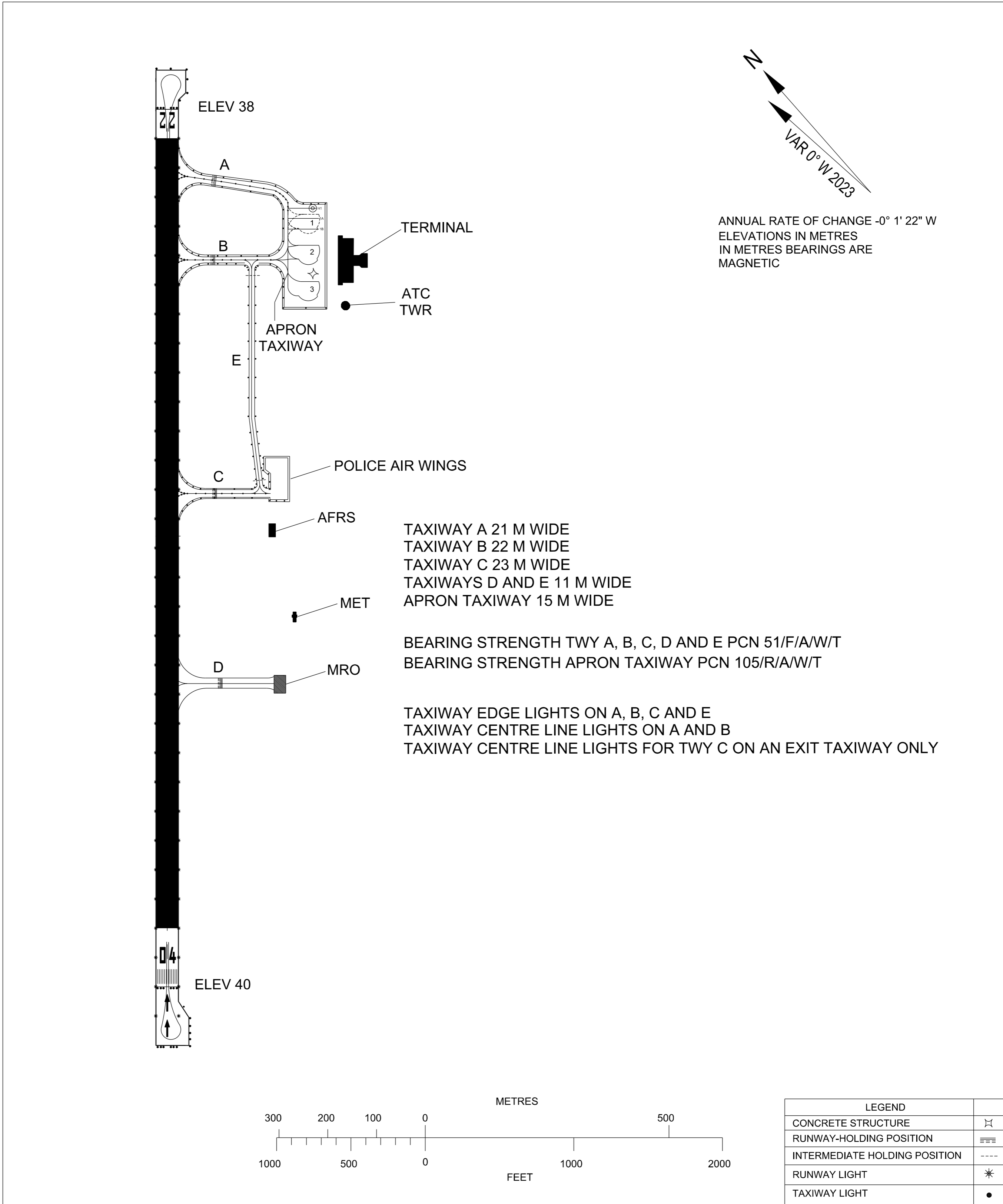


**AERODROME GROUND  
MOVEMENT CHART - ICAO**

APRON ELEV  
55M

TWR 122.1  
SMC 121.6  
ATIS 127.05

**IPOH/SULTAN  
AZLAN SHAH AIRPORT**



ANNUAL RATE OF CHANGE -0° 1' 22" W  
ELEVATIONS IN METRES  
IN METRES BEARINGS ARE  
MAGNETIC

TAXIWAY A 21 M WIDE  
TAXIWAY B 22 M WIDE  
TAXIWAY C 23 M WIDE  
TAXIWAYS D AND E 11 M WIDE  
APRON TAXIWAY 15 M WIDE

BEARING STRENGTH TWY A, B, C, D AND E PCN 51/F/A/W/T  
BEARING STRENGTH APRON TAXIWAY PCN 105/R/A/W/T

TAXIWAY EDGE LIGHTS ON A, B, C AND E  
TAXIWAY CENTRE LINE LIGHTS ON A AND B  
TAXIWAY CENTRE LINE LIGHTS FOR TWY C ON AN EXIT TAXIWAY ONLY

LEGEND	
CONCRETE STRUCTURE	⊠
RUNWAY-HOLDING POSITION	≡≡≡
INTERMEDIATE HOLDING POSITION	----
RUNWAY LIGHT	*
TAXIWAY LIGHT	•

**CHANGES:** ADD INFO ON BAY H1, BAY 1A, BAY 1B