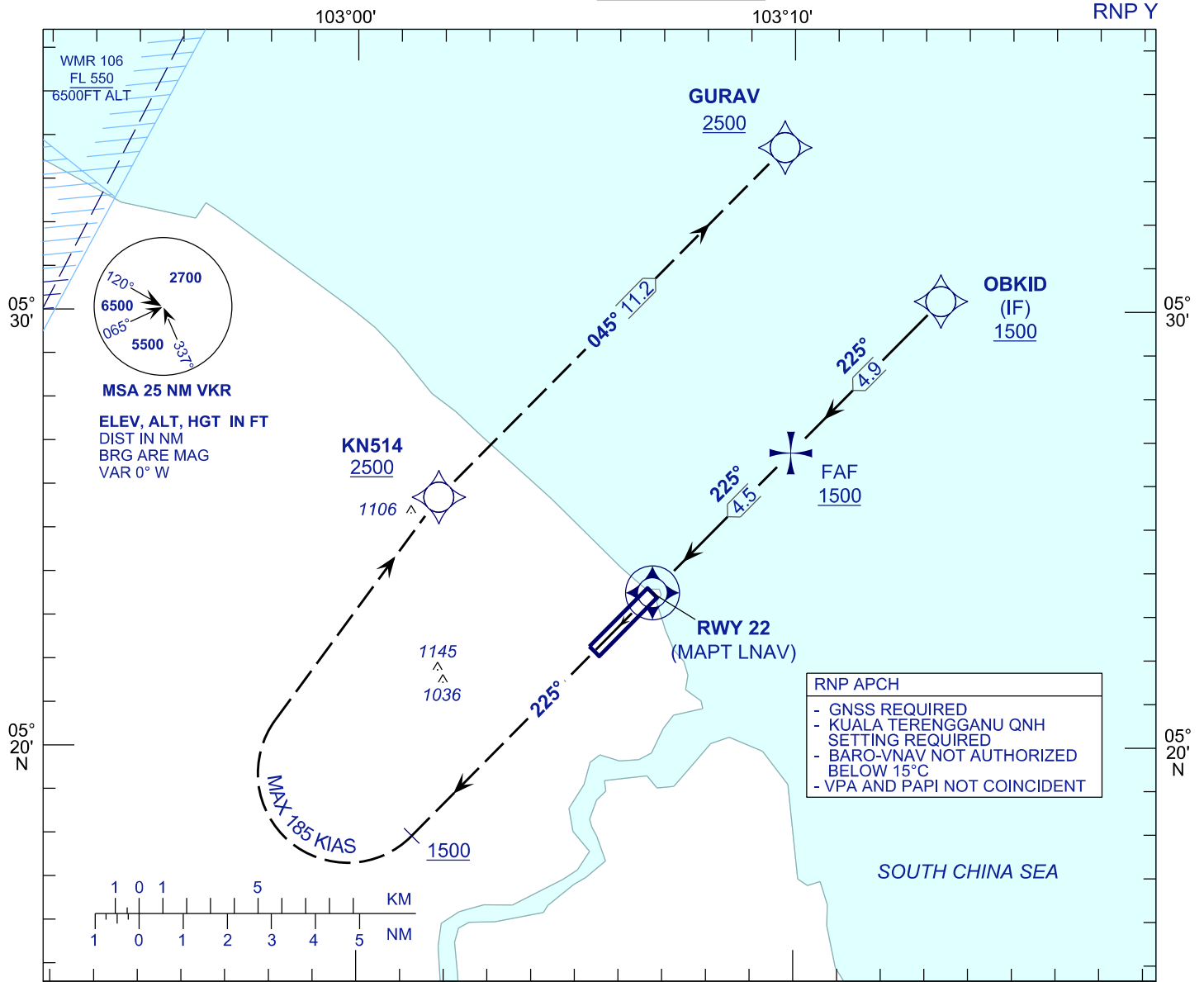


**INSTRUMENT  
APPROACH  
CHART - ICAO**

**AERODROME ELEV 20 FT**  
HEIGHT RELATED TO  
THR RWY 22 - ELEV 20 FT

APP	123.6
	235.32
	121.5
TWR	119.05
SMC	121.6
ATIS	126.65

**KUALA TERENGGANU/  
SULTAN MAHMUD (WMKN)  
RWY 22**

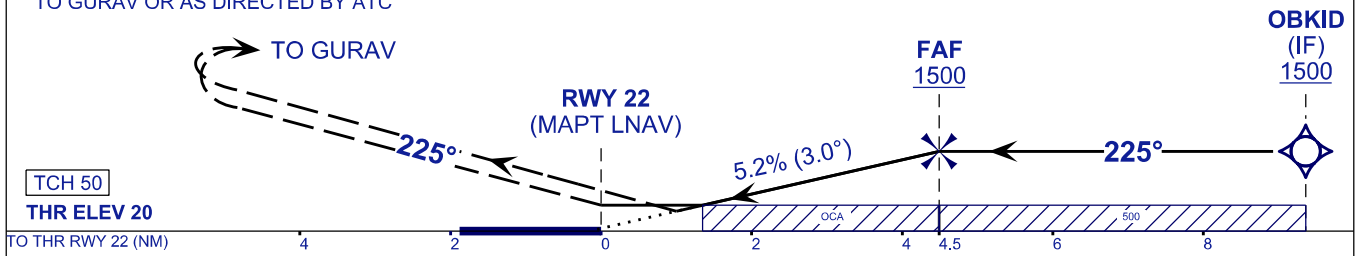


**RNP APCH**

- GNSS REQUIRED
- KUALA TERENGGANU QNH SETTING REQUIRED
- BARO-VNAV NOT AUTHORIZED BELOW 15°C
- VPA AND PAPI NOT COINCIDENT

**MISSED APPROACH**  
AT MAPT CLIMB TO 2500FT ON HDG 225°,  
PASSING 1500FT TURN RIGHT TO KN514 THEN  
TO GURAV OR AS DIRECTED BY ATC

TRANSITION LEVEL FL130  
TRANSITION ALT 11000



OCA (OCH)	A	B	C	D
LNAV	500 (480)			
LNAV / VNAV	342 (322)		388 (368)	

DIST THR/RWY22	NM	4.5	3.5	2.5	1.5	0.5
ALTITUDE	FT	1500	1185	867	548	230

GROUND SPEED (GS)	KTS	80	100	120	140	160	180
FAP - RWY22 (4.5 NM)	MIN:SEC	3:22	2:42	2:15	1:55	1:41	1:30
RATE OF DESCEND (318.4 FT/NM)	FT/MIN	420	530	640	740	850	960

**CHANGES : AERODROME AND THRESHOLD ELEVATION**