

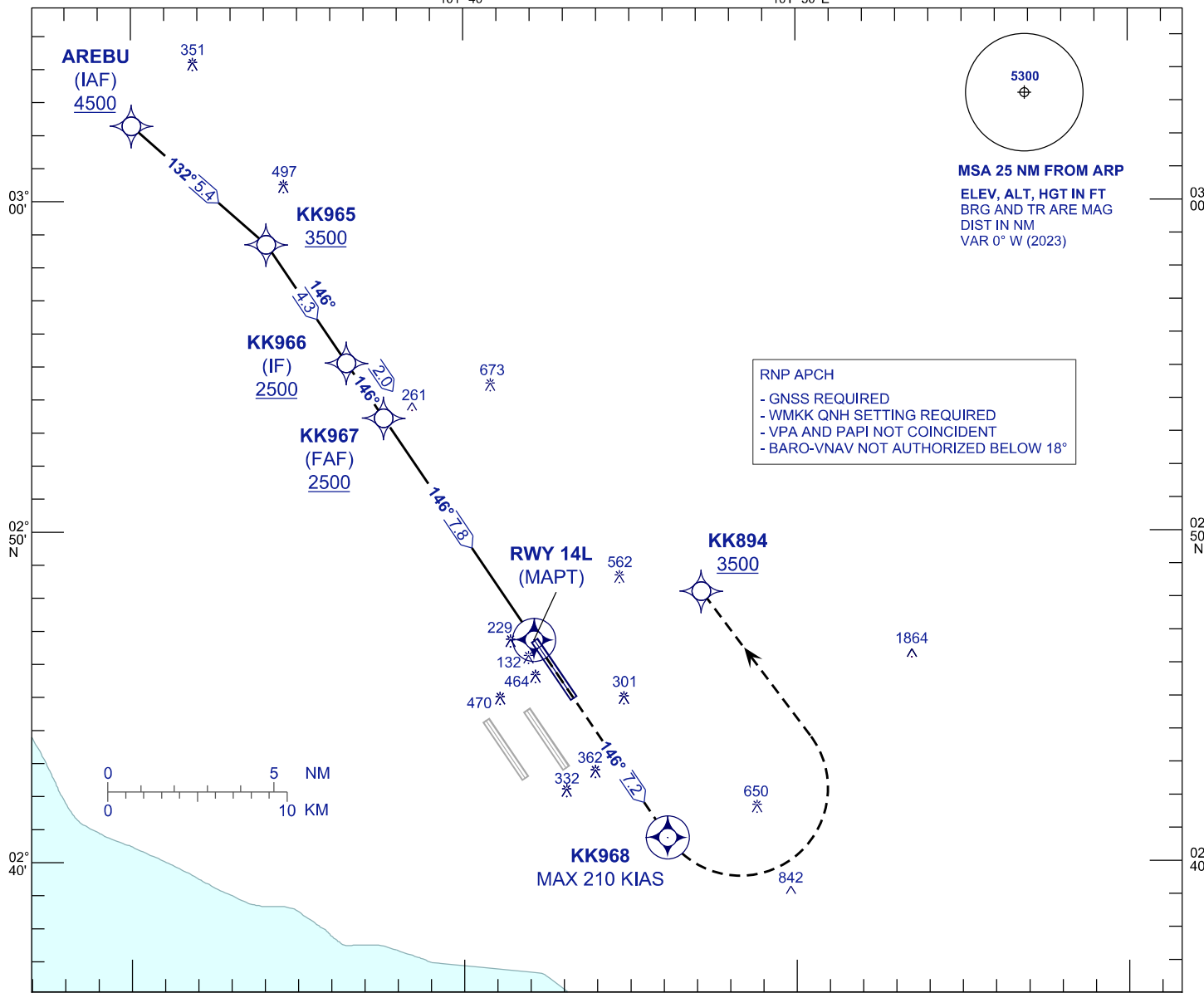
**INSTRUMENT
APPROACH
CHART - ICAO**

AERODROME ELEV 69 FT
HEIGHT RELATED TO
THR RWY 14L - ELEV 54 FT

APP 118.65 120.35 135.75	TWR 118.80	SMC 121.65	ATIS 128.05
-----------------------------------	---------------	---------------	----------------

**SEPANG/KL INTERNATIONAL
AIRPORT (WMKK)**

RNP X RWY 14L



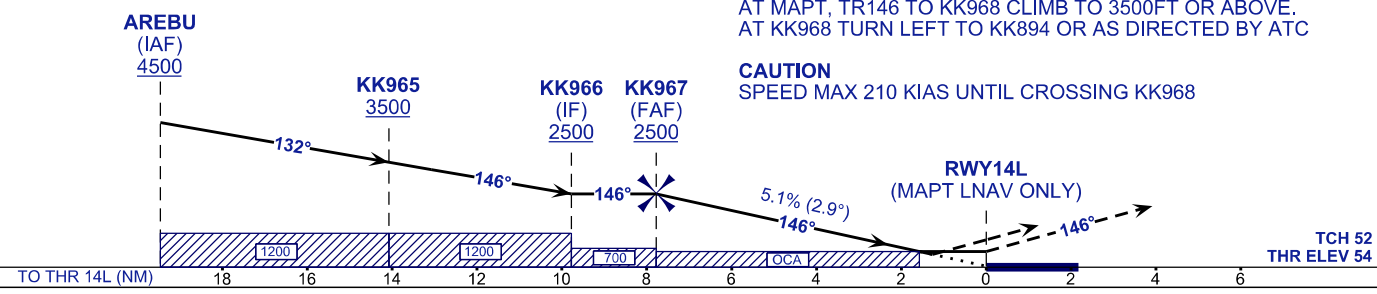
RNP APCH
- GNSS REQUIRED
- WMKK QNH SETTING REQUIRED
- VPA AND PAPI NOT COINCIDENT
- BARO-VNAV NOT AUTHORIZED BELOW 18°

VPA 2.9°
TCH 52 FT

TRANSITION LEVEL FL130
TRANSITION ALT 11 000

MISSED APPROACH
AT MAPT, TR146 TO KK968 CLIMB TO 3500FT OR ABOVE.
AT KK968 TURN LEFT TO KK894 OR AS DIRECTED BY ATC

CAUTION
SPEED MAX 210 KIAS UNTIL CROSSING KK968



STRAIGHT-IN APPROACH	OCA (OCH)			
CATEGORY OF AIRCRAFT	A	B	C	D
LNAV / VNAV	494 (440)			
LNAV	590 (536)			

GROUND SPEED (GS)	KNOTS	80	100	120	140	160	180
FAF - RWY14L (7.8 NM)	MIN:SEC	5:50	4:40	3:53	3:20	2:55	2:36
RATE OF DESCENT (5.1% / 2.9°)	FT/MIN	410	510	620	720	820	920

DIST THR / RWY14L	NM	7.8	7.0	6.0	5.0	4.0	3.0	2.0	1.0
ALTITUDE	FT	2500	2261	1953	1646	1338	103	722	414

CHANGES : IN PROFILE VIEW, AMEND MAG TRACK FM AREBU TO KK965 TO READ AS 132°.