

STANDARD ARRIVAL CHART INSTRUMENT (STAR) - ICAO

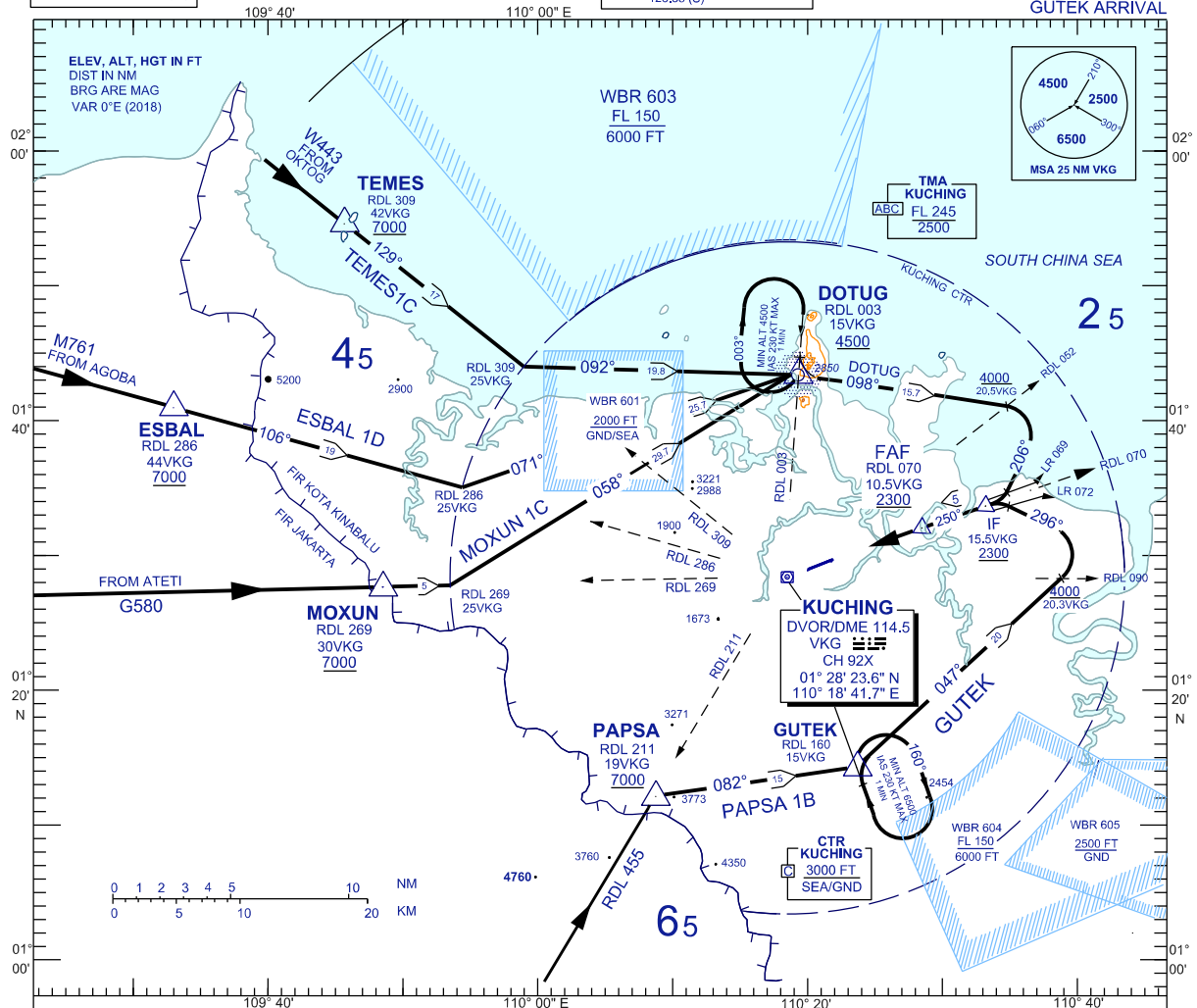
**KUCHING/KUCHING (WBGG)
RWY 25**

TRANSITION ALTITUDE
11,000 FT

TWR	118.1 (P) 121.7 (S)	SMC	121.9 128.4
APP	120.2 (P) 123.85 (S)	FIS	134.75
ACC	134.5 (P) 125.35 (S)		

DOTUG ARRIVAL
GUTEK ARRIVAL

BANK ANGLE : 25° OR 3°/SEC



TRANSITIONS

- TEMES ONE CHARLIE:** FROM TEMES TRACK 129° TILL 25DME VKG, THEN TRACK 092° TO DOTUG
- ESBAL ONE DELTA :** FROM ESBAL TRACK 106° TILL 25DME VKG , THEN TRACK 071° TO DOTUG
- MOXUN ONE CHARLIE :** FROM MOXUN TRACK 089° TILL 25DME VKG, THEN TRACK 058° TO DOTUG
- PAPSA ONE BRAVO :** FROM PAPSA, TRACK 082° TO GUTEK

DOTUG ARRIVAL

- FROM DOTUG TRACK 098°, ON CROSSING RDL 052,
- TURN RIGHT TRACK 206° TO INTERCEPT LOC
RWY 25 OR RDL 070 FOR VKG

GUTEK ARRIVAL

- FROM GUTEK TRACK 047°, ON CROSSING RDL 090,
- TURN LEFT TRACK 296° TO INTERCEPT LOC
RWY 25 OR RDL 070 FOR VKG

VERTICAL RESTRICTIONS :

ADHERE TO VERTICAL RESTRICTIONS eg. 7000 = NOT BELOW 7000 FT ON DESCENT UNLESS SPECIFICALLY CANCELLED BY ATC.

COMMUNICATIONS FAILURE :

- * SQUAWK 7600
- * IF UNDER PILOT NAVIGATION, CONTINUE ON STAR AND LAND
- * IF UNDER RADAR VECTORED, MAINTAIN VECTOR FOR 1 MINUTE, IF BELOW MSA, CLIMB TO MSA, THEN TRACK TO INTERCEPT CLEARED OR PREVIOUSLY ASSIGNED STAR AND LAND

CHANGES : REMOVE TAS < 250 KT FROM FREQUENCY BOX.