

STANDARD DEPARTURE CHART INSTRUMENT (SID) - ICAO

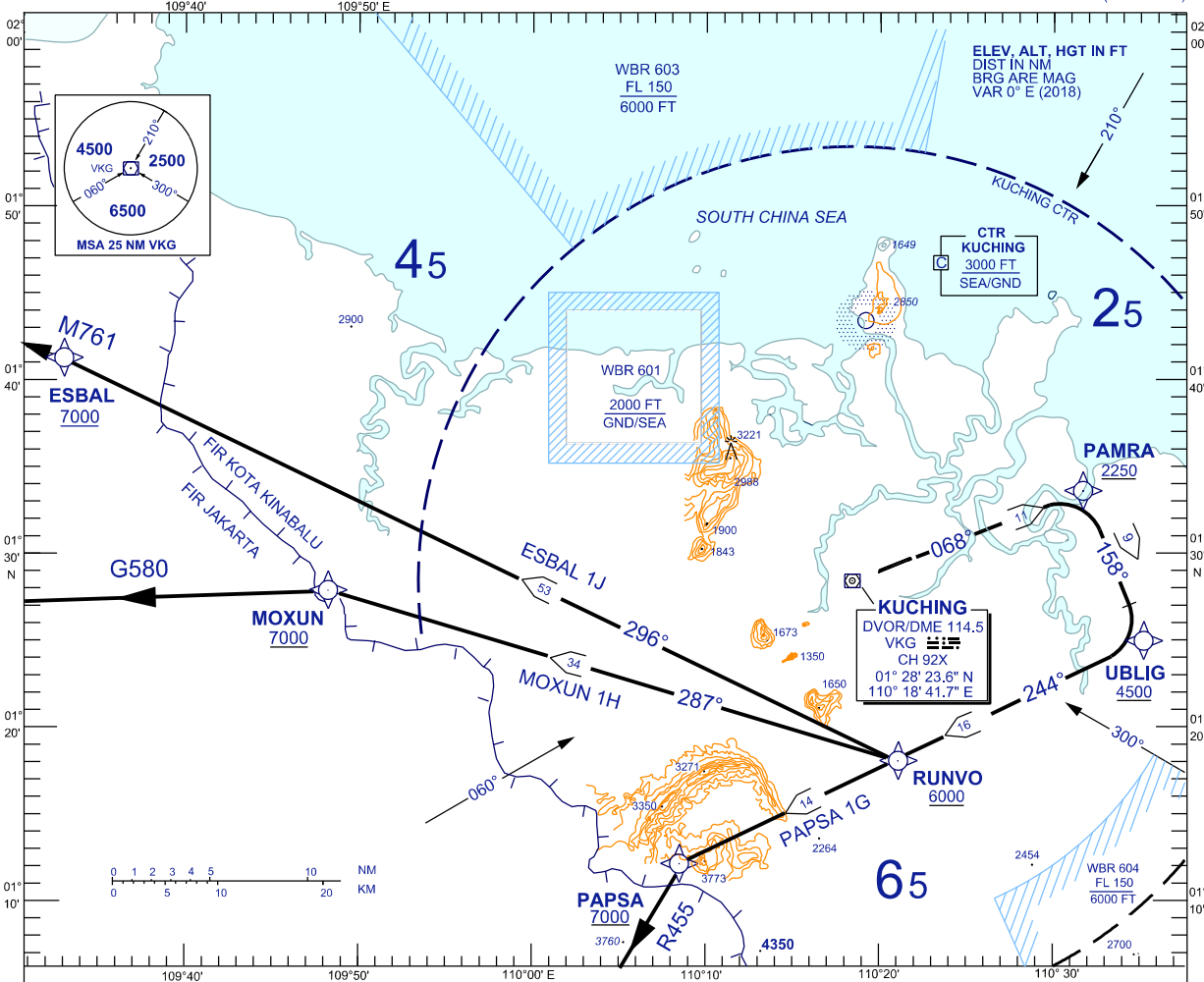
**KUCHING/KUCHING (WBGG)
RWY 07 (RNAV)**

TWR	118.1 (P)	SMC	121.9
	121.7 (S)	ATIS	128.4
APP	120.2 (P)	FIS	134.75
	123.85 (S)		
ACC	134.5 (P)		
	125.35 (S)		

TRANSITION ALTITUDE
11,000 FT

BANK ANGLE : 15° ACHEIVED

PAPSA 1G MOXUN 1H ESBAL 1J
DEP (VIA RUNVO)



RWY 07 (RIGHT TURN)

CLIMB ON TRACK TO PAMRA, THEN TURN RIGHT,

FOR PAPSA ONE GOLF DEPARTURE

TRACK VIA UBLIG, THEN TRACK (VIA RUNVO) TO PAPSA

FOR MOXUN ONE HOTEL DEPARTURE

TRACK VIA UBLIG, THEN TRACK VIA RUNVO TO MOXUN

FOR ESBAL ONE JULIET DEPARTURE

TRACK VIA UBLIG, THEN TRACK VIA RUNVO TO ESBAL

VERTICAL RESTRICTIONS :

ADHERE TO VERTICAL RESTRICTIONS eg . 7000 = NOT BELOW 7000 FT ON CLIMB UNLESS SPECIFICALLY CANCELLED BY ATC

COMMUNICATION FAILURE :

- SQUAWK 7600
- IF UNDER PILOT NAVIGATION, MAINTAIN LAST ASSIGNED LEVEL FOR 3 MINUTES, IF NO ONWARD CLEARANCE IS RECEIVED, SUBSEQUENTLY CLIMB TO COMPLY WITH SID.
- IF UNDER RADAR VECTORED : MAINTAIN VECTOR FOR 2 MINUTES, IF BELOW MSA, CLIMB TO MSA, THEN TRACK TO INTERCEPT CLEARED OR PREVIOUSLY ASSIGNED SID TO DESTINATION