

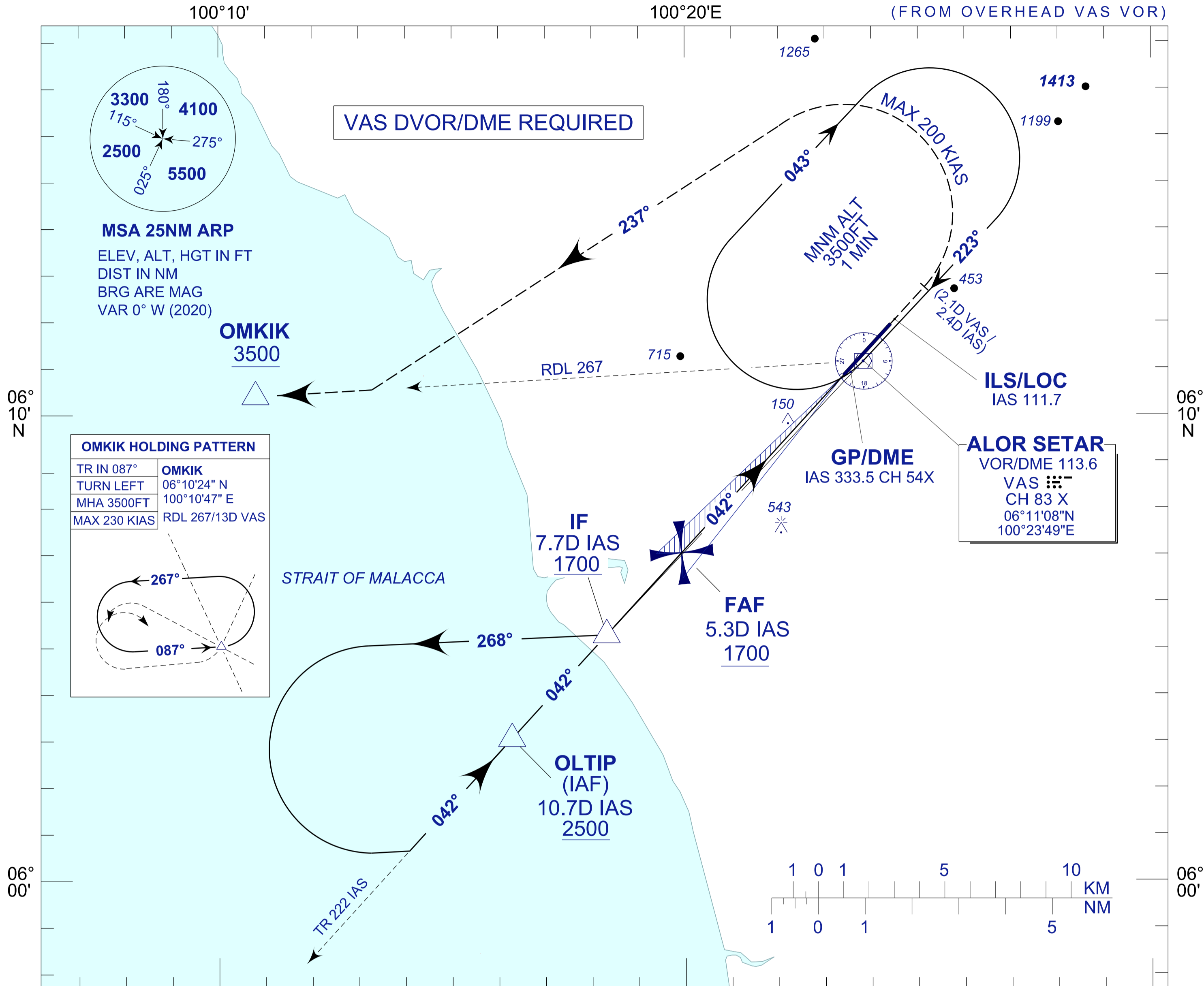
**INSTRUMENT
APPROACH
CHART - ICAO**

**AERODROME ELEV 14 FT
HEIGHTS RELATED TO
THR RWY 04 - ELEV 12 FT**

TWR/APP	122.3
	121.5
	258.2
SMC	121.6
ATIS	128.65

**ALOR SETAR/
SULTAN ABDUL HALIM (WMKA)
ILS Y OR LOC Y RWY 04**

(FROM OVERHEAD VAS VOR)

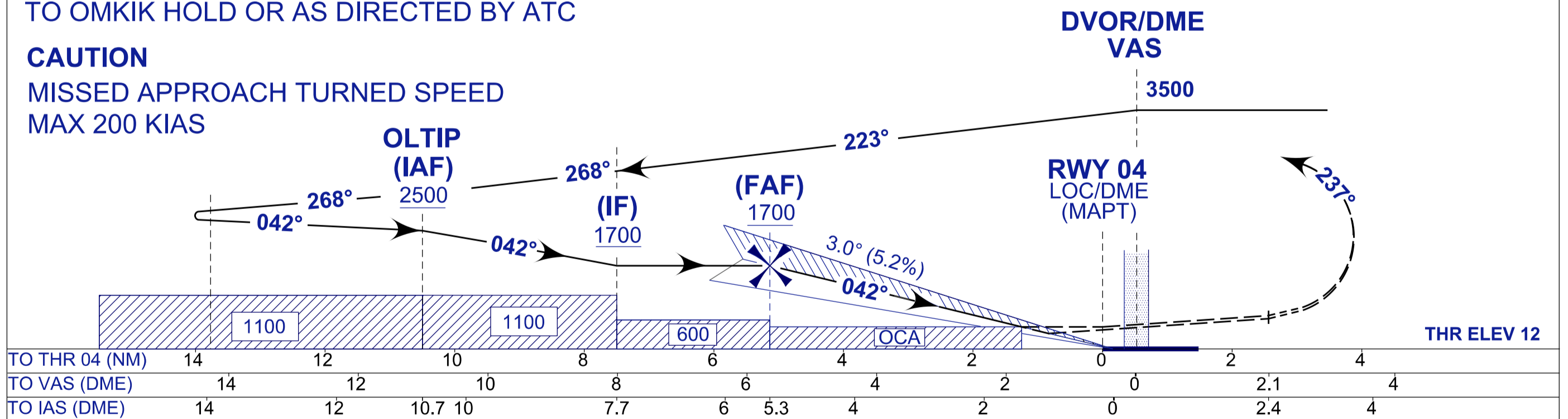


MISSED APPROACH

CLIMB ON TR 042° TO 3500 FT. ON PASSING 2.1 DME VAS OR 2.4 DME IAS TURN LEFT TR 237° TO INTERCEPT RDL 267 TO OMKIK HOLD OR AS DIRECTED BY ATC

CAUTION

MISSED APPROACH TURNED SPEED
MAX 200 KIAS



OCA (OCH)	A	B	C	D
ILS/DME (CAT I)	299 (287)	311 (299)	318 (306)	328 (316)
LOC/DME	460 (448)			

DIST IAS DME	NM	5.3	5.0	4.0	3.0	2.0	1.3
DIST THR/RWY 04	NM	5.1	4.8	3.8	2.8	1.8	1.1
ALTITUDE	FT	1700	1605	1286	968	649	426

GS	KT	80	100	120	140	160	180
FAF - RWY04 (5.1NM)	MIN:SEC	3:52	3:06	2:35	2:13	1:56	1:43
RATE OF DESCEND (318.6 FT/NM)	FT/MIN	420	530	630	740	840	950

CHANGES : AERODROME ELEVATION