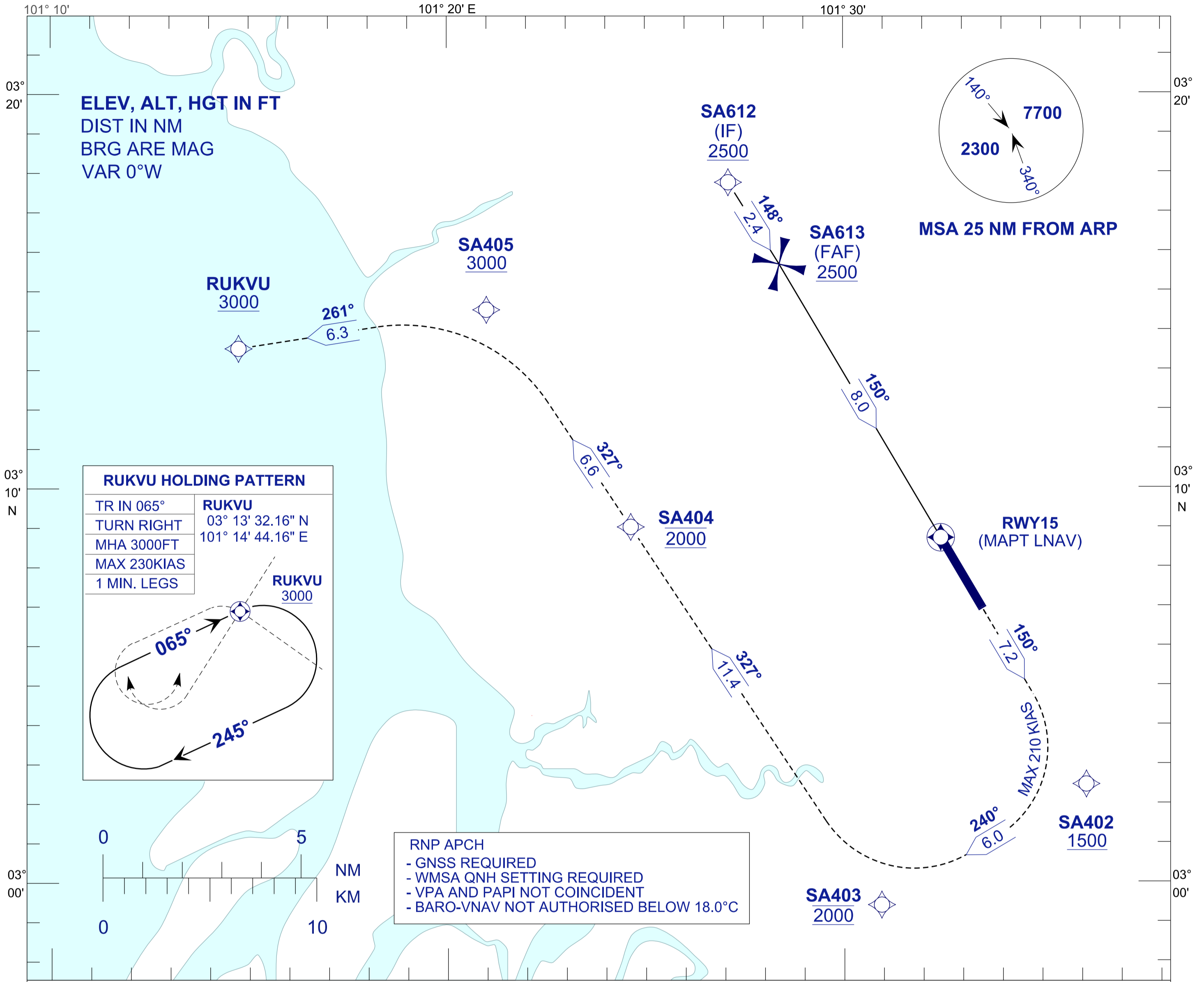


**INSTRUMENT
APPROACH
CHART - ICAO**

AERODROME ELEV 89FT
HEIGHT RELATED TO
THR RWY 15 - ELEV 71FT

APP	118.65	ACD	120.45
	124.20	SMC	121.90
	135.25	TWR	118.20
FIS	126.10	ATIS	127.60

**SUBANG/SULTAN ABDUL
AZIZ SHAH (WMSA)
RNP Y RWY 15**



RUKVU HOLDING PATTERN

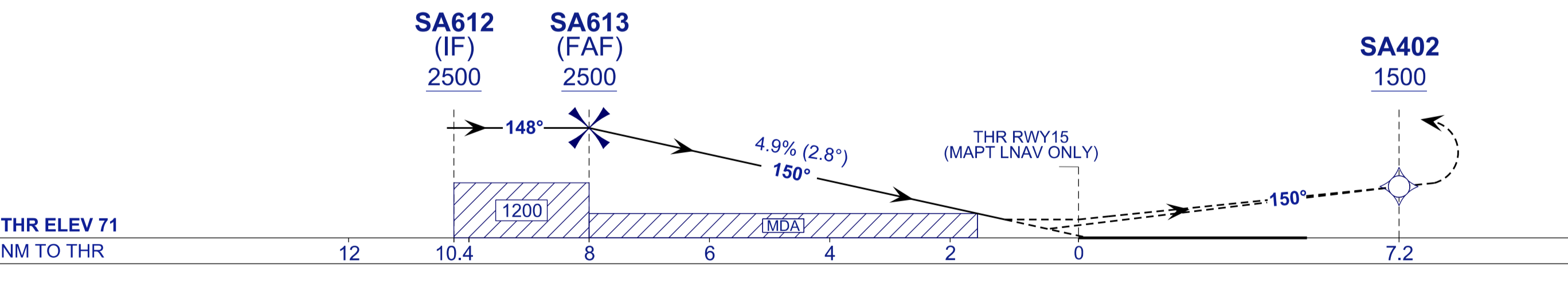
TR IN 065°	RUKVU
TURN RIGHT	03° 13' 32.16" N
MHA 3000FT	101° 14' 44.16" E
MAX 230KIAS	
1 MIN. LEGS	

RNP APCH
- GNSS REQUIRED
- WMSA QNH SETTING REQUIRED
- VPA AND PAPI NOT COINCIDENT
- BARO-VNAV NOT AUTHORISED BELOW 18.0°C

TRANSITION LEVEL FL 130
TRANSITION ALT 11,000 FT

TCH 52 FT

MISSED APPROACH:
CLIMB TO 3000FT OR ABOVE ON TR 150°, CROSS SA402 AT 1500FT OR ABOVE THEN TURN RIGHT TO SA403 AT 2000FT AND MAXIMUM TURN SPEED 210KIAS, TO SA404 AT 2000FT THEN TO SA405 AT 3000FT OR ABOVE AND TURN RIGHT TO RUKVU AND HOLD, OR AS DIRECTED BY ATC.



					ALTITUDE /HEIGHT ON FINAL APPROACH												
OCA (OCH)					A	B	C	D	DIST THR RWY15 (NM)	8.0	7.0	6.0	5.0	4.0	3.0	2.0	1.0
STRAIGHT IN APPROACH	LNAV				600(529)				ALTITUDE (FT)								
	LNAV/VNAV				560(489)				2500 2214 1917 1620 1323 1026 719 422								
GROUND SPEED (KT)					80 100 120 140 160 180												
SA613 - THR15(8.0NM) (MIN:SEC)					6:00 4:48 4:00 3:26 3:00 2:40												
RATE OF DESCEND (4.9%) (FT/MIN)					400 500 590 650 790 890												

CHANGES : IN PROFILE VIEW, CHANGE LNAV AND LNAV/VNAV VALUE