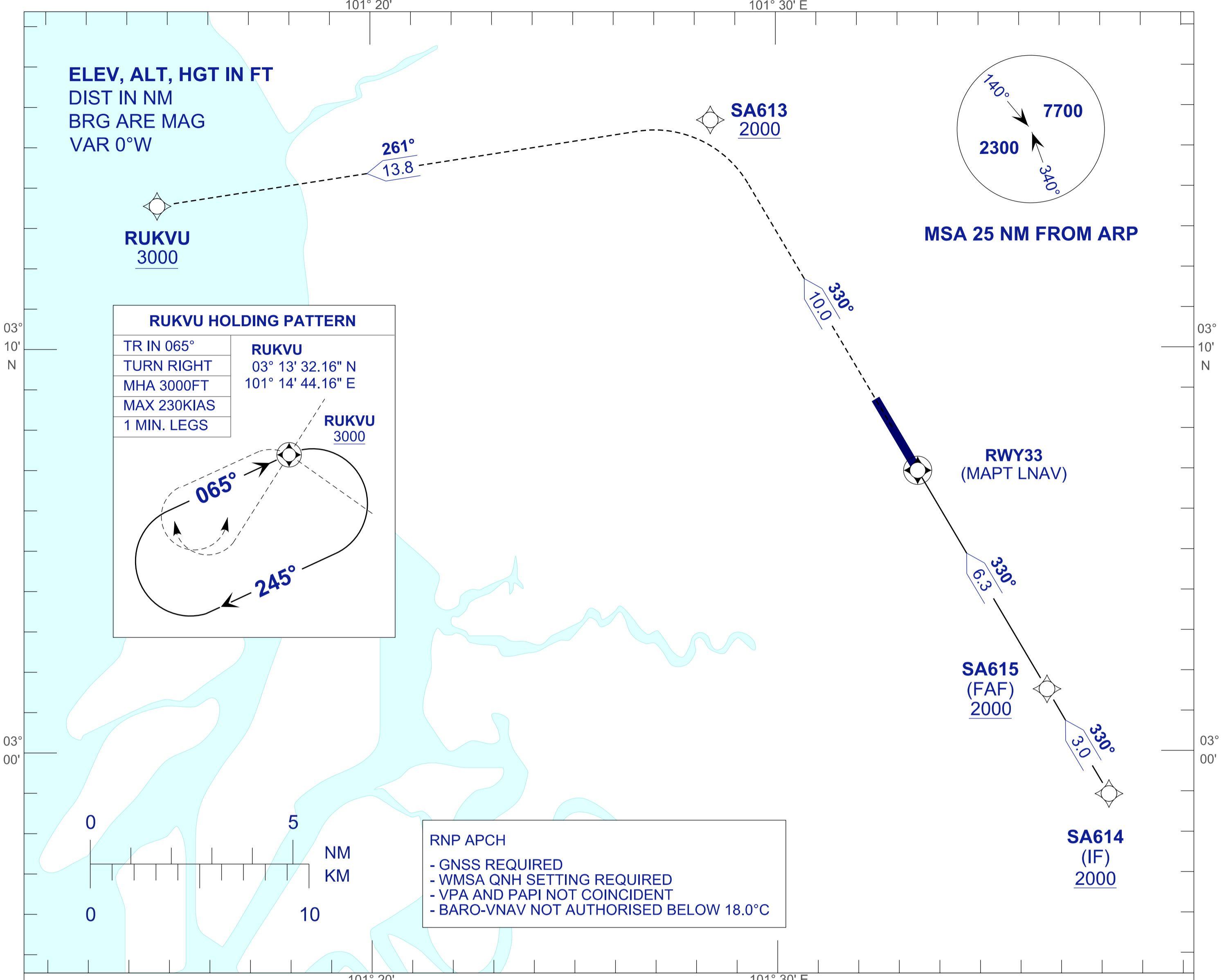


**INSTRUMENT  
APPROACH  
CHART - ICAO**

**AERODROME ELEV 89FT**  
HEIGHT RELATED TO  
THR RWY 33 - ELEV 89FT

APP	118.65	ACD	120.45
	124.20	SMC	121.90
	135.25	TWR	118.20
FIS	126.10	ATIS	127.60

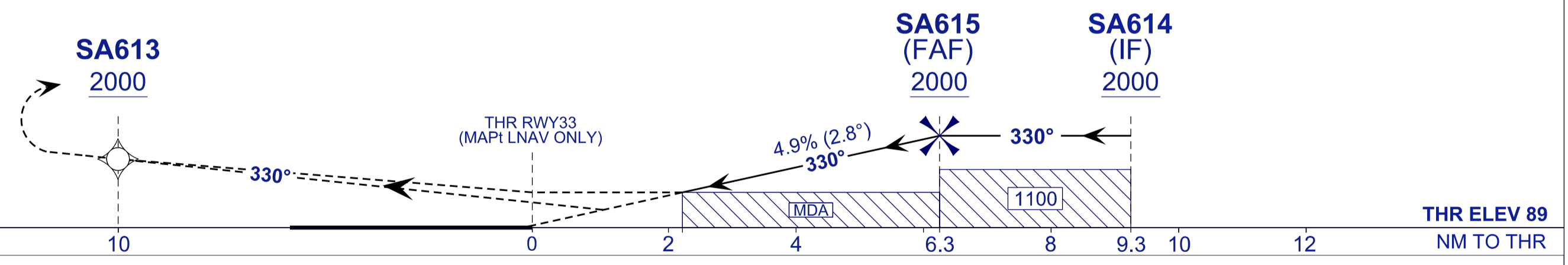
**SUBANG/SULTAN ABDUL  
AZIZ SHAH (WMSA)  
RNP Y RWY 33**



**RNP APCH**  
- GNSS REQUIRED  
- WMSA QNH SETTING REQUIRED  
- VPA AND PAPI NOT COINCIDENT  
- BARO-VNAV NOT AUTHORISED BELOW 18.0°C

TRANSITION LEVEL FL 130  
TRANSITION ALT 11,000 FT  
  
TCH 56 FT

**MISSED APPROACH:**  
CLIMB TO 3000FT OR ABOVE ON TR 330°, CROSS SA617 AT 2000FT OR ABOVE, THEN TURN LEFT TO RUKVU AND HOLD, OR AS DIRECTED BY ATC.



OCA (OCH)		A	B	C	D
STRAIGHT IN APPROACH	LNAV	780(691)			
	LNAV/VNAV	399(310)			

ALTITUDE /HEIGHT ON FINAL APPROACH							
DIST THR RWY33 (NM)	6.3	5.3	4.3	3.3	2.3	1.3	0.2
ALTITUDE (FT)	2000	1703	1406	1108	811	514	199
GROUND SPEED (KT)	80	100	120	140	160	180	
FAR33 - THR33(6.3NM) (MIN:SEC)	4:42	3:45	3:08	2:41	2:21	2:05	
RATE OF DESCEND (4.9%) (FT/MIN)	400	500	590	650	790	890	

**CHANGES :** IN PROFILE VIEW, CHANGE LNAV AND LNAV/VNAV VALUE