

**STANDARD DEPARTURE CHART
INSTRUMENT (SID) - ICAO**

TRANSITION ALT 11000 FT

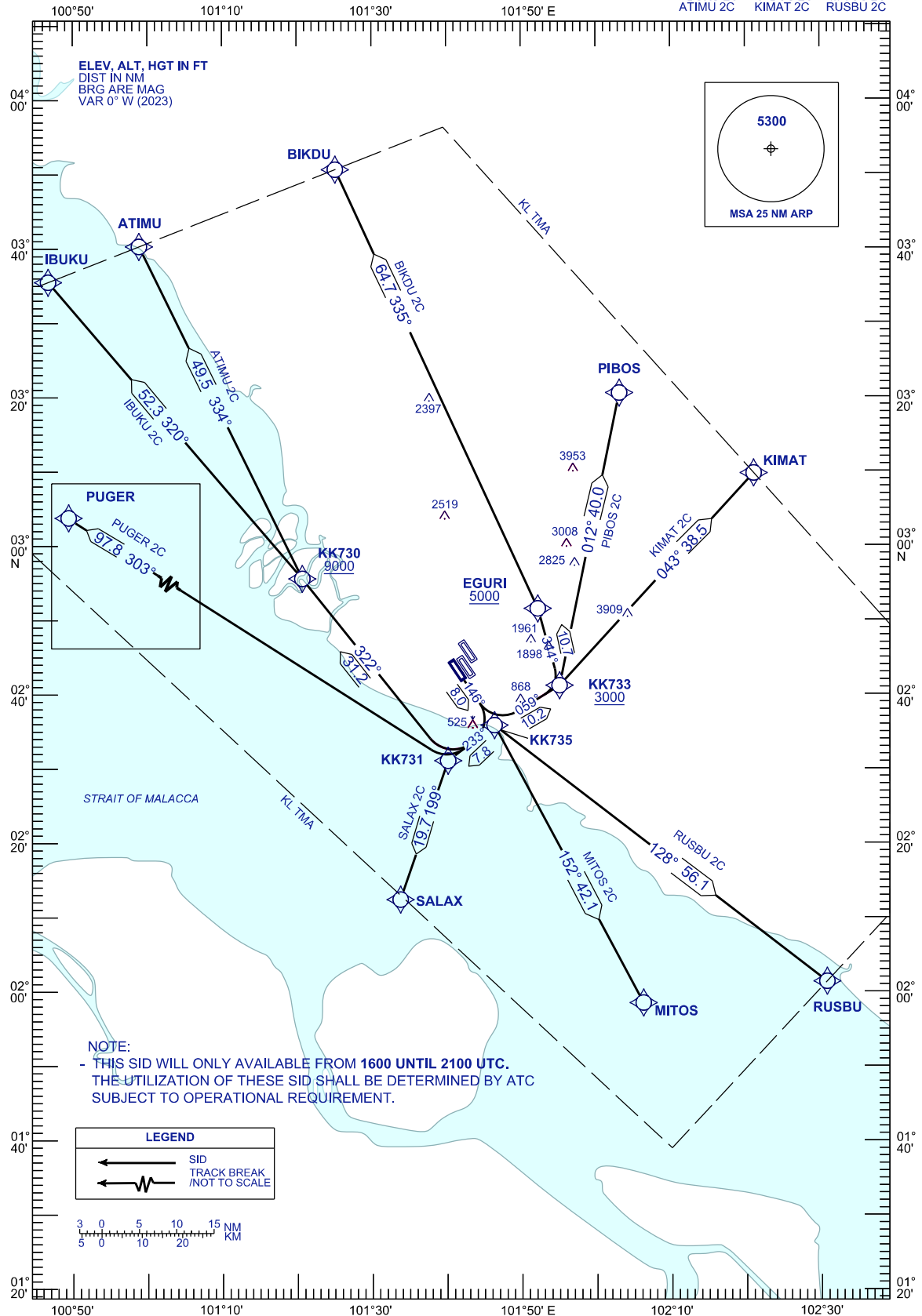
APP	121.250	TWR	119.800
	124.200		GND
	118.650	ATIS	
	125.850		
	135.750		

**SEPANG/KL INTERNATIONAL
AIRPORT (WMKK)
RNP 1 (GNSS) RWY 15**

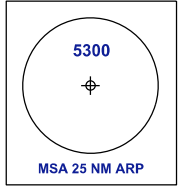
PUGER 2C
IBUKU 2C
ATIMU 2C

BIKDU 2C
PIBOS 2C
KIMAT 2C

SALAX 2C
MITOS 2C
RUSBU 2C



ELEV, ALT, HGT IN FT
DIST IN NM
BRG ARE MAG
VAR 0° W (2023)



NOTE:
- THIS SID WILL ONLY AVAILABLE FROM 1600 UNTIL 2100 UTC.
THE UTILIZATION OF THESE SID SHALL BE DETERMINED BY ATC
SUBJECT TO OPERATIONAL REQUIREMENT.

LEGEND

- ← SID
- TRACK BREAK
- ⚡ NOT TO SCALE

