

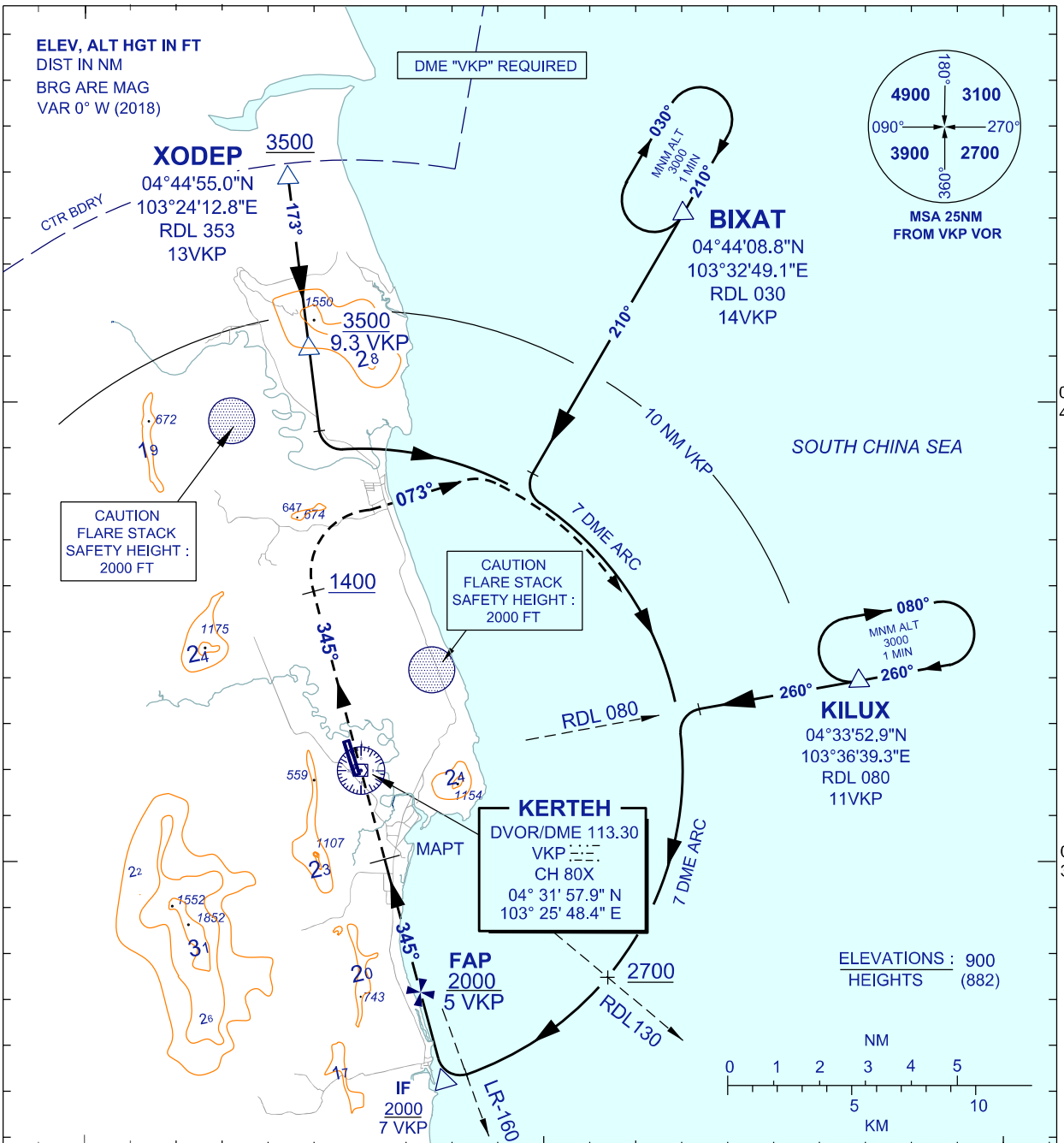
# INSTRUMENT APPROACH CHART - ICAO

AERODROME ELEV 18 FT  
 HEIGHTS RELATED TO  
 THR RWY 34 - ELEV 18 FT

TWR 123.3  
 258.5  
 SMC 121.8  
 ATIS 128.25

**KERTEH/KERTEH (WMKE)  
 RWY 34**

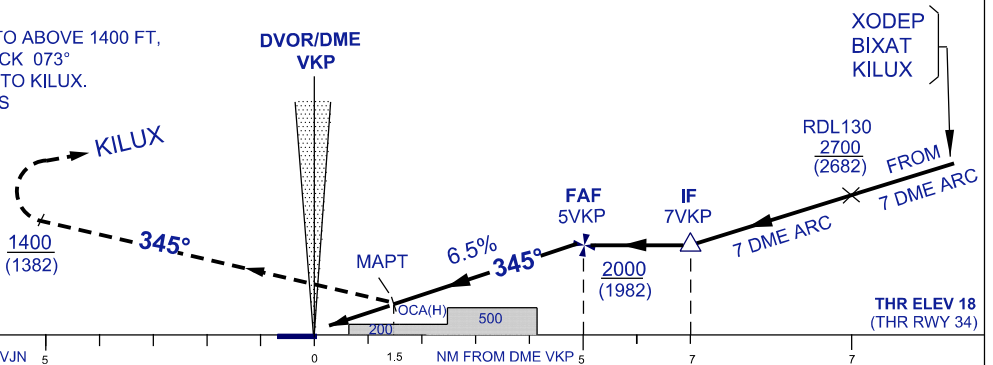
VOR X  
 CAT H



TRANSITION ALT 11000

DIST BY DME (VKP)	5	4	3	2	1.5
ALT 6.5% APCH PATH (FT)	2000 (1982)	1605 (1587)	1210 (1192)	815 (797)	610 (592)

**MISSED APPROACH**  
 CLIMB ON TRACK 345° TO ABOVE 1400 FT,  
 THEN TURN RIGHT, TRACK 073°  
 TO FLY ON 7 DME ARC TO KILUX.  
 CLIMB TO 3000 FT, OR AS  
 DIRECTED BY ATC



OCA (H) FT		CAT H
STRAIGHT-IN APPROACH	VOR / DME	610 (592) / 1.5 DME VKP
CIRCLING / MNM VIS (NM)		CIRCLING NOT PERMITTED

GROUND SPEED (KT)		70	90	110
FAF - MAPT = 3.5 NM	MIN : SEC	3.00	2:20	1:55
RATE OF DESCENT (6.5%)	FT/ MIN	463	595	726

CHANGES : UPDATING THE CHART FORMAT