

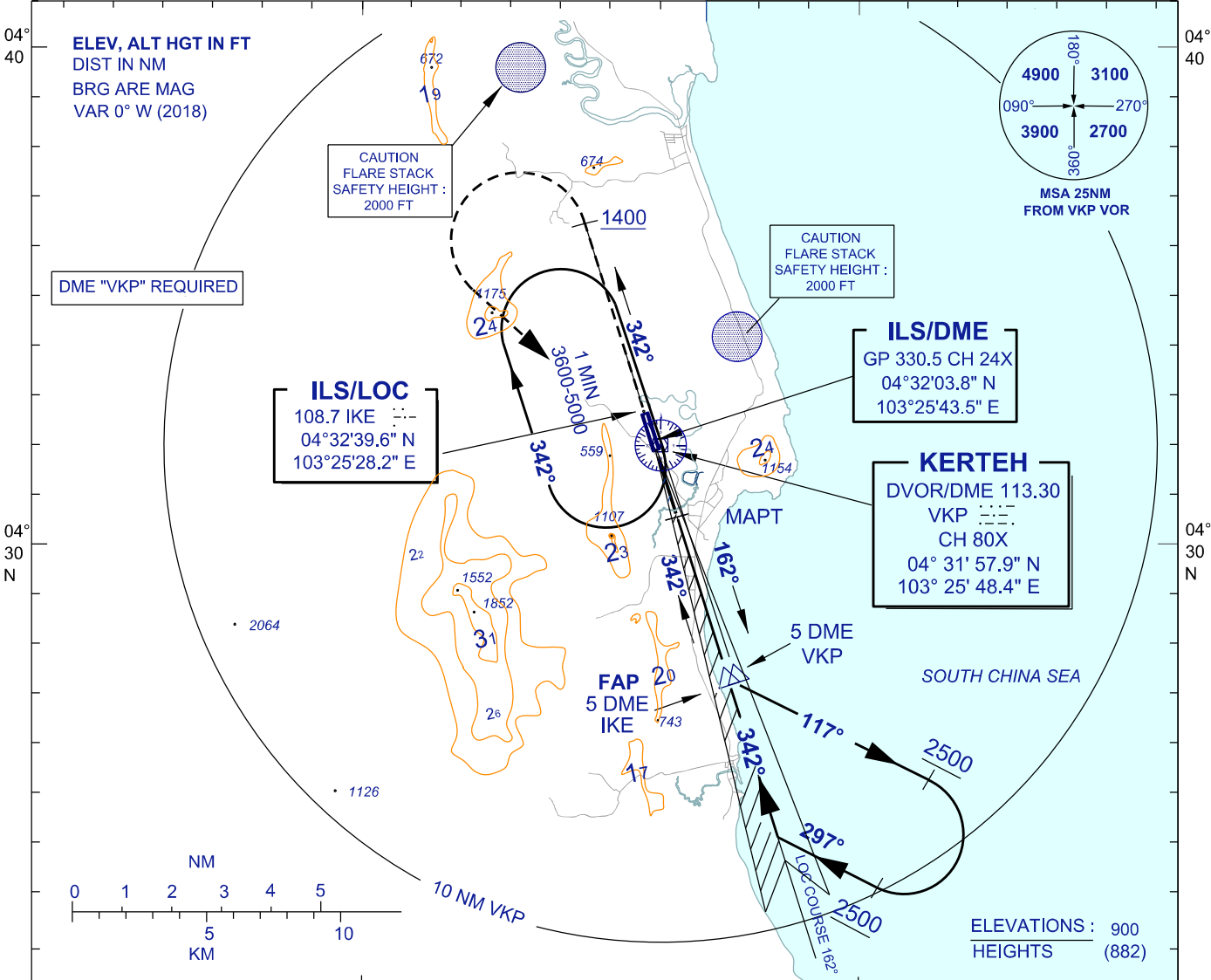
INSTRUMENT APPROACH CHART - ICAO

AERODROME ELEV 18 FT
HEIGHTS RELATED TO
THR RWY 34 - ELEV 18 FT

TWR 123.3
258.5
SMC 121.8
ATIS 128.25

KERTEH/KERTEH (WMKE) RWY 34

ILS Y OR LOC Y

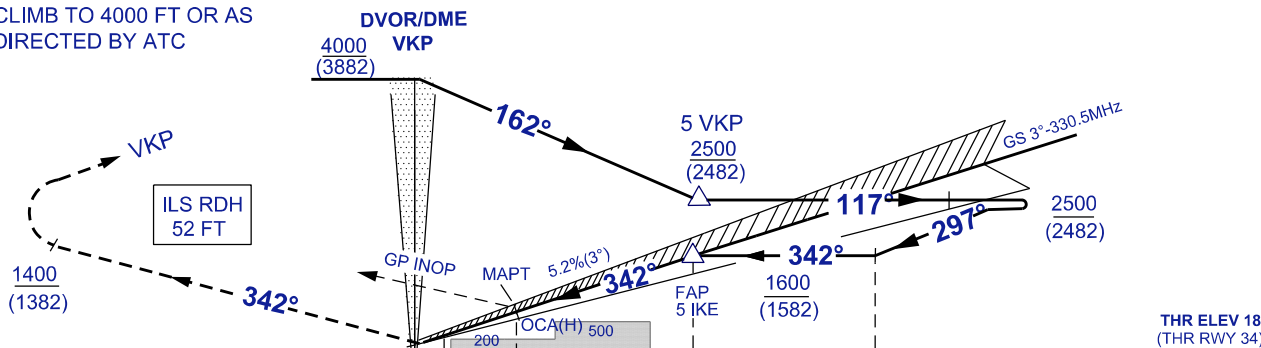


TRANSITION ALT 11000

DIST BY DME (IKE)	5	4	3	1.9
ALT 3° APCH PATH (FT)	1600 (1582)	1282 (1264)	964 (946)	620 (602)

MISSED APPROACH

CLIMB ON TRACK 342° TO 1400 FT
TURN LEFT TRACK TO VKP HOLD
CLIMB TO 4000 FT OR AS
DIRECTED BY ATC



NM FROM DME IKE

NM FROM DME VKP

NM FROM DME IKE

NM FROM DME VKP

OCA (H) FT		A	B
STRAIGHT-IN APPROACH	CAT 1	300 (282)	310 (292)
	LOC	620 (602) / 1.9 DME	
CIRCLING/MNM VIS (NM)		CIRCLING NOT PERMITTED	

GROUND SPEED(KT)		70	90	110	140
FAP - MAPT = 3.1 NM	MIN : SEC	2:35	2:04	1:50	1:20
RATE OF DESCENT (3°)	FT/ MIN	379	474	535	738