

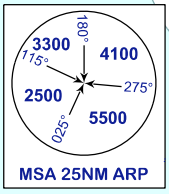
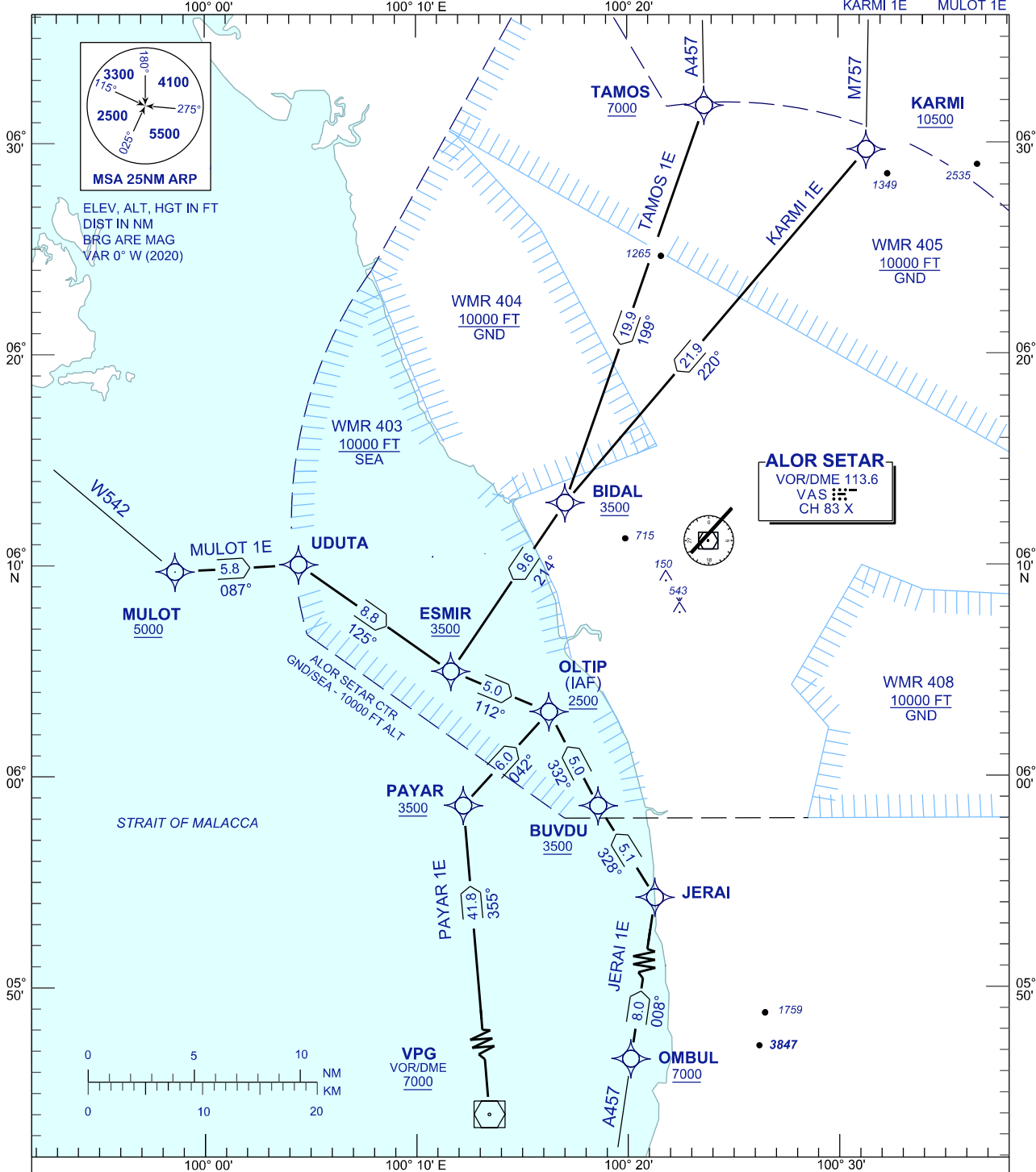
**STANDARD ARRIVAL CHART
INSTRUMENT (STAR) - ICAO**

TWR/APP	122.3, 258.2
TRAINING	121.5
SMC	129.1
ATIS	121.6
	128.65

**ALOR SETAR/
SULTAN ABDUL HALIM (WMKA)
RNAV (GNSS) RWY 04**

TRANSITION ALTITUDE
11000 FT

PAYAR 1E JERAI 1E TAMOS 1E
KARMI 1E MULOT 1E



ALOR SETAR
VOR/DME 113.6
VAS CH 83 X

COMMUNICATION FAILURE :

- SQUAWK 7600
- IF UNDER PILOT NAVIGATION, MAINTAIN LAST ASSIGNED LEVEL FOR 3 MINUTES, IF NO ONWARD CLEARANCE IS RECEIVED, SUBSEQUENTLY CLIMB/DESCEND TO COMPLY WITH STAR AND LAND.
- IF UNDER RADAR VECTORED : MAINTAIN VECTOR FOR 1 MINUTES, IF BELOW MSA, CLIMB TO MSA, THEN TRACK TO INTERCEPT CLEARED OR PREVIOUSLY ASSIGNED STAR AND LAND.

CHANGES : MAGNETIC VARIATION