

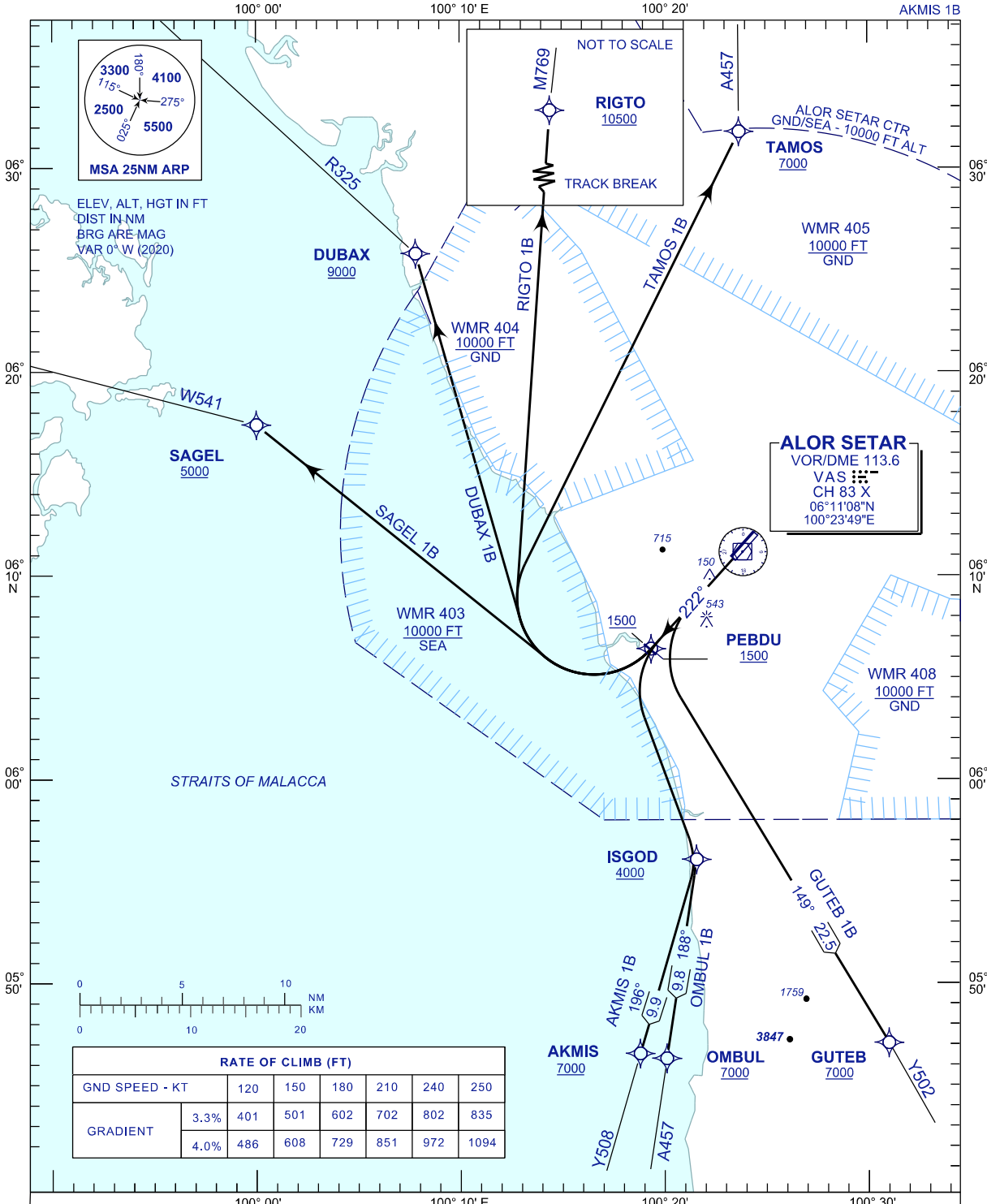
STANDARD DEPARTURE CHART INSTRUMENT (SID) - ICAO

TRANSITION ALTITUDE
11000 FT

TWR/APP	122.3, 258.2
TRAINING	121.5
SMC	129.1
ATIS	121.6
	128.65

ALOR SETAR/ SULTAN ABDUL HALIM (WMKA) RNAV (GNSS) RWY22

TAMOS 1B RIGTO 1B DUBAX 1B
SAGEL 1B GUTEB 1B OMBUL 1B
AKMIS 1B



COMMUNICATION FAILURE :
 SQUAWK 7600
 • IF UNDER PILOT NAVIGATION, MAINTAIN LAST ASSIGNED LEVEL FOR 3 MINUTES, IF NO ONWARD CLEARANCE IS RECEIVED, SUBSEQUENTLY CLIMB TO COMPLY WITH SID.
 • IF UNDER RADAR VECTORED : MAINTAIN VECTOR FOR 2 MINUTES, IF BELOW MSA, CLIMB TO MSA, THEN TRACK TO INTERCEPT CLEARED OR PREVIOUSLY ASSIGNED SID TO DESTINATION.

CHANGES : MAGNETIC VARIATION .