

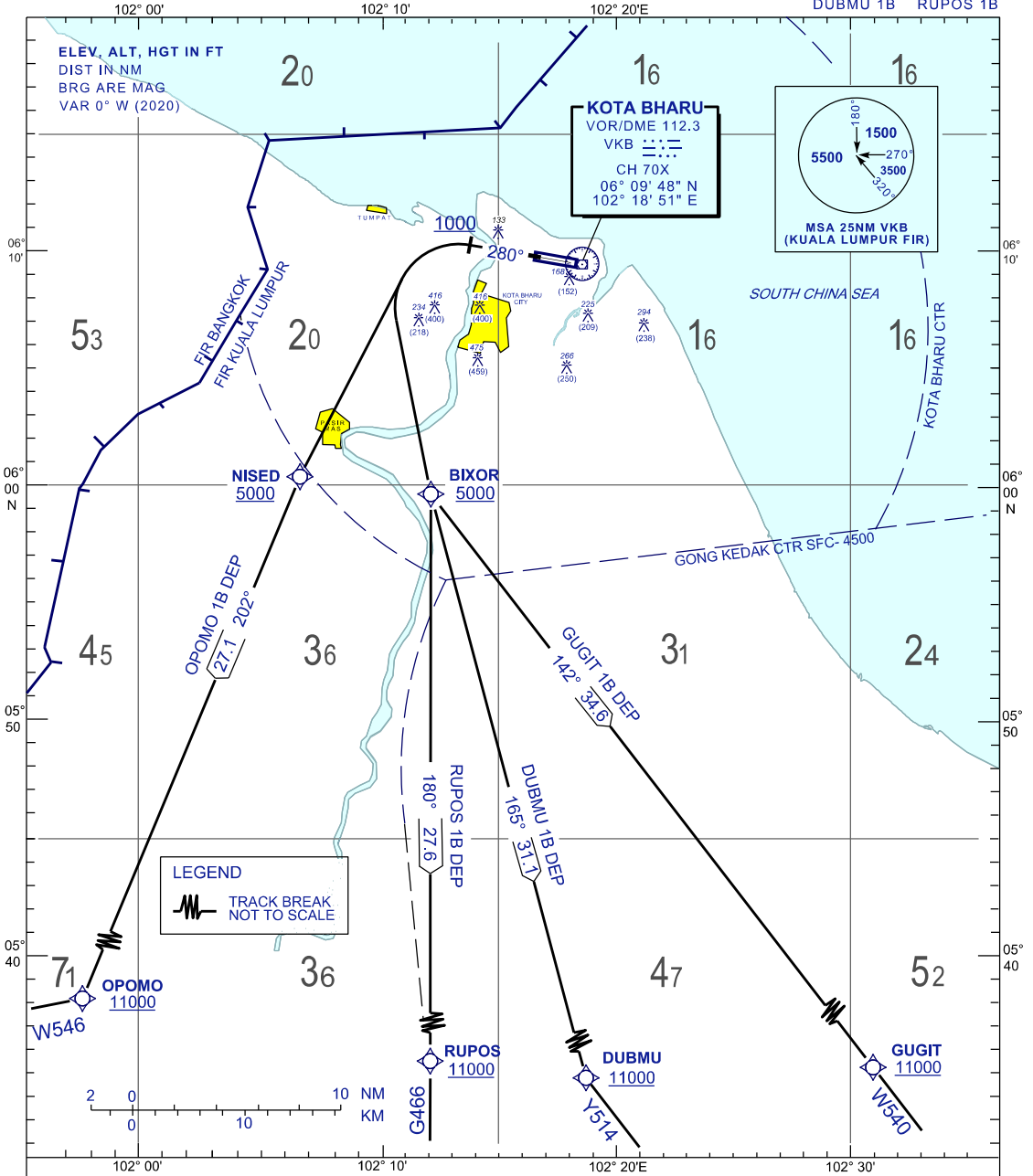
**STANDARD DEPARTURE CHART
INSTRUMENT (SID) - ICAO**

**KOTA BHARU/
SULTAN ISMAIL PETRA (WMKC)
RNAV (GNSS) RWY 28**

TRANSITION ALTITUDE
11 000 FT

APP 120.85,130.3
TWR 122.5
SMC 121.6
ATIS 128.85

OPOMO 1B GUGIT 1B
DUBMU 1B RUPOS 1B



LEGEND
TRACK BREAK
NOT TO SCALE

2 0 10 NM
0 10 KM

RATE OF CLIMB (FT)							
GND SPEED - KT	120	150	180	210	240	270	
GRADIENT	5.2%	632	790	948	1106	1264	1422
	3.3%	401	501	602	702	802	902
	3.6%	437	547	656	766	875	984

COMMUNICATION FAILURE :

- SQUAWK 7600
- IF UNDER PILOT NAVIGATION, MAINTAIN LAST ASSIGNED LEVEL FOR 3 MINUTE, IF NO ONWARD CLEARANCE IS RECEIVED, SUBSEQUENTLY CLIMB TO COMPLY WITH SID.
- IF UNDER RADAR VECTORING, MAINTAIN VECTOR FOR 2 MINUTES
- IF BELOW MSA, CLIMB TO MSA, THEN TRACK TO INTERCEPT CLEARED OR PREVIOUSLY ASSIGNED SID TO DESTINATION.

CHANGES: MAGNETIC VARIATION