

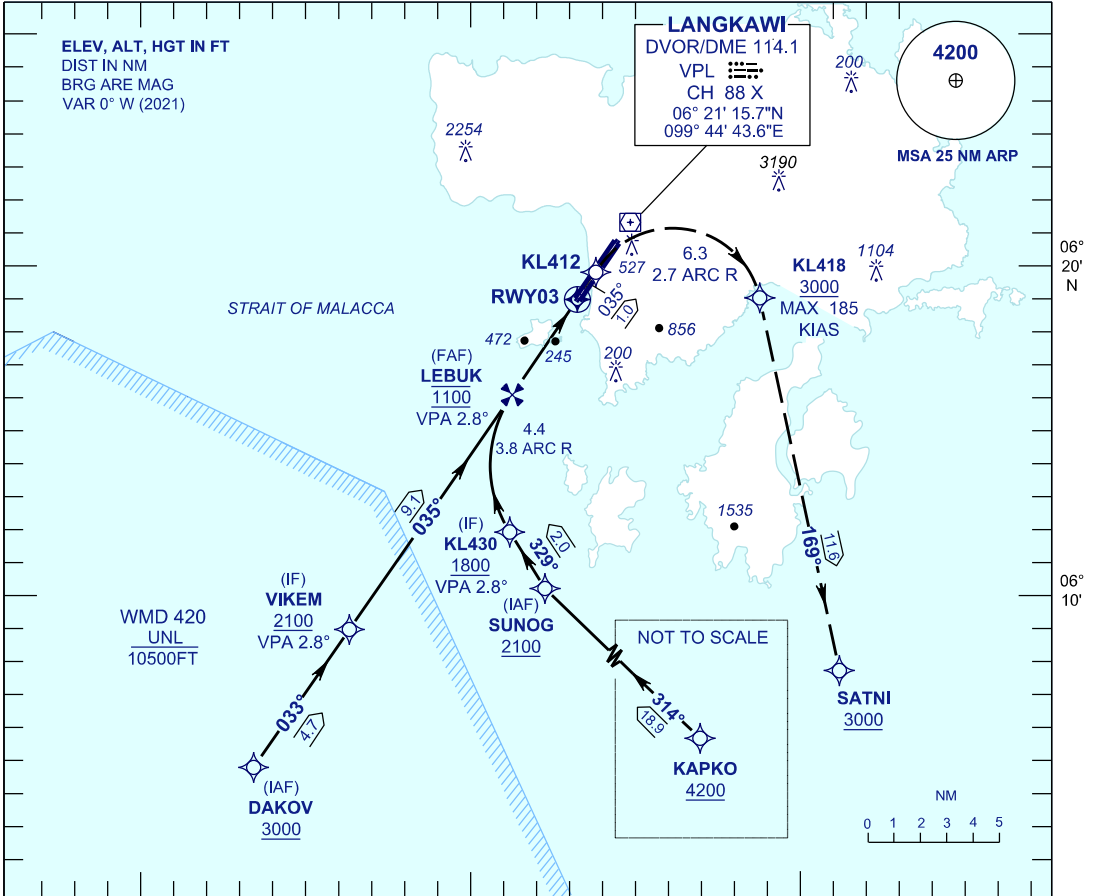
**INSTRUMENT  
APPROACH  
CHART - ICAO**

**AERODROME ELEV 23 FT**  
**HEIGHTS RELATED TO DISP**  
**THR RWY 03 - ELEV 16 FT**

APP	119.4, 257.8
TWR	118.5
SMC	121.8
ATIS	128.2

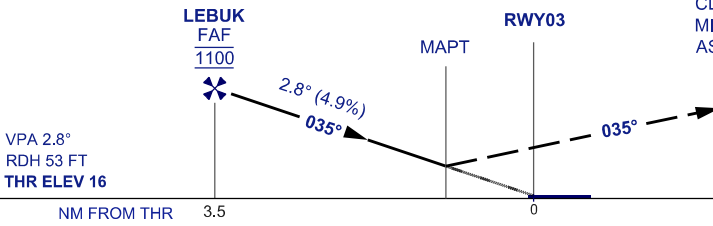
**LANGKAWI/LANGKAWI  
INTERNATIONAL AIRPORT (WMKL)**

**RNP Z RWY 03 (AR)**



TRANSITION LEVEL FL 130  
 TRANSITION ALT 11000

**MISSED APPROACH**  
 CLIMB TO 3000 FT VIA THE RNP  
 MISSED APCH TRACK TO SATNI OR  
 AS DIRECTED BY ATC.



OCA/H		
ACFT CAT.	C	D
RNP 0.3	845 (829)	

GROUND SPEED - KT	70	90	100	120	140	160
RATE OF DESCENT (2.8°) ( FEET/MIN )	347	446	495	594	693	792

DISTANCE TO THRESHOLD (NM)	3.5	3	2	1
ALTITUDE (FEET)	1100	960	670	370

- AUTHORIZATION REQUIRED**
- DUAL GNSS REQUIRED**
- RF REQUIRED**
- APPROACH NOT AUTHORIZED WHEN AIRPORT TEMPERATURE BELOW 19°C OR ABOVE 40°C
- MISSED APPROACH REQUIRES BANK ANGLE OF UP TO 20°
- WMKL ALTIMETER SETTING REQUIRED.
- PAPI AND VERTICAL PATH ANGLE NOT COINCIDENT
- TOGA TO NAV REQUIRED
- PROCEDURE REQUIRES RNP 0.3 FROM IAFS TO SATNI
- MISSED APPROACH TURN PRIOR TO DER

**CHANGES : AERODROME ELEVATION**