

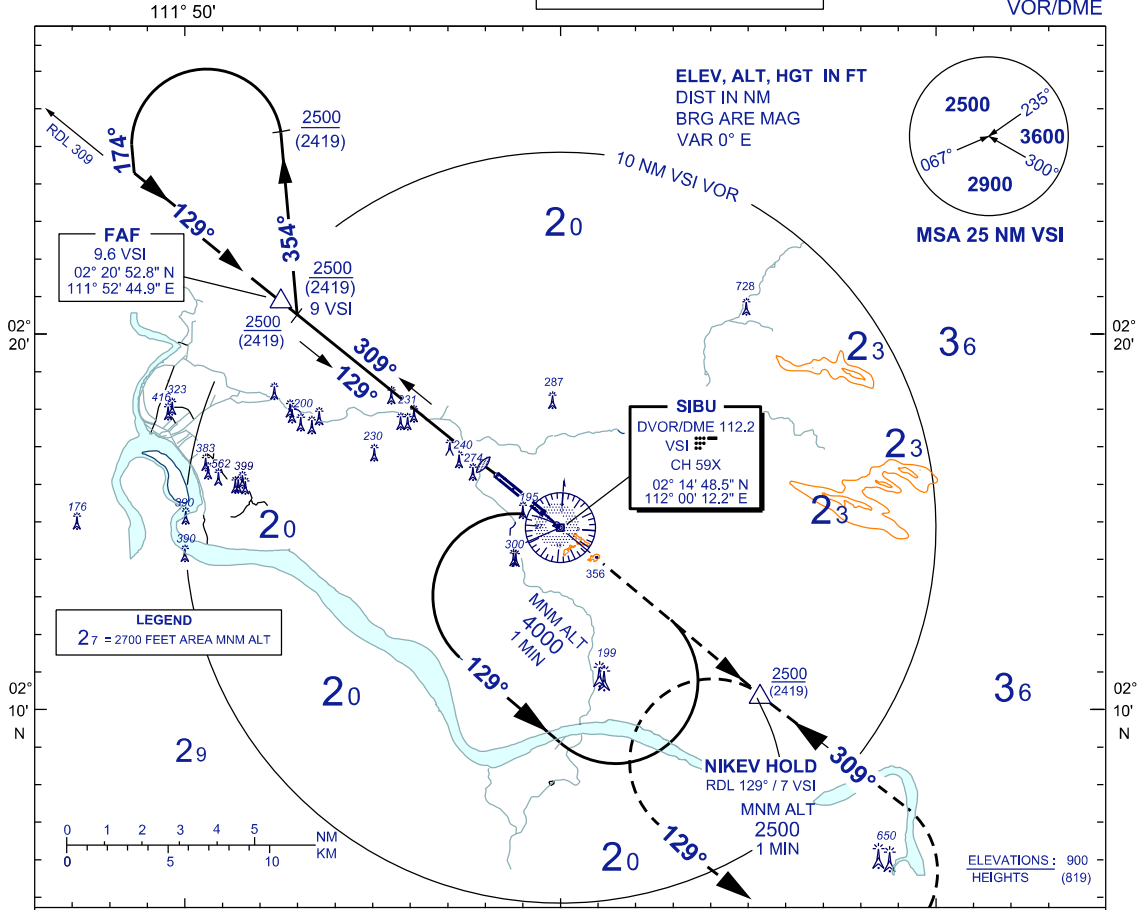
**INSTRUMENT
APPROACH
CHART - ICAO**

**AERODROME ELEV 121 FT
HEIGHT RELATED TO
THR RWY13 - ELEV 81 FT**

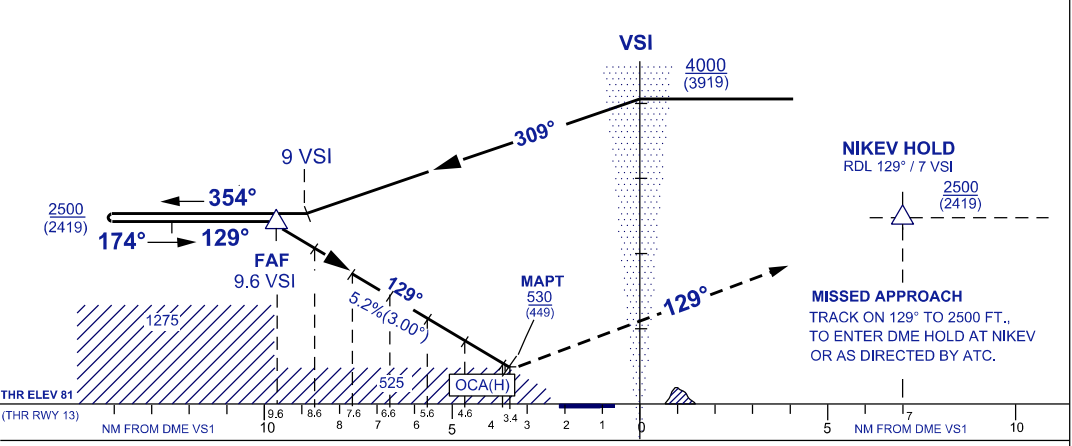
APP	122.6(P), 124.4 (S)
TWR	123.2
SMC	121.9
ATIS	127.65
EMERG	121.5

**SIBU/SIBU (WBG5)
RWY 13**

VOR/DME



	111° 50'	USE QNH	112° 00' E	TRANSITION ALT 11000			
DIST BY DME (NM)	9.6	8.6	7.6	6.6	5.6	4.6	3.4
ALT 3° APCH PATH (FT)	2500 (2419)	2182 (2101)	1864 (1783)	1546 (1465)	1228 (1147)	910 (829)	530 (449)



OCA / H (FT)		A	B	C	D			
STRAIGHT-IN APPROACH	VOR/DME	530 (449) / 3.4 DME VS1		530 (449) / 3.4 DME VS1				
CIRCLING		660 (579)	660 (579)	760 (679)	760 (679)			
GROUND SPEED (KT)		70	90	120	150	180	210	
FAF - MAPT = 6.2NM		MIN : SEC	5:19	4:08	3:06	2:29	2:04	1:46
RATE OF DESCENT (3°)		FT./ MIN	371	476	635	794	953	1113

CHANGES : UPDATING THE CHART FORMAT