

STANDARD ARRIVAL CHART INSTRUMENT (STAR) - ICAO

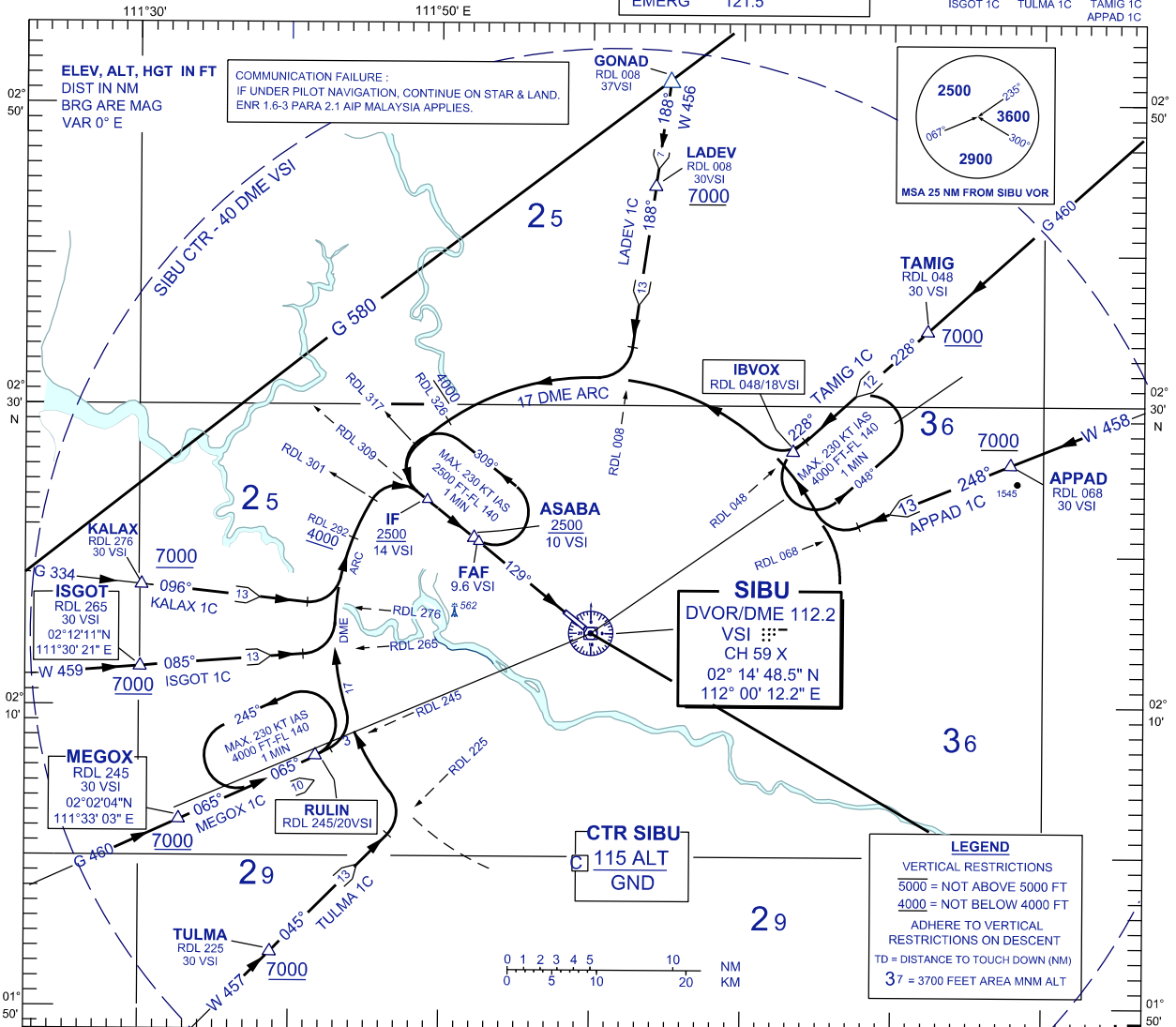
TRANSITION ALTITUDE
11 000 FT

APP 122.6(P), 124.4 (S)
TWR 123.2
SMC 121.9
ATIS 127.65
EMERG 121.5

SIBU/SIBU (WBGS)
RWY 13

VOR/DME ARC

KALAX 1C MEGOX 1C LADEV 1C
ISGOT 1C TULMA 1C TAMIG 1C
APPAD 1C



KALAX ONE CHARLIE ARRIVAL ISGOT ONE CHARLIE ARRIVAL MEGOX ONE CHARLIE ARRIVAL TULMA ONE CHARLIE ARRIVAL

- KALAX ONE CHARLIE ARRIVAL**
- FROM KALAX TRACK ON RDL 276 VSI VOR INBOUND
- ISGOT ONE CHARLIE ARRIVAL**
- FROM ISGOT TRACK ON RDL 265 VSI VOR INBOUND
- MEGOX ONE CHARLIE ARRIVAL / FROM RULIN HOLD**
- FROM MEGOX OR RULIN TRACK ON RDL 245 VSI VOR INBOUND
- TULMA ONE CHARLIE ARRIVAL**
- FROM TULMA TRACK ON RDL 225 VSI VOR INBOUND

- FROM KALAX, ISGOT, MEGOX, RULIN OR TULMA ARRIVAL**
- WHEN APPROPRIATELY POSITIONED, TURN LEFT
 - TO FLY 17 DME ARC VSI
 - ON CROSSING LR-301, TURN RIGHT
 - TO INTERCEPT LOC FOR ILS APPROACH OR RDL 309 FOR VOR/DME APPROACH