

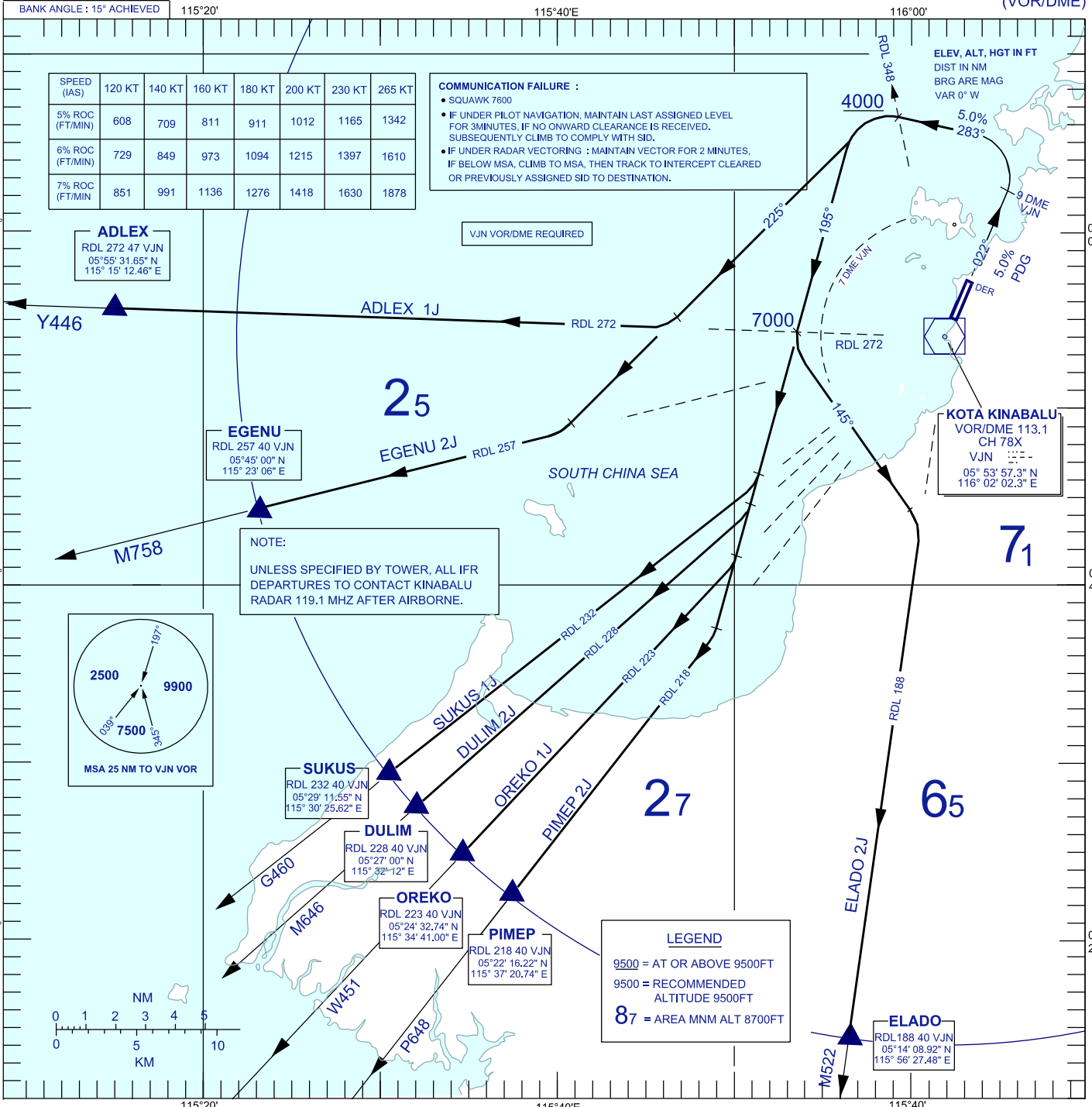
**STANDARD DEPARTURE CHART
INSTRUMENT (SID) - ICAO**

**KOTA KINABALU/KOTA KINABALU
(WBKK)
RWY 02**

TRANSITION ALTITUDE
11,000 FT

APP 119.1
TWR 118.3
GND 121.6
ATIS 127.4

(VOR/DME)



SPEED (IAS)	120 KT	140 KT	160 KT	180 KT	200 KT	230 KT	265 KT
5% ROC (FT/MIN)	608	709	811	911	1012	1165	1342
6% ROC (FT/MIN)	729	849	973	1094	1215	1397	1610
7% ROC (FT/MIN)	851	991	1136	1276	1418	1630	1878

COMMUNICATION FAILURE :

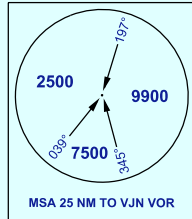
- SQUAWK 7600
- IF UNDER PILOT NAVIGATION, MAINTAIN LAST ASSIGNED LEVEL FOR 3MINUTES, IF NO ONWARD CLEARANCE IS RECEIVED, SUBSEQUENTLY CLIMB TO COMPLY WITH SID.
- IF UNDER RADAR VECTURING : MAINTAIN VECTOR FOR 2 MINUTES, IF BELOW MSA, CLIMB TO MSA, THEN TRACK TO INTERCEPT CLEARED OR PREVIOUSLY ASSIGNED SID TO DESTINATION.

ADLEX
RDL 272 47 VJN
05°55' 31.65" N
115° 15' 12.46" E

VJN VOR/DME REQUIRED

KOTA KINABALU
VOR/DME 113.1
CH 78X
VJN
05° 53' 57.3" N
116° 02' 02.3" E

NOTE:
UNLESS SPECIFIED BY TOWER, ALL IFR DEPARTURES TO CONTACT KINABALU RADAR 119.1 MHZ AFTER AIRBORNE.



LEGEND

9500 = AT OR ABOVE 9500FT
9500 = RECOMMENDED ALTITUDE 9500FT
87 = AREA MNM ALT 8700FT

