

# INSTRUMENT APPROACH CHART - ICAO

AERODROME ELEV 20 FT  
HEIGHT RELATED TO  
THR RWY 33 - ELEV 20 FT

TWR 118.300  
118.425 (S)  
SMC 118.075  
ATIS 126.200

MUKAH/MUKAH (WBGK)

VOR Y RWY 33

112° 00' E

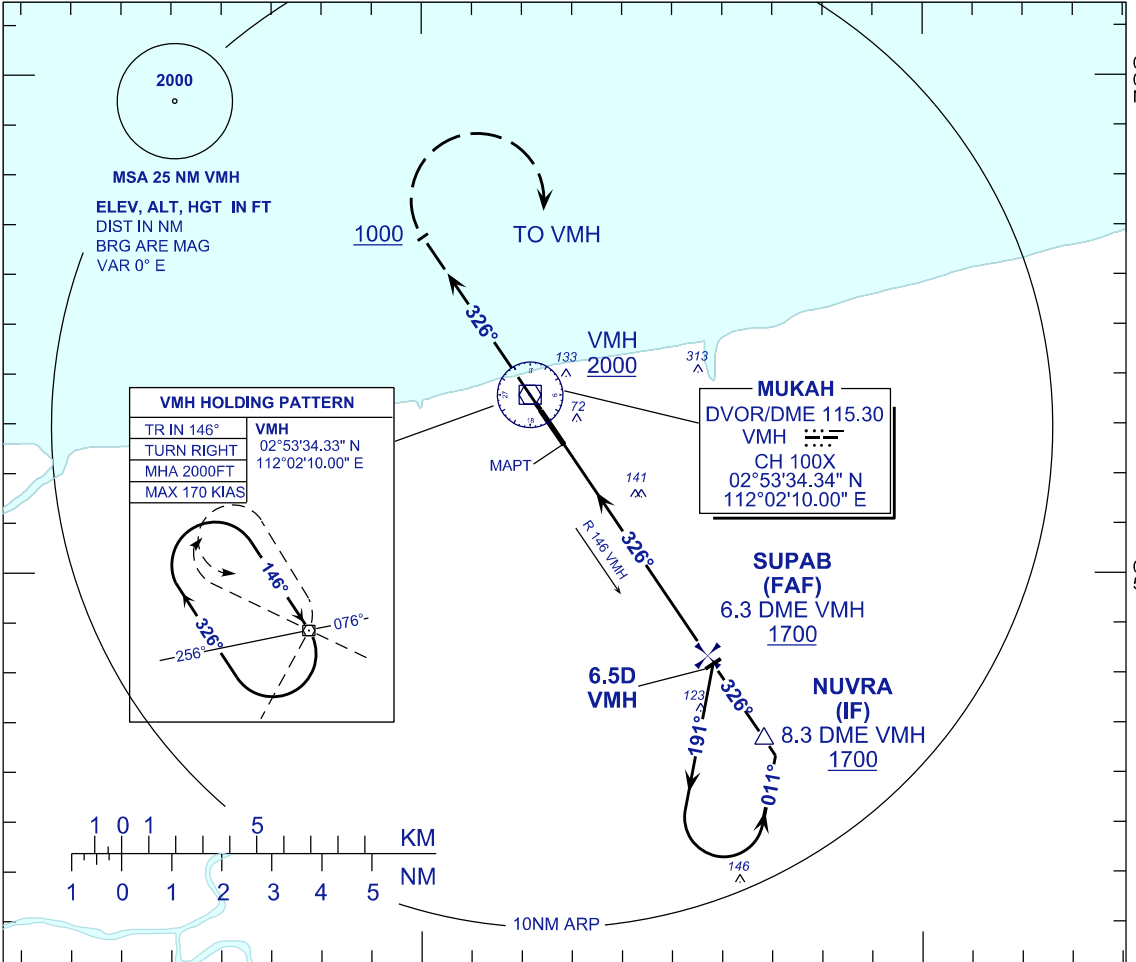
112° 10'

03° 00' N

03° 00' N

02° 50'

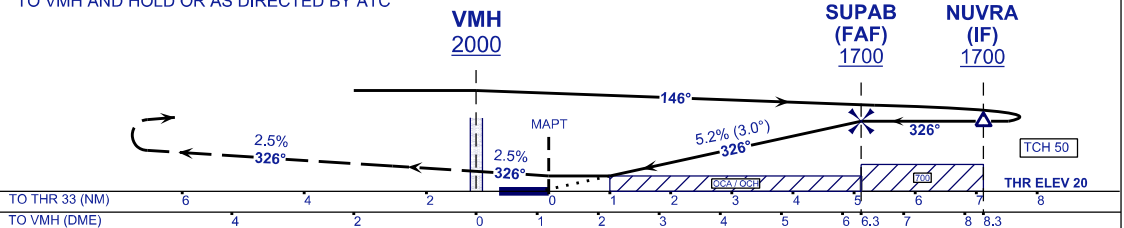
02° 50'



## MISSED APPROACH

AT MAPT CLIMB TO 2000FT OR ABOVE ON  
TR 326° ON PASSING 1000 FT TURN RIGHT  
TO VMH AND HOLD OR AS DIRECTED BY ATC

TRANSITION LEVEL FL130  
TRANSITION ALT 11 000



OCA / OCH	A	B
VOR/DME	390 (370)	
CIRCLING (MNM/VIS)	550 (530) / 1.0	550 (530) / 1.5

DME VMH	NM	6.3	5.3	4.3	3.3	2.3
DIST THR / RWY33	NM	5.1	4.1	3.1	2.1	1.1
ALTITUDE	FT	1700	1376	1057	739	420

GS	KT	80	100	120	140	160	180
FAF -THR RWY33 (5.1NM)	MIN:SEC	3:50	3:04	2:34	2:12	1:55	1:42
RATE OF DESCEND(318.5FT/NM)	FT/MIN	420	530	640	740	850	960

CHANGES : AT VMH HOLDING, READ IAS 170 KT  
TO MAX 170 KIAS