

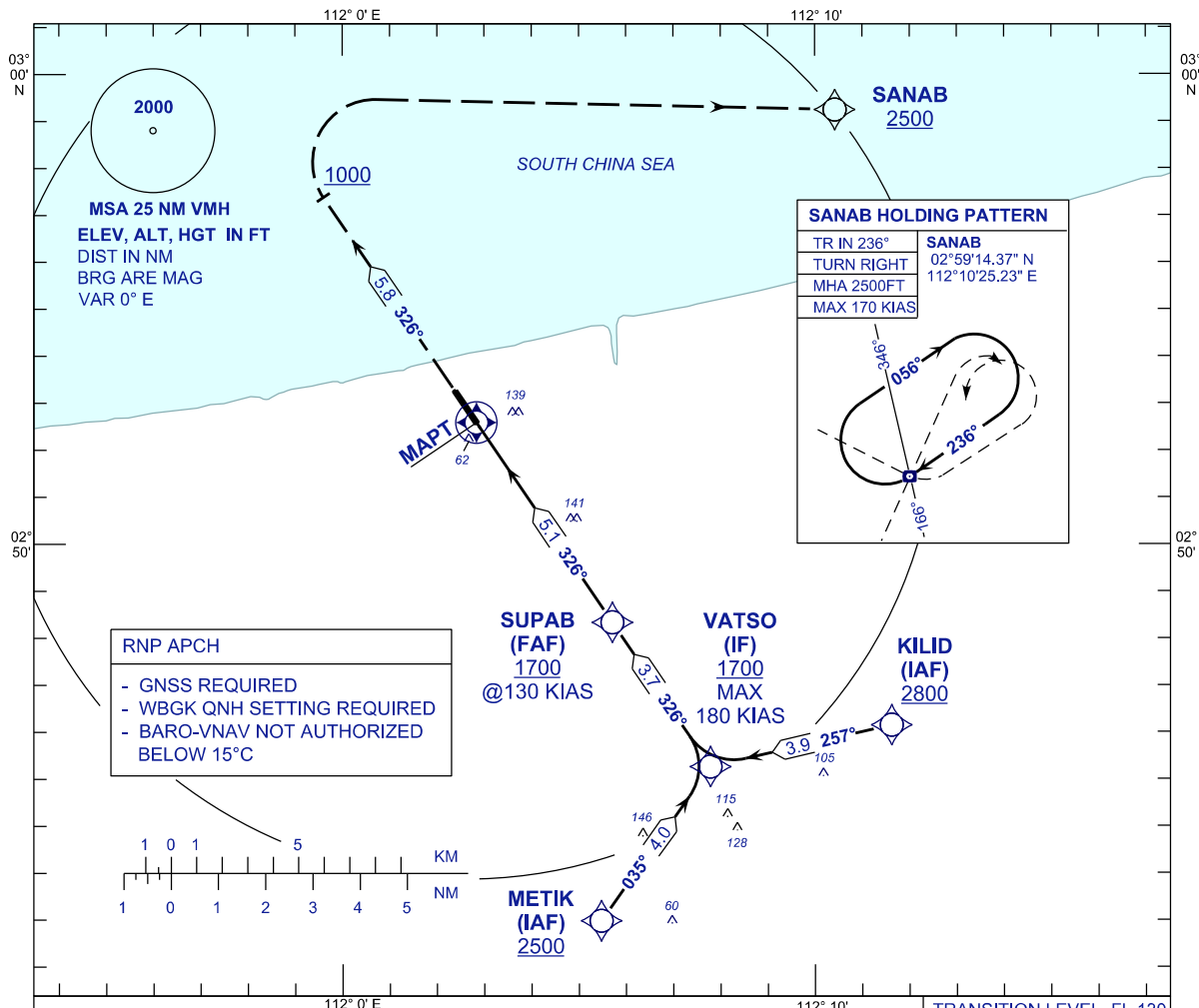
INSTRUMENT APPROACH CHART - ICAO

AERODROME ELEV 20 FT
 HEIGHTS RELATED TO
 THR RWY 33 - ELEV 20 FT

TWR	118.300
	118.425 (S)
SMC	118.075
ATIS	126.200

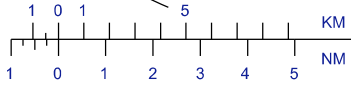
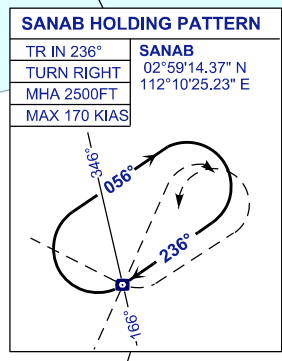
MUKAH/MUKAH(WBGK)

RNP Z RWY 33



RNP APCH

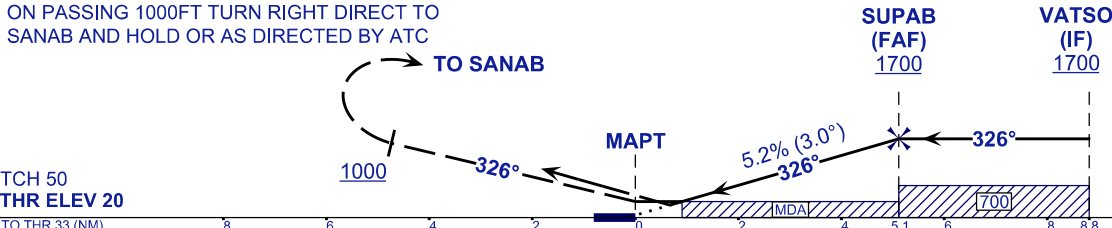
- GNSS REQUIRED
- WBGK QNH SETTING REQUIRED
- BARO-VNAV NOT AUTHORIZED BELOW 15°C



MISSED APPROACH

AT MAPT CLIMB TO 2500FT OR ABOVE ON TR 326°, ON PASSING 1000FT TURN RIGHT DIRECT TO SANAB AND HOLD OR AS DIRECTED BY ATC

TRANSITION LEVEL FL 130
 TRANSITION ALT 11 000



TCH 50
 THR ELEV 20

TO THR 33 (NM) 8 6 4 2 0 2 4 5.1 6 8 8.8

OCA /OCH	A	B
LNAV	390 (370)	
LNAV/VNAV	280 (260)	290 (270)
CIRCLING	550(530)/1.0	550(530)/1.5

DIST THR/RWY 33	5.1	4.0	3.0	2.0	1.0
ALTITUDE (FT)	1700	1344	1025	707	389

GROUND SPEED (GS)	KT	80	100	120	140	160	180
FAP - RWY33 (5.1 NM)	MIN:SEC	3:50	3:04	2:34	2:12	1:55	1:42
RATE OF DESCEND (318.4 FT/NM)	FT/MIN	420	530	640	740	850	960

CHANGES : SUPAB SPEED LIMIT
 VATSO SPEED LIMIT
 ADD MSA CENTER POINT
 AT PROFILE VIEW, READ KTS TO KT
 AT SANAB HOLDING PATTERN, READ IAS 170 KT
 TO MAX 170 KIAS