

**INSTRUMENT
APPROACH
CHART - ICAO**

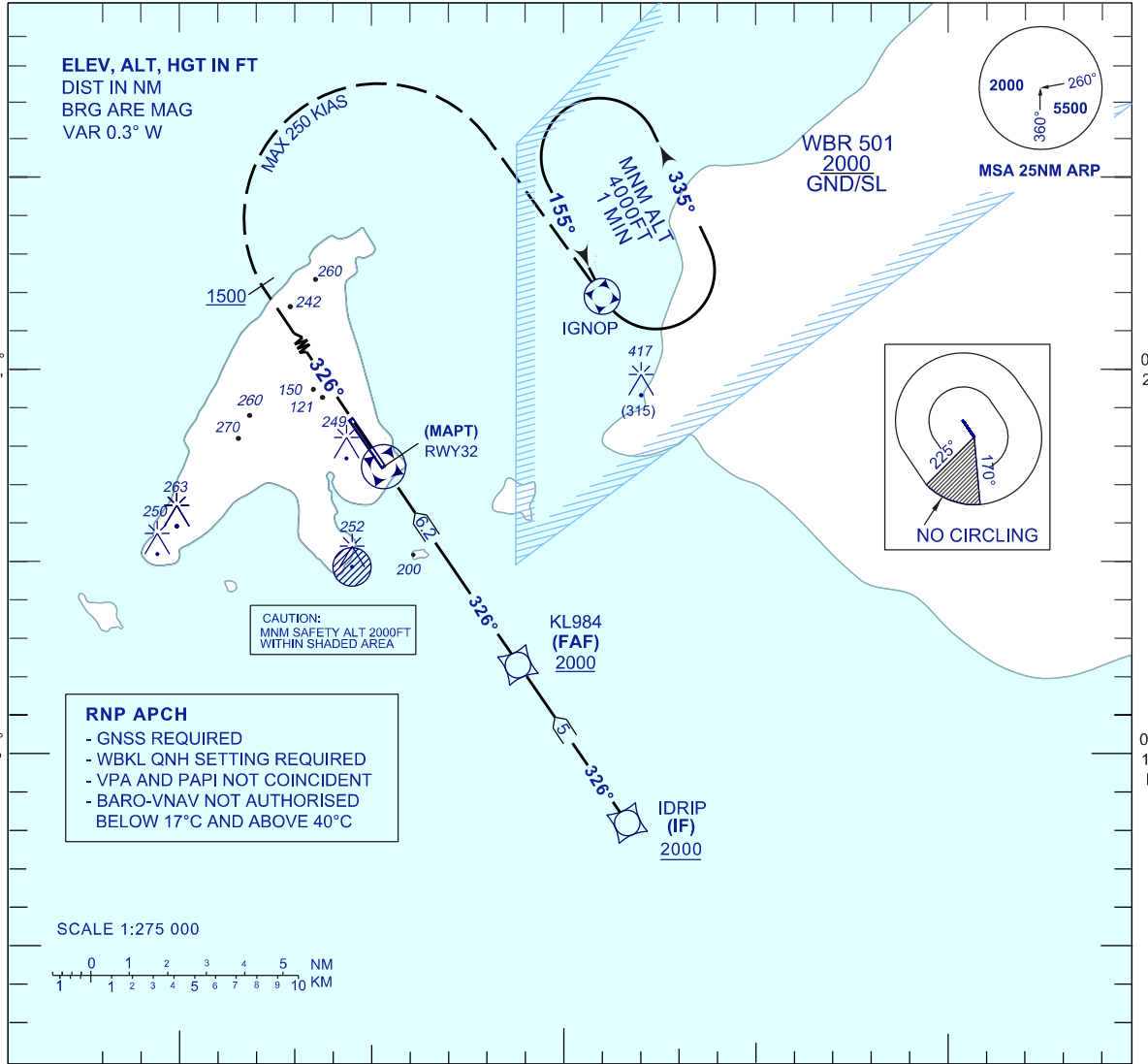
AERODROME ELEV 100 FT
HEIGHTS RELATED TO
THR RWY 32 - ELEV 95 FT

APP 119.7, 249.3
TWR 118.1, 238.1
SMC 118.35, 235.1
ATIS 126.85

LABUAN/LABUAN (WBKL)

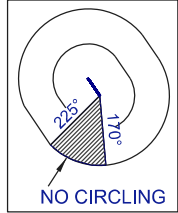
RNP Y RWY 32

ELEV, ALT, HGT IN FT
DIST IN NM
BRG ARE MAG
VAR 0.3° W



RNP APCH
- GNSS REQUIRED
- WBKL QNH SETTING REQUIRED
- VPA AND PAPI NOT COINCIDENT
- BARO-VNAV NOT AUTHORISED
BELOW 17°C AND ABOVE 40°C

CAUTION:
MNM SAFETY ALT 2000FT
WITHIN SHADED AREA

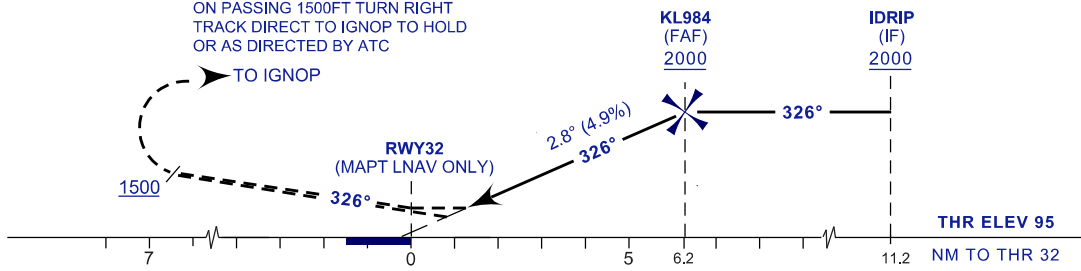


VPA 2.8°
TCH 50FT

MISSED APPROACH

CONTINUE TRACK 326° CLIMB 4000FT,
ON PASSING 1500FT TURN RIGHT
TRACK DIRECT TO IGNOP TO HOLD
OR AS DIRECTED BY ATC

TRANSITION LEVEL FL130
TRANSITION ALT 11000 FT



OCA (OCH)	A	B	C	D
LNAV	480 (385)			
LNAV / VNAV	370 (275)	380 (285)	450 (355)	460 (365)
CIRCLING*	700 (600)		900 (800)	

DIST THR/RWY14	NM	6.2	5.2	4.2	3.2	2.2	1.2
ALTITUDE	FT	2000	1690	1390	1090	790	500

GS	KT	80	100	120	140	160	180
FAF- RWY32 (6.2NM)	MIN:SEC	4:41	3:45	3:8	2:41	2:21	2:5
RATE OF DESCEND(305.2FT/NM)	FT/MIN	400	500	610	710	810	910