

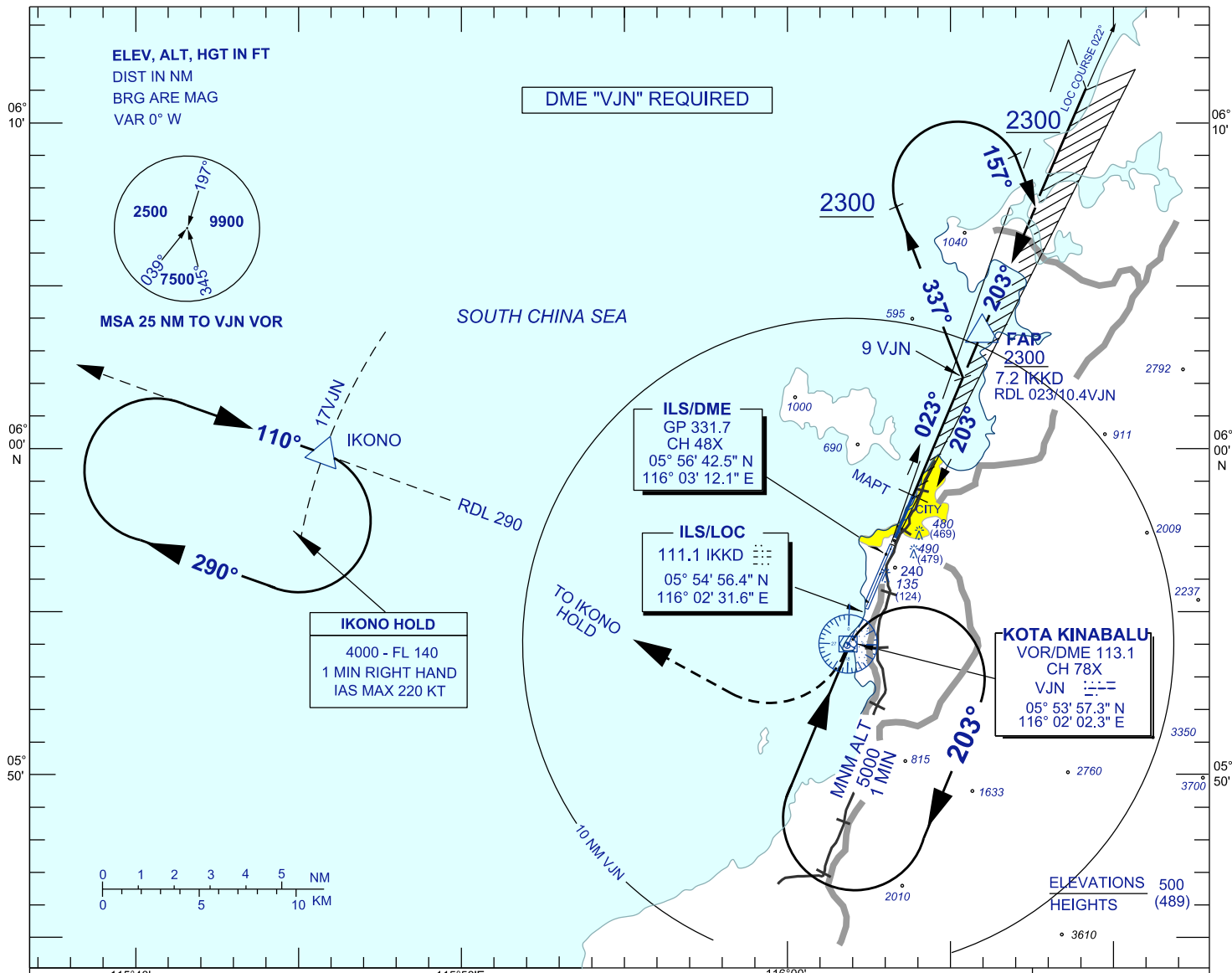
**INSTRUMENT  
APPROACH  
CHART - ICAO**

**AERODROME ELEV 14 FT**  
HEIGHTS RELATED TO  
THR RWY 20 - ELEV 11 FT

APP 119.1  
TWR 118.3  
GND 121.6  
ATIS 127.4

**KOTA KINABALU/  
KOTA KINABALU (WBKK)  
RWY 20**

ILS Y OR LOC Y



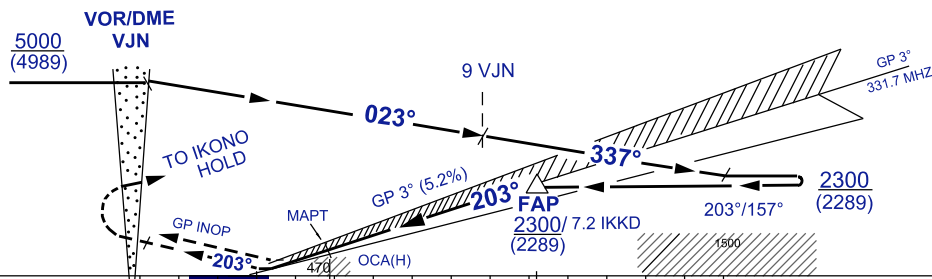
DIST BY DME (IKKD)	7.2	6.2	5.2	4.2	3.2	2.2	MAPT / 1.9
ALT 3° APCH PATH (FT)	2300(2289)	1982(1971)	1664(1653)	1346(1335)	1028(1017)	710(699)	610(599)

**MISSED APPROACH**

CLIMB ON TRACK 203°, ON PASSING VJN VOR,  
TURN RIGHT, TRACK TO IKONO HOLD,  
CLIMB TO 4000 FT, OR AS DIRECTED BY ATC

ILS RDH 54

THR ELEV 11



NM FROM DME IKKD	3	2	1	0	1	2	3	4	5	6	7	10	NM FROM DME IKKD
NM FROM DME VJN	5	0	2	5	9	10	15	NM FROM DME VJN					

OCA (H) FT		A	B	C	D
STRAIGHT-IN APPROACH	CAT 1	563(552)	575(564)	583(572)	594(583)
	LOC / DME	630(619) / 1.9 IKKD			
CIRCLING/MINM VIS(NM)		850(839) / 1.0	850(839) / 1.5	1300(1289) / 2.0	1600(1589) / 2.5

GROUND SPEED(KT)		70	90	120	150	180	
FAP - MAPT = 5.3 NM	MIN : SEC	4:32	3:32	2:39	2:07	1:48	
RATE OF DESCENT (3°)		FT / MIN	366	470	627	784	942