

# STANDARD ARRIVAL CHART INSTRUMENT (STAR) - ICAO

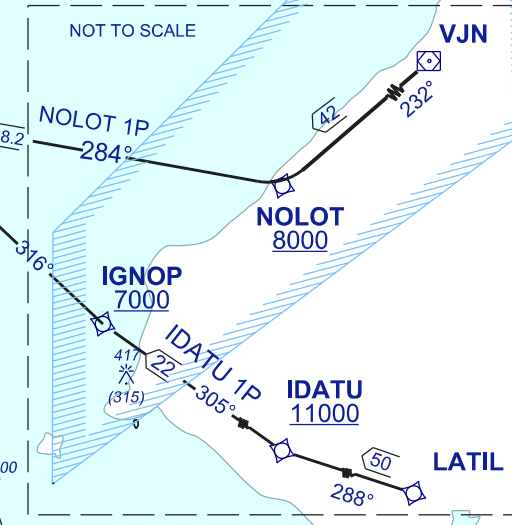
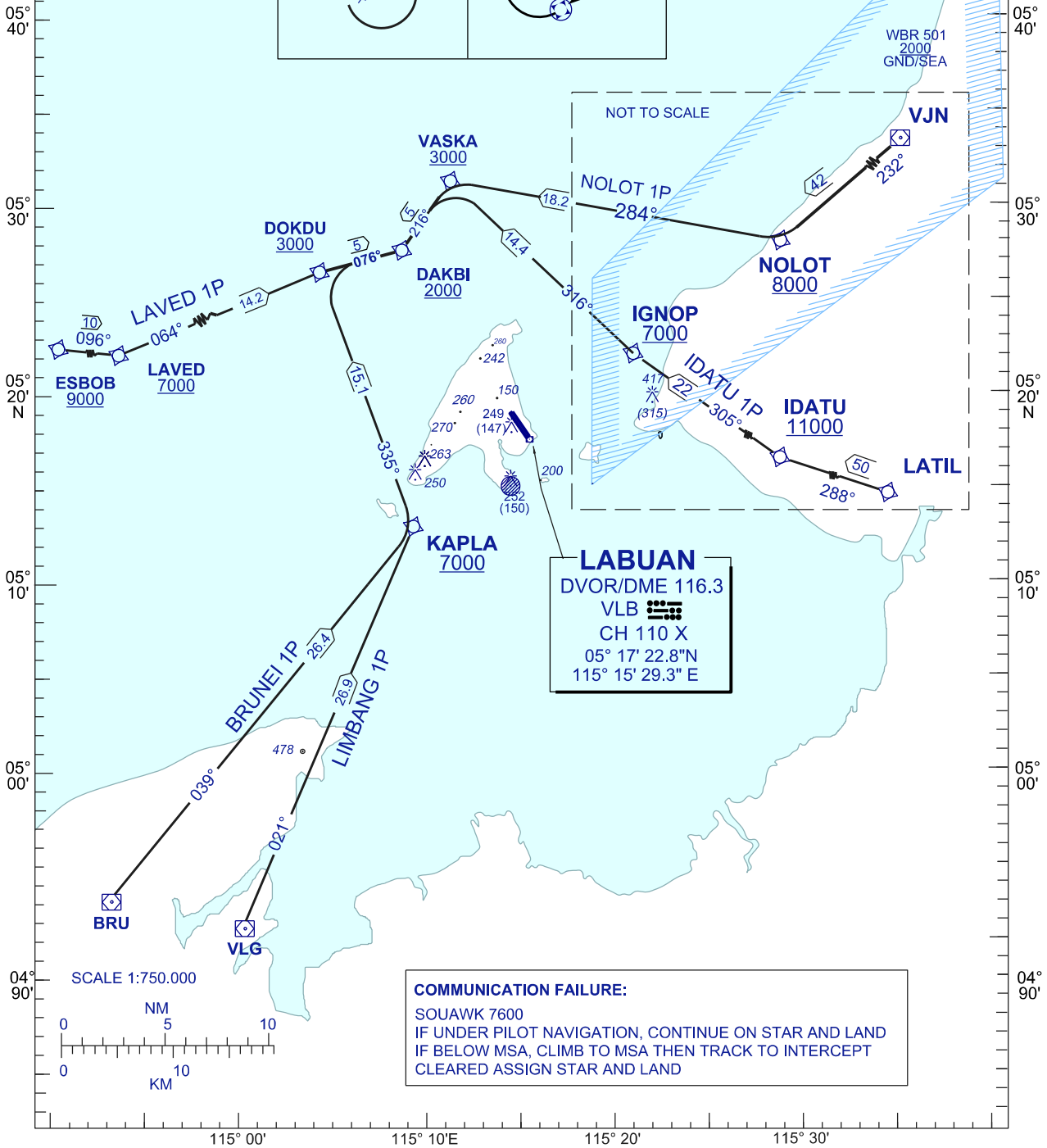
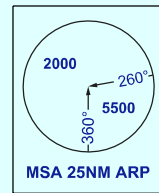
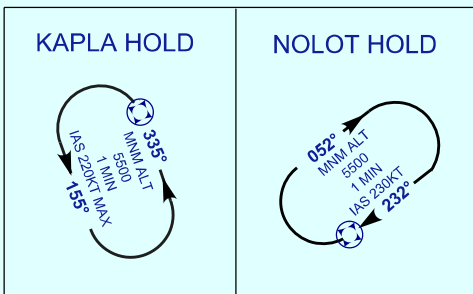
**LABUAN/LABUAN (WBK)**  
ARRIVAL RWY 14 (RNAV 1)

APP 119.7, 249.3  
TWR 118.1, 238.1  
SMC 118.35, 235.1  
ATIS 126.85

TRANSITION ALTITUDE  
11,000 FT

LAVED 1P  
BRUNEI 1P  
LIMBANG 1P  
IDATU 1P  
NOLOT 1P

ELEV, ALT, HGT IN FT  
DIST IN NM  
BRG ARE MAG  
VAR 0.3° W



**LABUAN**  
DVOR/DME 116.3  
VLB  
CH 110 X  
05° 17' 22.8" N  
115° 15' 29.3" E

**COMMUNICATION FAILURE:**  
SOUAWK 7600  
IF UNDER PILOT NAVIGATION, CONTINUE ON STAR AND LAND  
IF BELOW MSA, CLIMB TO MSA THEN TRACK TO INTERCEPT  
CLEARED ASSIGN STAR AND LAND