

**STANDARD ARRIVAL CHART
INSTRUMENT (STAR) - ICAO**

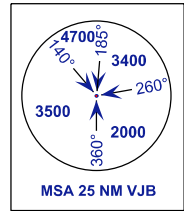
TRANSITION ALTITUDE
11000FT

APP 124.70 (P)
121.05 (S)
TWR 118.15
SMC 121.80
ATIS 123.05

**JOHOR BAHRU/SENAI
INTERNATIONAL AIRPORT (WMKJ)
RNAV RWY 16**

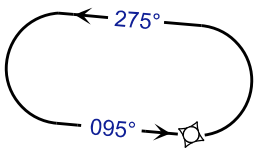
EMTUV 1E OMKOM 1E
PIMOK 1E ADLOV 1E

ELEV, ALT, HGT IN FT
DIST IN NM
BRG ARE MAG
VAR 0° E



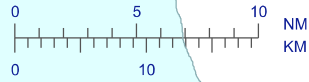
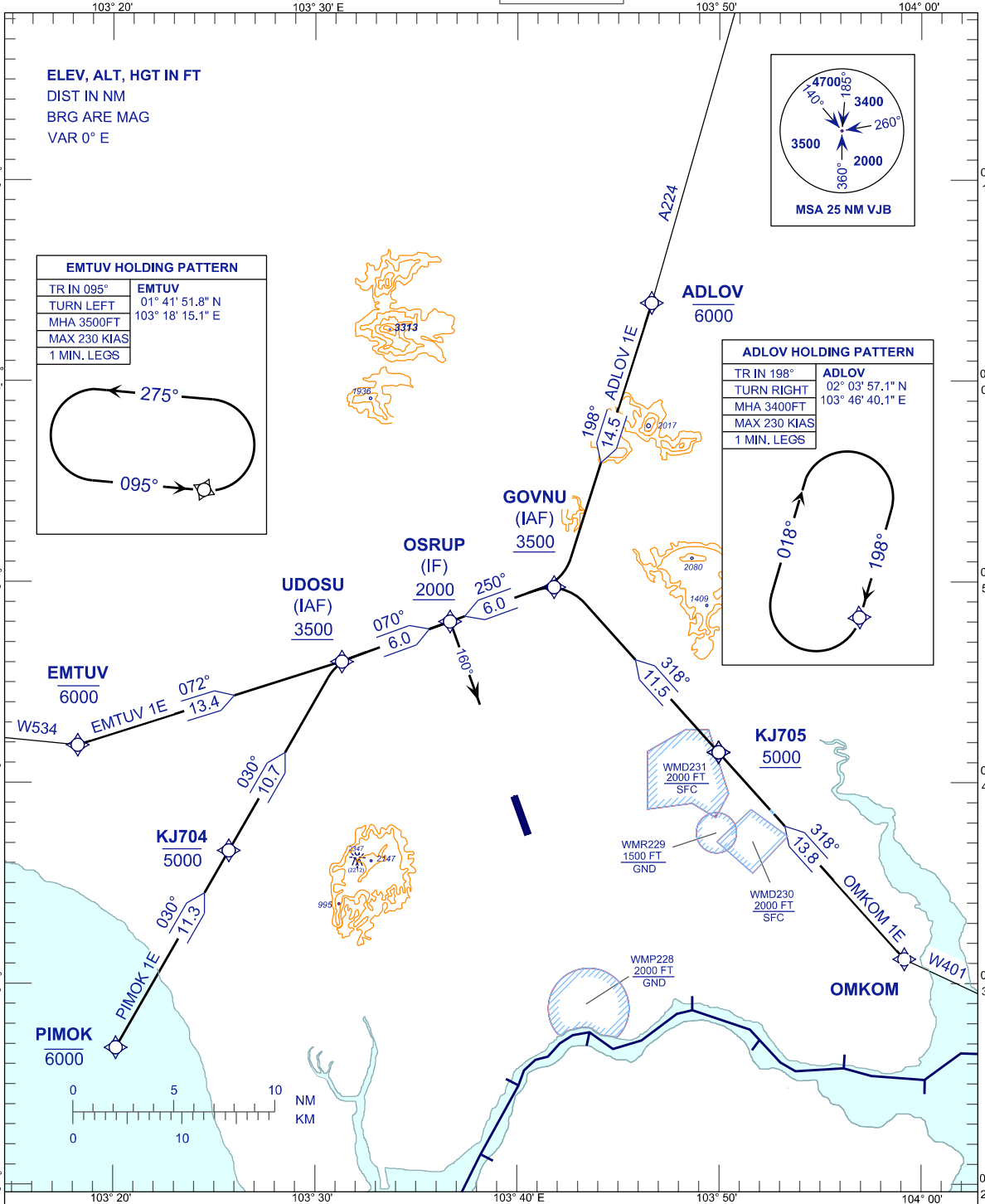
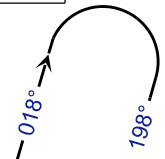
EMTUV HOLDING PATTERN

TR IN 095°	EMTUV
TURN LEFT	01° 41' 51.8" N
MHA 3500FT	103° 18' 15.1" E
MAX 230 KIAS	
1 MIN. LEGS	



ADLOV HOLDING PATTERN

TR IN 198°	ADLOV
TURN RIGHT	02° 03' 57.1" N
MHA 3400FT	103° 46' 40.1" E
MAX 230 KIAS	
1 MIN. LEGS	



COMMUNICATION FAILURE:

- SET TRANSPONDER TO MODE A/C CODE 7600.
- IF UNDER PILOT NAVIGATION, MAINTAIN ASSIGNED LEVEL FOR 3 MINUTES. IF NO ONWARD CLEARANCE IS RECEIVED, SUBSEQUENTLY CLIMB/DESCENT TO COMPLY WITH STAR AND LAND.
- IF UNDER RADAR VECTORED, MAINTAIN VECTOR FOR 1 MINUTES, IF BELOW MSA CLIMB TO MSA, THEN TRACK TO INTERCEPT CLEARED OR PREVIOUSLY ASSIGNED STAR AND LAND.

CHANGES : CATIS to ATIS IN FREQUENCY BOX,
TURN SPEED IAS 230KT to MAX 230KIAS.