

**STANDARD DEPARTURE CHART  
INSTRUMENT (SID) - ICAO**

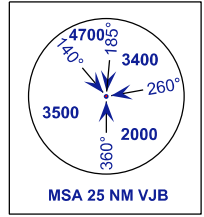
**TRANSITION ALTITUDE**  
11000FT

APP 124.70 (P)  
121.05 (S)  
TWR 118.15  
SMC 121.80  
ATIS 123.05

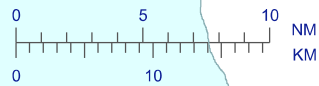
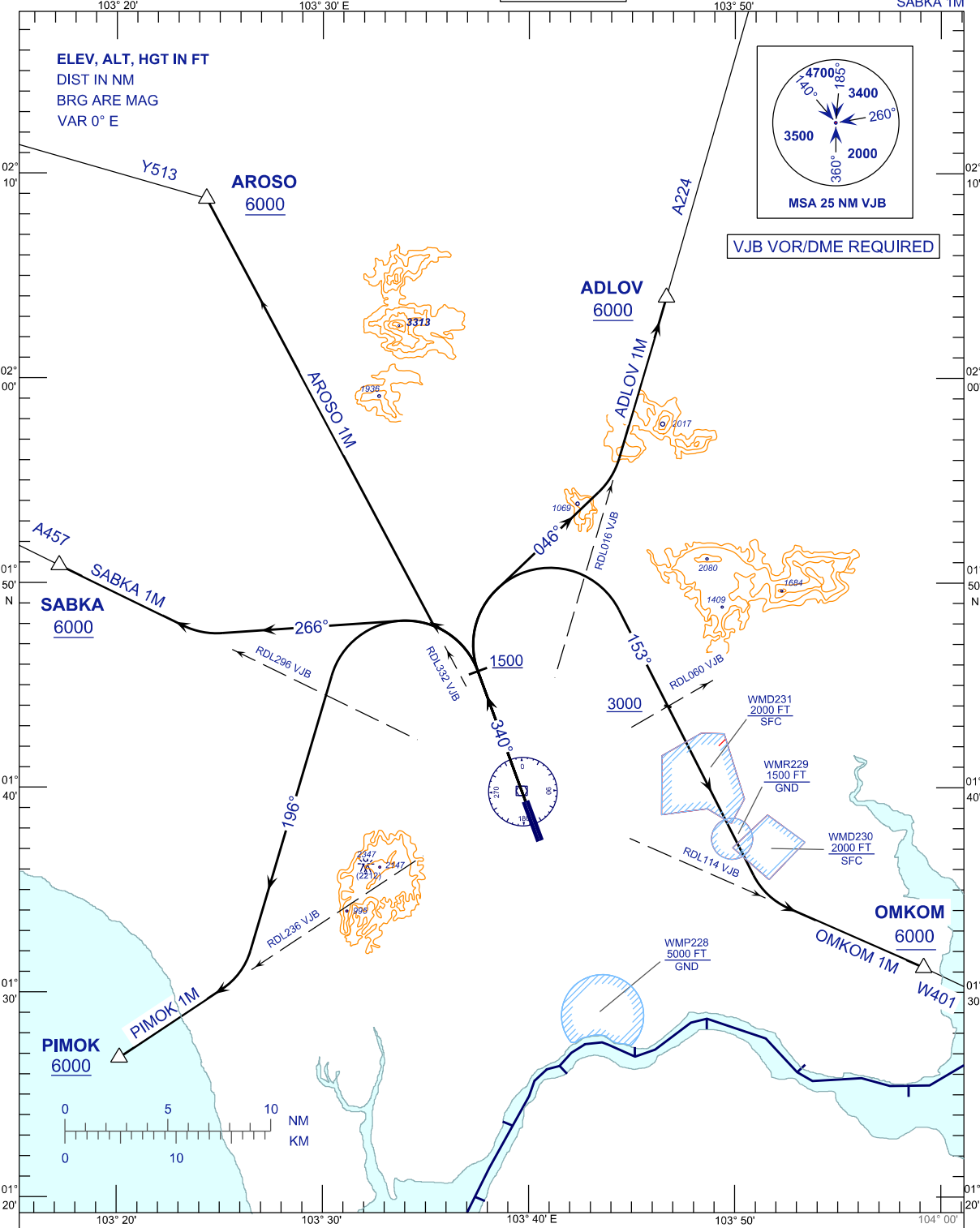
**JOHOR BAHRU/SENAI  
INTERNATIONAL AIRPORT (WMKJ)  
RWY 34**

AROS 1M ADLOV 1M  
OMKOM 1M PIMOK 1M  
SABKA 1M

ELEV, ALT, HGT IN FT  
DIST IN NM  
BRG ARE MAG  
VAR 0° E



VJB VOR/DME REQUIRED



**COMMUNICATION FAILURE:**

- SET TRANSPONDER TO MODE A/C CODE 7600.
- IF UNDER PILOT NAVIGATION, MAINTAIN ASSIGNED LEVEL FOR 3 MINUTES. IF NO ONWARD CLEARANCE IS RECEIVED, SUBSEQUENTLY CLIMB TO COMPLY WITH SID.
- IF UNDER RADAR VECTORED, MAINTAIN VECTOR FOR 2 MINUTES, IF BELOW MSA CLIMB TO MSA, THEN TRACK TO INTERCEPT CLEARED OR PREVIOUSLY ASSIGNED TO DESTINATION.