

**STANDARD DEPARTURE CHART
INSTRUMENT (SID) - ICAO**

SANDAKAN/SANDAKAN (WBKS)

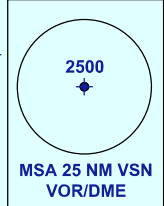
TRANSITION ALTITUDE
11000FT

APP 123.20
TWR 122.05
SMC 121.90
ATIS 128.20

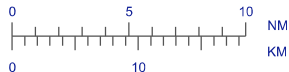
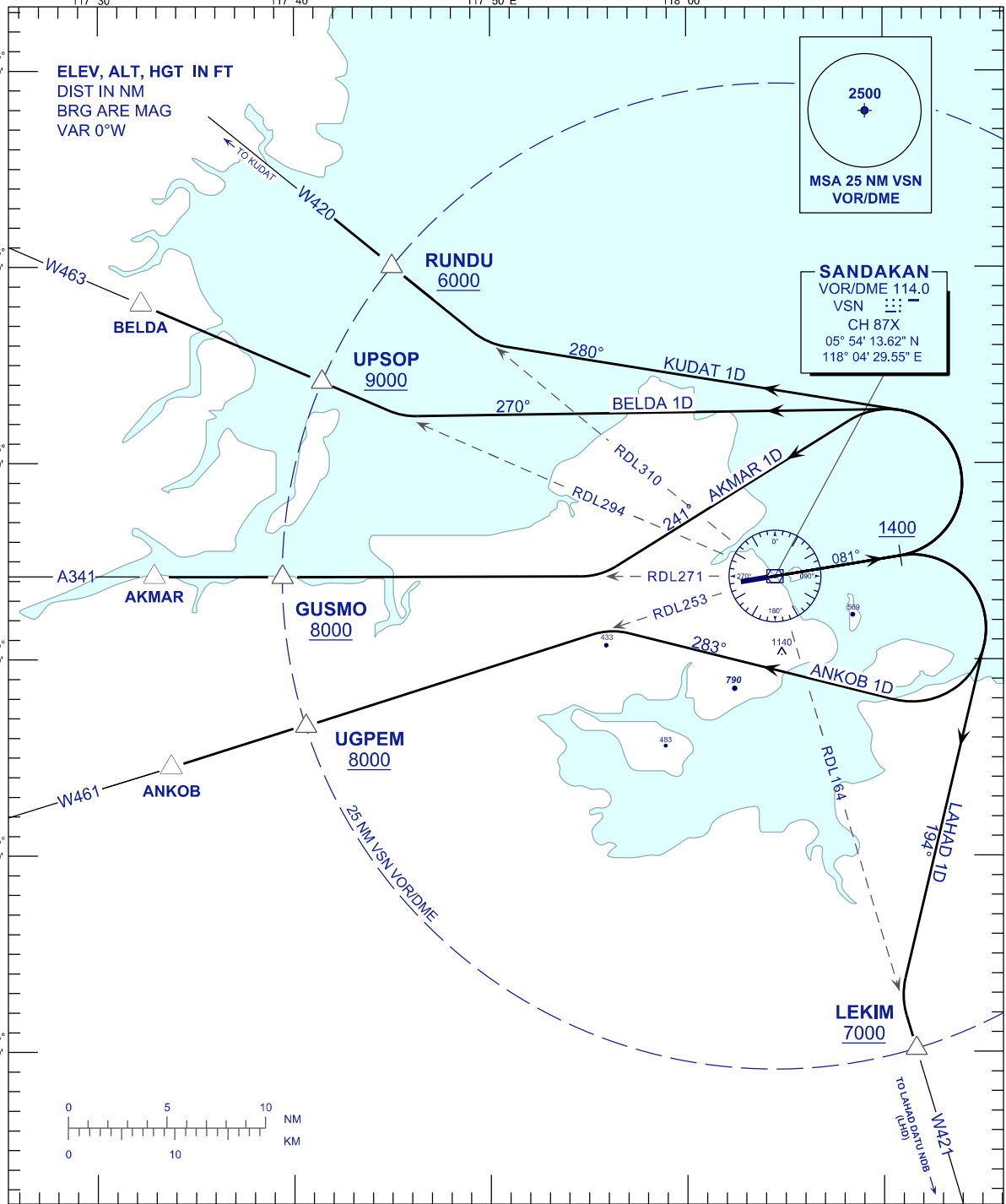
KUDAT 1D
AKMAR 1D

RWY 08
BELDA 1D
ANKOB 1D
LAHAD 1D

ELEV, ALT, HGT IN FT
DIST IN NM
BRG ARE MAG
VAR 0°W



SANDAKAN
VOR/DME 114.0
VSN CH 87X
05° 54' 13.62" N
118° 04' 29.55" E



COMMUNICATION FAILURE:

- SET TRANSPONDER TO MODE A/C CODE 7600.
- IF UNDER PILOT NAVIGATION, MAINTAIN ASSIGNED LEVEL FOR 3 MINUTES. IF NO ONWARD CLEARANCE IS RECEIVED, SUBSEQUENLY CLIMB TO COMPLY WITH SID.
- IF UNDER RADAR VECTORED, MAINTAIN VECTOR FOR 2 MINUTES, IF BELOW MSA CLIMB TO MSA, THEN TRACK TO INTERCEPT CLEARED OR PREVIOUSLY ASSIGNED SID TO DESTINATION.