

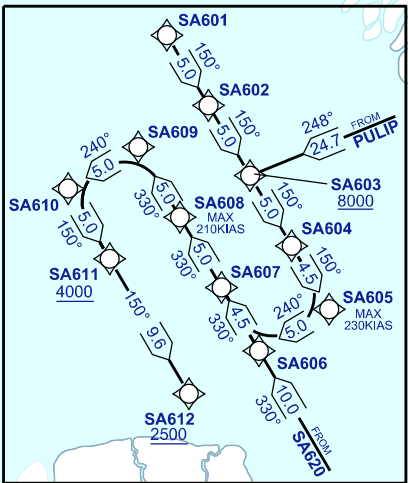
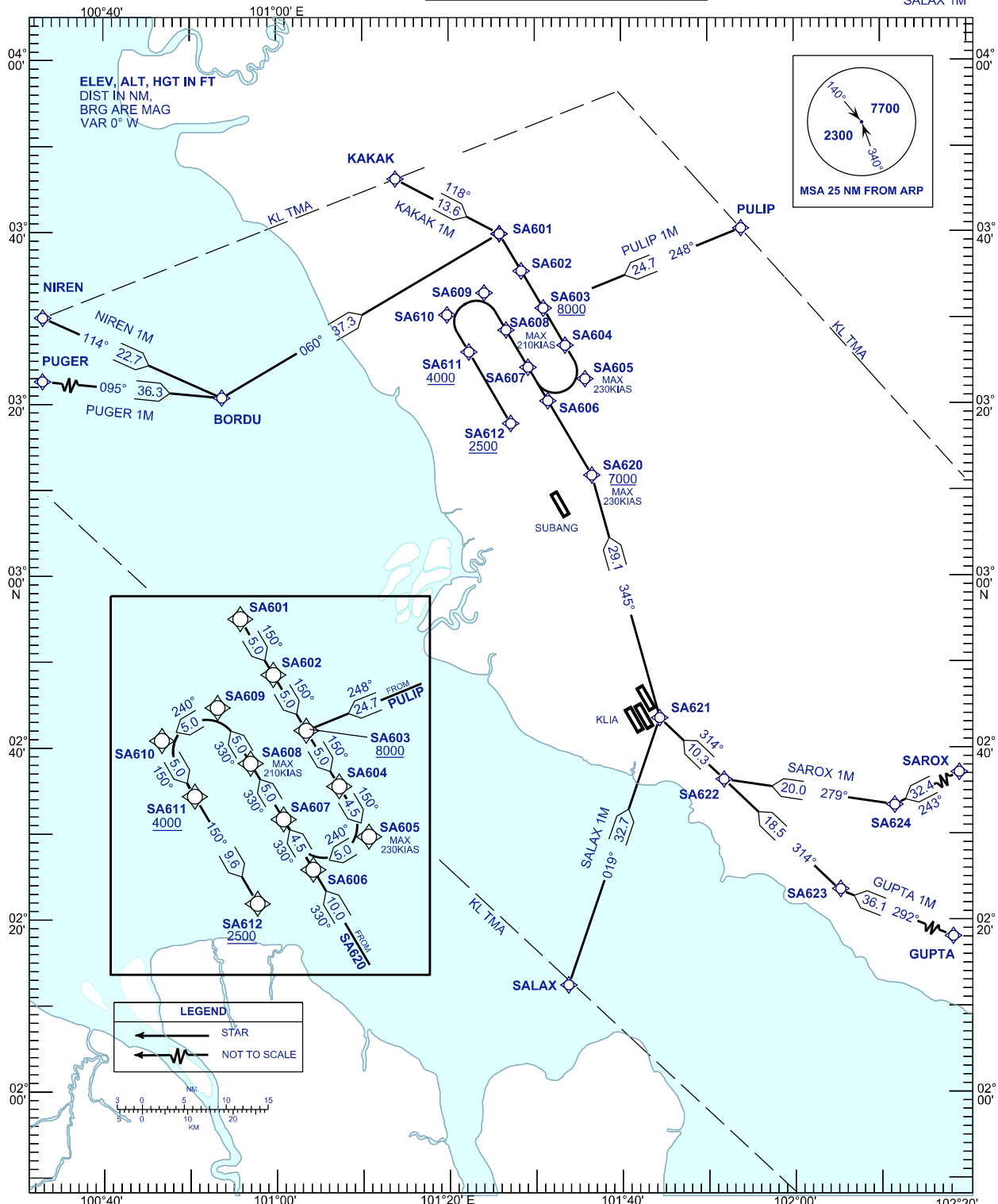
# STANDARD ARRIVAL CHART INSTRUMENT (STAR) - ICAO

TRANSITION ALTITUDE  
11000 FT

APP	118.650	ACD	120.450
	124.200	SMC	121.900
	135.25	TWR	118.200
FIS	126.100	ATIS	127.6

## SUBANG/SULTAN ABDUL AZIZ SHAH (WMSA) RNAV 1 (GNSS) RWY 15

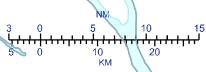
PUGER 1M NIREN 1M KAKAK 1M  
PULIP 1M SAROX 1M GUPTA 1M  
SALAX 1M



**LEGEND**

← STAR

⋯ NOT TO SCALE



CHANGES: EXISTING CHART  
CE TO SA612