

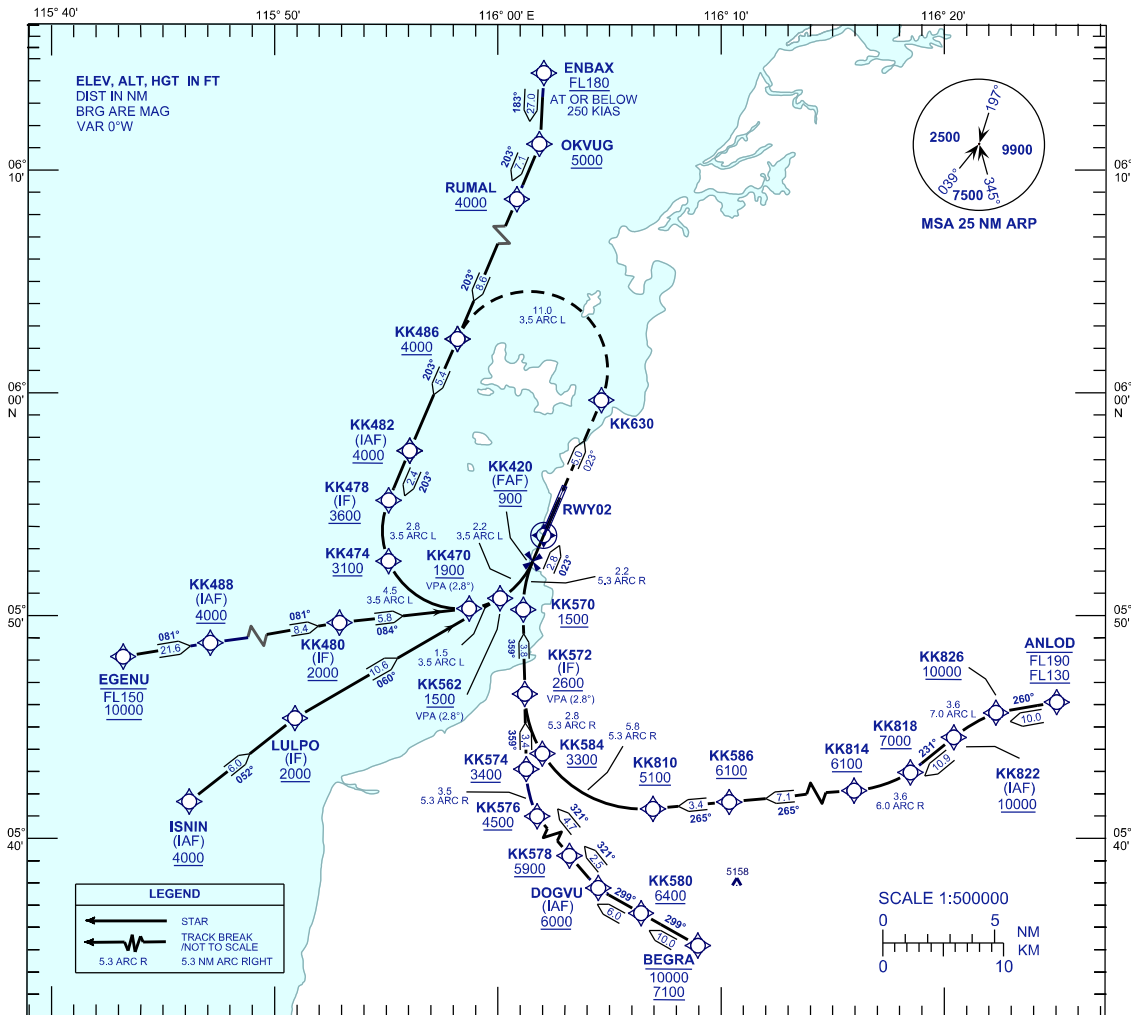
INSTRUMENT APPROACH CHART - ICAO

AERODROME ELEV 14 FT
HEIGHT RELATED TO
THR RWY 02 - ELEV 14 FT

| | |
|------|-------|
| APP | 119.1 |
| TWR | 118.3 |
| GND | 121.6 |
| ATIS | 127.4 |

KOTA KINABALU/ KOTA KINABALU (WBKK)

RNP Z RWY 02 (AR)



VPA 2.8°
RDH 58FT

MISSED APPROACH

CLIMB TO 4000 FT VIA THE RNP MISSED APPROACH TRACK TO KK482 OR AS DIRECTED BY ATC.

TRANSITION LEVEL FL130
TRANSITION ALT 11000 FT

VSS PENETRATIONS 1,200 M
PRIOR TO THR.

KK420
(FAF)
900

RWY02

THR ELEV 14
NM TO THR 02

| | | |
|----------------------------|-----------|---|
| STRAIGHT-IN APPROACH | OCA (OCH) | |
| CATEGORY OF AIRCRAFT | C | D |
| RNP 0.3 | 525 (511) | |
| CIRCLING AND ALTERNATE N/A | | |

| | | | | | | |
|--------------------------------------|-----|-----|-----|-----|-----|-----|
| GROUND SPEED - KT | 70 | 90 | 100 | 120 | 140 | 160 |
| RATE OF DESCENT (2.8°) (FEET/MIN) | 347 | 446 | 495 | 594 | 693 | 792 |

| | | | |
|----------------------------|-----|-----|-----|
| DISTANCE TO THRESHOLD (NM) | 2.8 | 2 | 1 |
| ALTITUDE (FEET) | 900 | 670 | 370 |

1. AUTHORIZATION REQUIRED

2. GNSS REQUIRED

3. RF REQUIRED

- APPROACH NOT AUTHORIZED WHEN AIRPORT TEMPERATURE BELOW 17°C OR ABOVE 40°C.
- WBKK ALTIMETER SETTING REQUIRED.
- CLIMB GRADIENT 2.6% REQUIRED TO REACH KK482 AT 4000 FT.
- RNP 1.0 REQUIRED FROM KK580 TO DOGVU.
- RNP 0.3 REQUIRED FROM IAF'S TO FAF

CHANGES : CHART IDENTIFICATION