

**INSTRUMENT
APPROACH
CHART - ICAO**

AERODROME ELEV 14 FT
HEIGHTS RELATED TO
THR RWY 20 - ELEV 11 FT

APP 119.10
TWR 118.30
GND 121.60
ATIS 127.40

**KOTA KINABALU/
KOTA KINABALU (WBKK)**

RNP Y RWY 20

115°50'

116°00'E

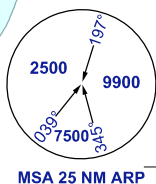
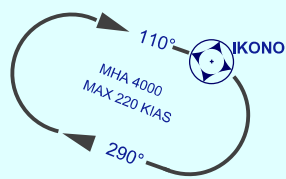
116°10'

ELEV, ALT, HGT IN FT
DIST IN NM
BRG ARE MAG
VAR 0° W

RNP APCH

- GNSS REQUIRED
- WBKK QNH SETTING REQUIRED
- VPA AND PAPI NOT COINCIDENT
- BARO-VNAV NOT AUTHORISED BELOW 17°C AND ABOVE 40°C

IKONO HOLDING PATTERN



06° 10'
06° 00' N
05° 50'

06° 10'
06° 00' N
05° 50'

SOUTH CHINA SEA

SCALE 1:250,000



115°50'

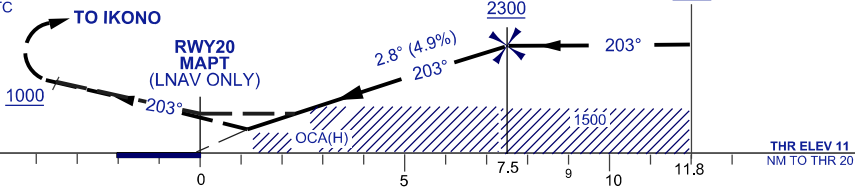
116°00'E

116°10'

TRANSITION ALT 11000

MISSED APPROACH

CONTINUE ON TRACK 203° CLIMBING TO 4000FT,
ON PASSING 1000FT TURN RIGHT
TRACK DIRECT TO IKONO
TO HOLD OR AS DIRECTED BY ATC



OCA (OCH)	A	B	C	D
LNAV /VNAV	620(609)	633(622)	641(630)	651(640)
LNAV	710 (699)			
CIRCLING	850(839)		1600(1589)	

DIST THR/ RWY20	NM	6.5	5.5	4.5	3.5	2.5
ALTITUDE	FT	1990	1700	1400	1100	810

GS	KT	80	100	120	140	160
FAF - RWY20 (7.5NM)	MIN:SEC	5:39	4:32	3:46	3:14	2:50
RATE OF DESCEND (303.8FT/NM)	FT/MIN	400	500	600	700	810

CHANGES: CHART IDENTIFICATION
ADD VPA INFORMATION
RDH TO TCH INFORMATION