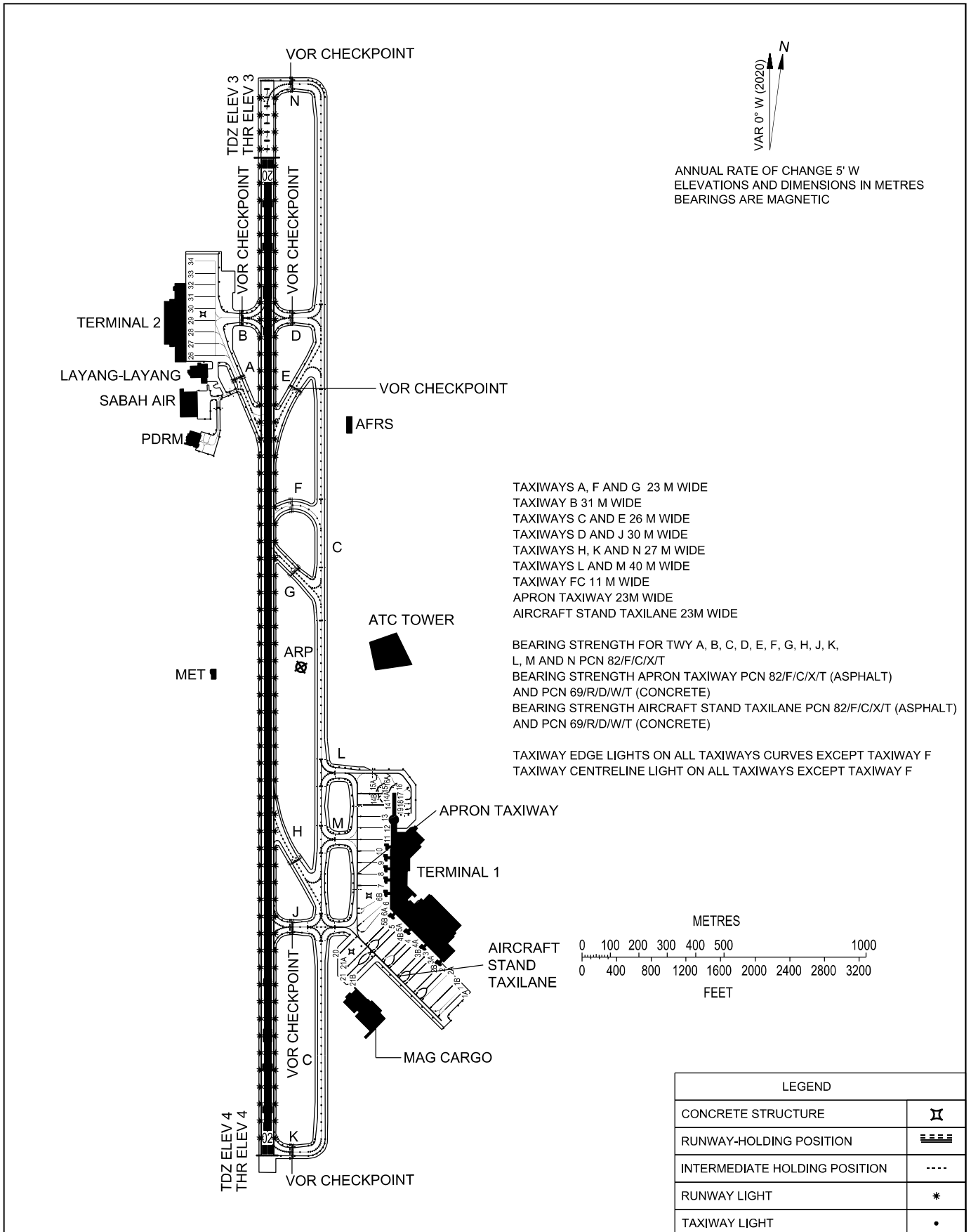


**AERODROME GROUND
MOVEMENT CHART - ICAO**

APRON ELEV
3 M

TWR 118.3
SMC 121.6
ATIS 127.4

**KOTA KINABALU/KOTA KINABALU
INTERNATIONAL AIRPORT**

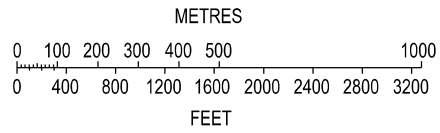


ANNUAL RATE OF CHANGE 5' W
ELEVATIONS AND DIMENSIONS IN METRES
BEARINGS ARE MAGNETIC

- TAXIWAYS A, F AND G 23 M WIDE
- TAXIWAY B 31 M WIDE
- TAXIWAYS C AND E 26 M WIDE
- TAXIWAYS D AND J 30 M WIDE
- TAXIWAYS H, K AND N 27 M WIDE
- TAXIWAYS L AND M 40 M WIDE
- TAXIWAY FC 11 M WIDE
- APRON TAXIWAY 23M WIDE
- AIRCRAFT STAND TAXILANE 23M WIDE

BEARING STRENGTH FOR TWY A, B, C, D, E, F, G, H, J, K,
L, M AND N PCN 82/F/C/X/T
BEARING STRENGTH APRON TAXIWAY PCN 82/F/C/X/T (ASPHALT)
AND PCN 69/R/D/W/T (CONCRETE)
BEARING STRENGTH AIRCRAFT STAND TAXILANE PCN 82/F/C/X/T (ASPHALT)
AND PCN 69/R/D/W/T (CONCRETE)

TAXIWAY EDGE LIGHTS ON ALL TAXIWAYS CURVES EXCEPT TAXIWAY F
TAXIWAY CENTRELINE LIGHT ON ALL TAXIWAYS EXCEPT TAXIWAY F



LEGEND	
CONCRETE STRUCTURE	▣
RUNWAY-HOLDING POSITION	≡≡≡
INTERMEDIATE HOLDING POSITION	----
RUNWAY LIGHT	*
TAXIWAY LIGHT	•

CHANGES : NEW PARKING APRON
ADD INTERMEDIATE HOLDING POSITION AT LEGEND