

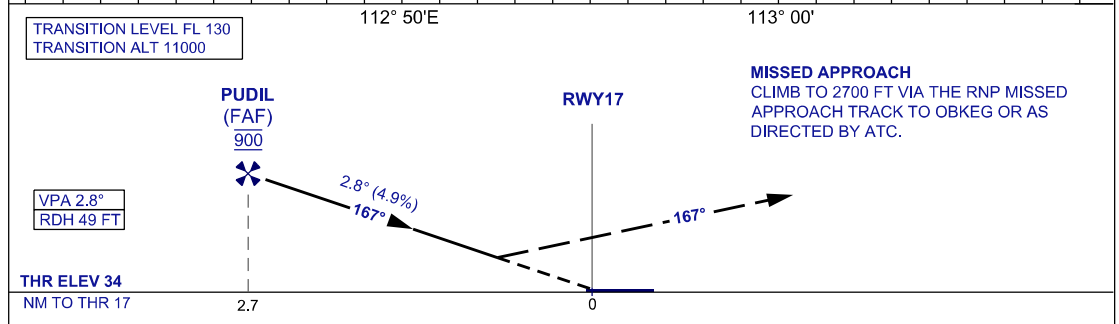
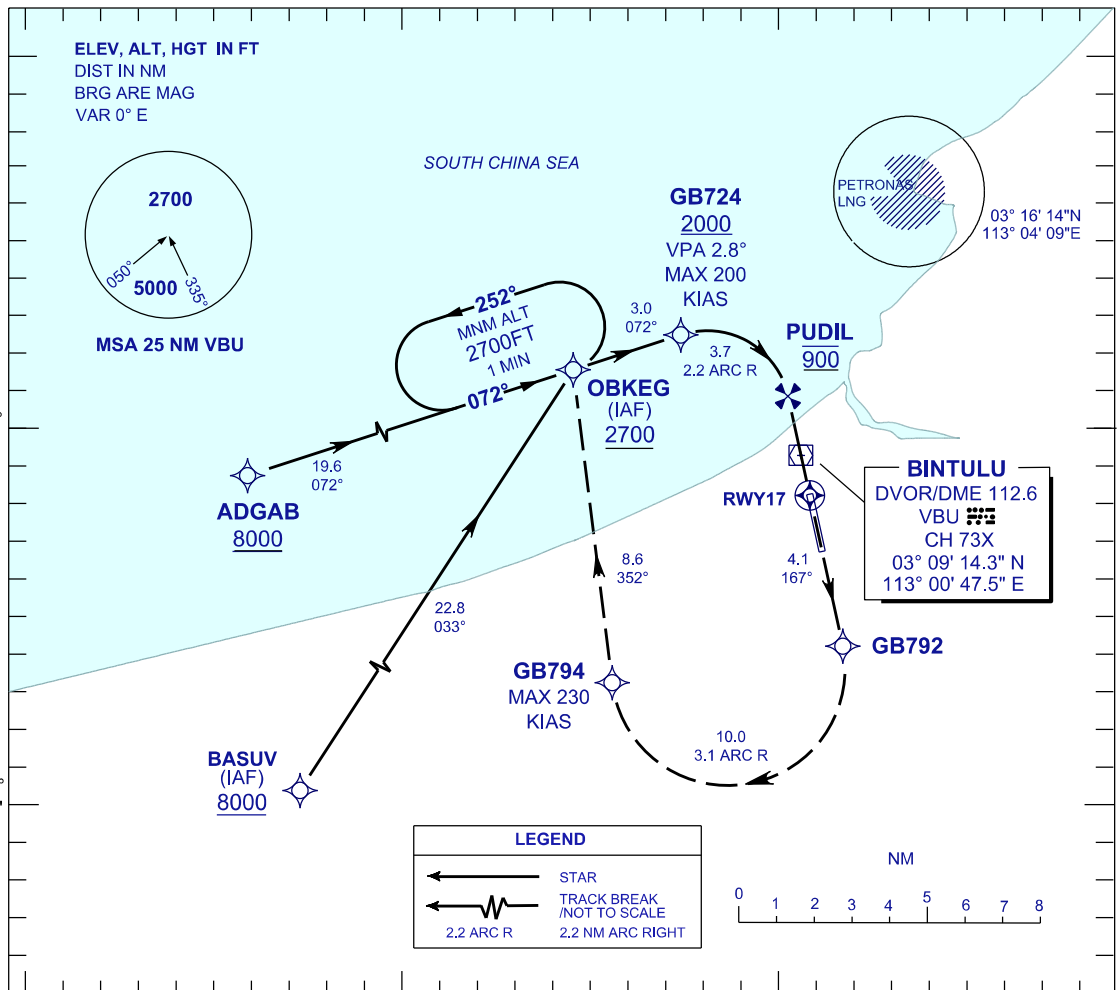
**INSTRUMENT
APPROACH
CHART - ICAO**

**AERODROME ELEV 75 FT
HEIGHTS RELATED TO
THR RWY 17 - ELEV 34 FT**

TWR / APP 122.30 (P)
119.25 (S)
121.5
SMC 121.8
ATIS 127.8

BINTULU/BINTULU (WBGB)

RNP Z RWY 17 (AR)



OCA/H		GROUND SPEED - KT						
ACFT CAT.	C	D	70	90	100	120	140	160
RNP 0.3	598 (564) / 2.4 KM		RATE OF DESCENT (2.8°) (FT/MIN)					
			347	446	495	594	693	792
			DISTANCE TO THRESHOLD (NM)			2.7	2	1
			ALTITUDE (FT)			900	670	370

- AUTHORIZATION REQUIRED**
- GNSS REQUIRED**
- RF REQUIRED**
- APPROACH NOT AUTHORIZED WHEN AIRPORT TEMPERATURE BELOW 20°C OR ABOVE 36°C
- WBGB ALTIMETER SETTING REQUIRED.
- PAPI AND VERTICAL PATH ANGLE NOT COINCIDENT
- PROCEDURE REQUIRES RNP 0.3 FROM IAFS TO RWY