

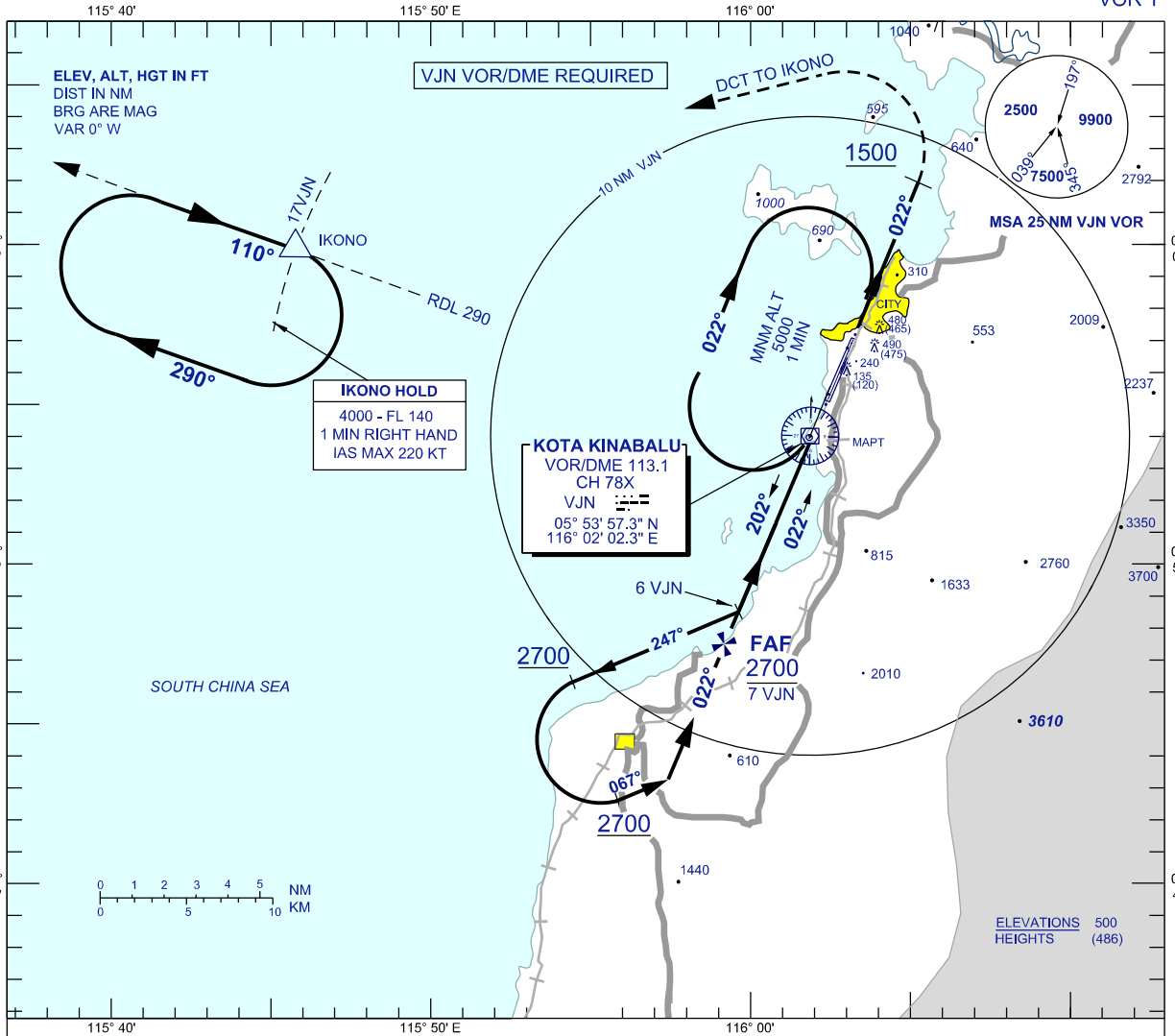
INSTRUMENT APPROACH CHART - ICAO

AERODROME ELEV 14 FT
HEIGHTS RELATED TO
THR RWY 02 - ELEV 14 FT

APP 119.1
TWR 118.3
GND 121.6
ATIS 127.4

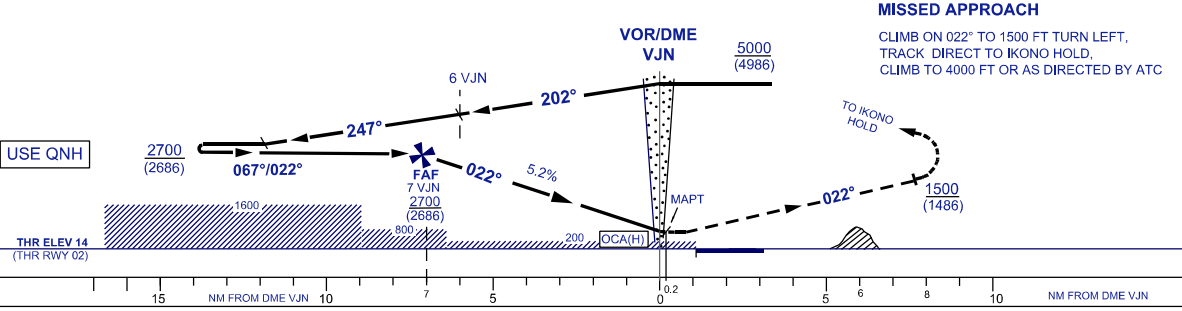
**KOTA KINABALU/
KOTA KINABALU (WBKK)
RWY 02**

VOR Y



DIST BY DME (NM)	7.0	6.0	5.0	4.0	3.0	2.0	1.0	VJN VOR	MAPT / -0.2
ALT 3° APCH PATH (FT)	2700(2686)	2382(2368)	2064(2050)	1746(1732)	1428(1414)	1110(1096)	792(778)	474(460)	405(391)

TRANSITION LEVEL FL 130
TRANSITION ALT 11000



MISSED APPROACH
CLIMB ON 022° TO 1500 FT TURN LEFT,
TRACK DIRECT TO IKONO HOLD,
CLIMB TO 4000 FT OR AS DIRECTED BY ATC

OCA (H) FT	A	B	C	D
STRAIGHT-IN APPROACH	405(391) / - 0.2 VJN			
CIRCLING/MNM VIS(NM)	850(836) / 1.0	850(836) / 1.5	1300(1286) / 2.0	1600(1586) / 2.5

GROUND SPEED(KT)	70	90	120	150	180	
FAP - MAPT = 7.2NM	MIN : SEC	6:09	4:48	3:36	2:53	2:24
RATE OF DESCENT (3°)	FT / MIN	375	482	643	804	964

CHANGES : REMOVE NDB JSL.